

NORFOLK, VIRGINIA

ILS or LOC RWY 10

LOC I-NGU 108.95	APCH CRS 101°	Rwy Idg TDZE Arprt Elev 8071 14 15	[USN]	NORFOLK NS (CHAMBERS FLD) (KNGU)
----------------------------	-------------------------	------------------------------------------------------------------------	-------	----------------------------------

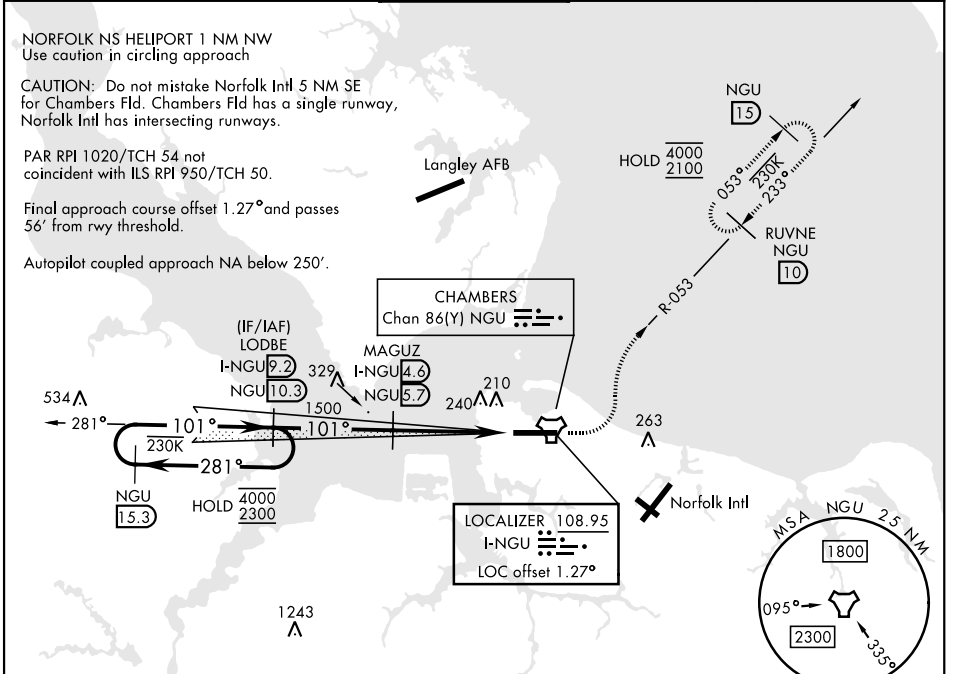
DME, TACAN required.

* When ALS inop, increase vis to ¾ mile.
 ** When ALS inop, increase CAT AB vis to 1 mile, CAT CDE vis to 1¾ miles.
 *** Circling not authorized S of Rwy 10-28.

ALSF-2

MISSED APPROACH: Climb to 500, then climbing left turn to 2100, intercept NGU TACAN R-053 to RUVNE/10 DME and hold.

ATIS 118.425 338.225	APP CON 118.9 273.475	CHAMBERS TOWER 124.3 379.15	GND CON 121.8 370.85	ASR/PAR
--------------------------------	---------------------------------	---------------------------------------	--------------------------------	---------



EMERG SAFE ALT 100 NM 6100

VGSI and ILS glidepath not coincident (VGSI Angle 3.00/TCH 35).

500
 2100
 NGU R-053

ELEV 15 TDZE 14

LODBE
 I-NGU 9.2
 NGU 10.3
 MAGUZ
 I-NGU 4.6
 NGU 5.7
 I-NGU 1.3
 NGU 2.5
 OTPEE
 I-NGU 0.5
 NGU 1.6
 GS 3.00°
 TCH 50
 4.1 NM
 0.4 NM

CATEGORY	A	B	C	D	E
S-ILS 10 *	264-½		250	(300-½)	
S-LOC 10 **	460-½	446 (500-½)	460-¾	446 (500-¾)	
CIRCLING ***	520-1 505 (600-1)	540-1 525 (600-1)	540-1½ 525 (600-1½)	600-2	585 (600-2)

HIRL Rwy 10-28
 REIL Rwy 10, 28
 TDZL/RCLS Rwy 10-28

NORFOLK, VIRGINIA 36°56'N-76°17'W NORFOLK NS (CHAMBERS FLD) (KNGU)

Amdt 3 22JAN26

ILS or LOC RWY 10

NE-3, 14 MAY 2026 to 11 JUN 2026

NE-3, 14 MAY 2026 to 11 JUN 2026