

# RNAV (GPS) RWY 10

WAAS Chan <b>44826</b> <b>W10A</b>	APCH CRS <b>100°</b>	Rwy Idg TDZE Arpt Elev	<b>8071</b> <b>14</b> <b>15</b>
--	-------------------------	------------------------------	---------------------------------------

[USN]

NORFOLK NS (CHAMBERS FLD) (KNGU)

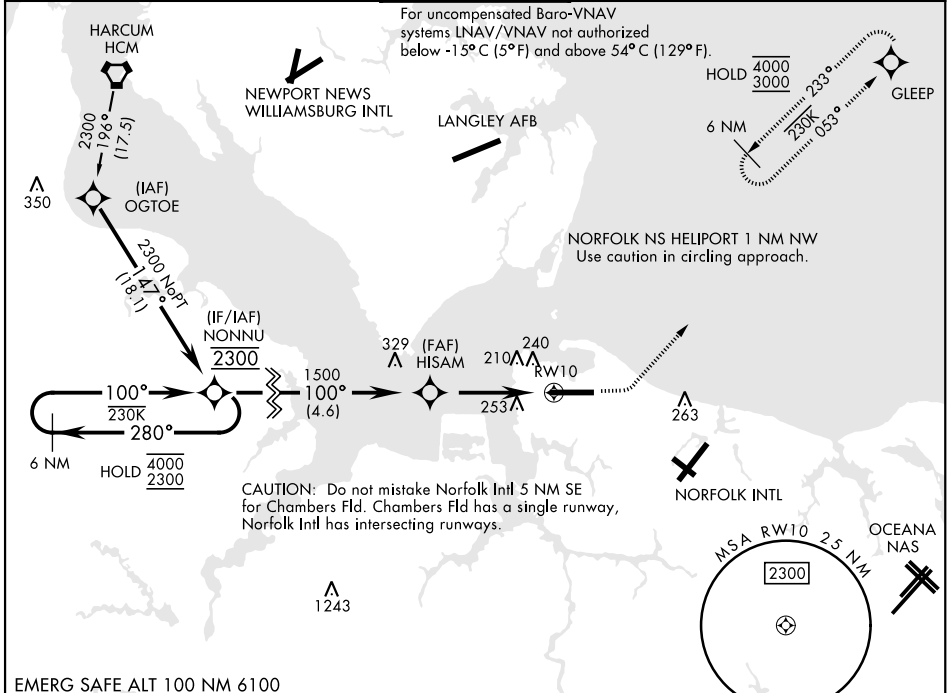
RNP APCH - GPS

▼ \*When ALS inop, increase vis to ¾ mile.  
 \*\*When ALS inop, increase vis to 1½ miles.  
 \*\*\*When ALS inop, increase CAT AB vis to 1 mile, CAT CDE vis to 1½ miles.  
 \*\*\*\*Circling not authorized S of Rwy 10-28.

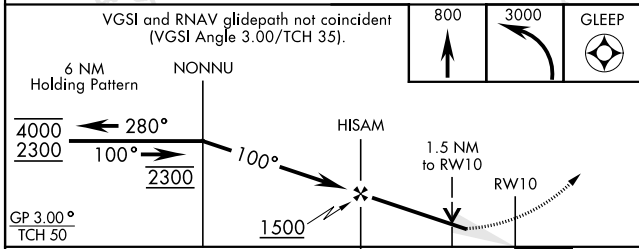


MISSED APPROACH: Climb to 800 then climbing left turn to 3000 direct GLEEP and hold.

ATIS <b>118.425 338.225</b>	APP CON <b>118.9 273.475</b>	CHAMBERS TOWER <b>124.3 379.15</b>	GND CON <b>121.8 370.85</b>	ASR/PAR
--------------------------------	---------------------------------	---------------------------------------	--------------------------------	---------

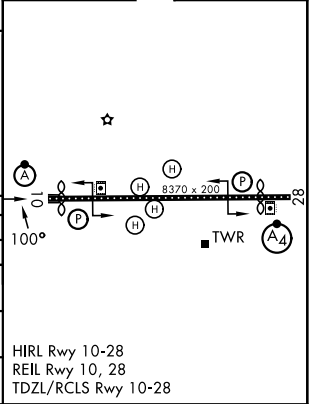


EMERG SAFE ALT 100 NM 6100



ELEV	15	TDZE	14
------	----	------	----

CATEGORY	A	B	C	D	E
LPV DA *	214-½		200	(200-½)	
LNAV/VNAV DA **	520-1		506	(600-1)	
LNAV MDA ***	520-½ 506 (600-½)		520-1	506	(600-1)
CIRCLING ****	520-1 505 (600-1)	540-1 525 (600-1)	540-½ 525 (600-½)	600-2	585 (600-2)



# RNAV (GPS) RWY 10

NE-3, 14 MAY 2026 to 11 JUN 2026

NE-3, 14 MAY 2026 to 11 JUN 2026