

TACAN Z RWY 28

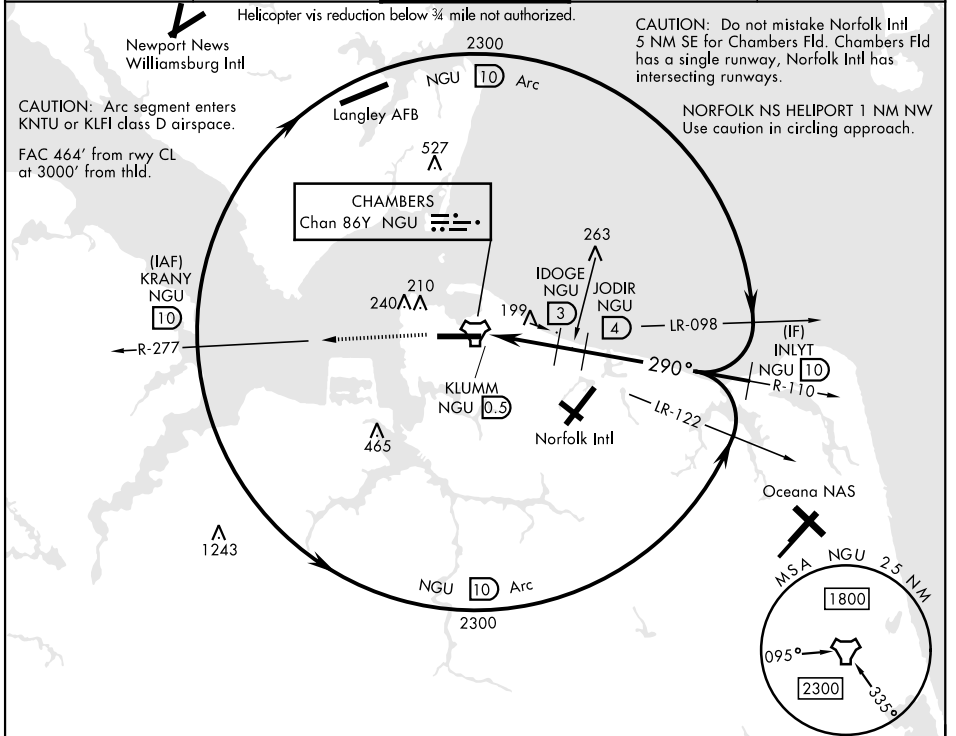
TACAN NGU Chan 86Y	APCH CRS 290°	Rwy Idg TDZE Arprt Elev	7375 14 15
------------------------------	-------------------------	-------------------------------	---------------------------------------

[USN]

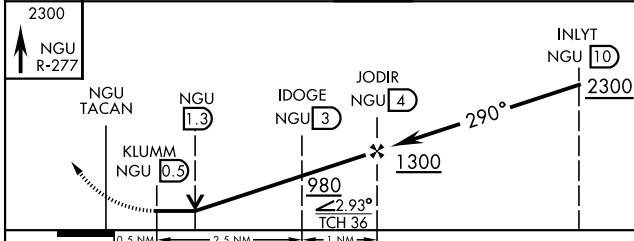
NORFOLK NS (CHAMBERS FLD) (KNGU)

RADAR required		MALSF	MISSED APPROACH: Climb to 2300 on NGU TACAN R-277 then as directed by ATC.
▼ * When ALS inop, increase CAT AB vis to 1 mile, CAT CD vis to 1½ miles. ** Circling not authorized S of Rwy 10-28.			

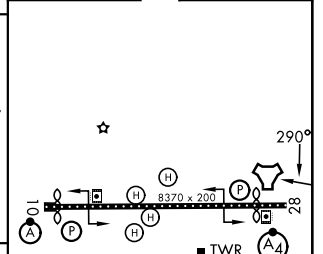
ATIS 118.425 338.225	APP CON 118.9 273.475	CHAMBERS TOWER 124.3 379.15	GND CON 121.8 370.85	ASR/PAR
--------------------------------	---------------------------------	---------------------------------------	--------------------------------	---------



EMERG SAFE ALT 100 NM 6100



ELEV	15	TDZE	14
------	----	------	----



CATEGORY	A	B	C	D	E
S-28 *	460-¾	446 (500-¾)	460-1	446 (500-1)	
CIRCLING**	520-1 505 (600-1)	540-1 525 (600-1)	540-1½ 525 (600-1½)	600-2	585 (600-2)

HIRL Rwy 10-28
REIL Rwy 10, 28
TDZL/RCLS Rwy 10-28

TACAN Z RWY 28

NE-3, 14 MAY 2026 to 11 JUN 2026

NE-3, 14 MAY 2026 to 11 JUN 2026