


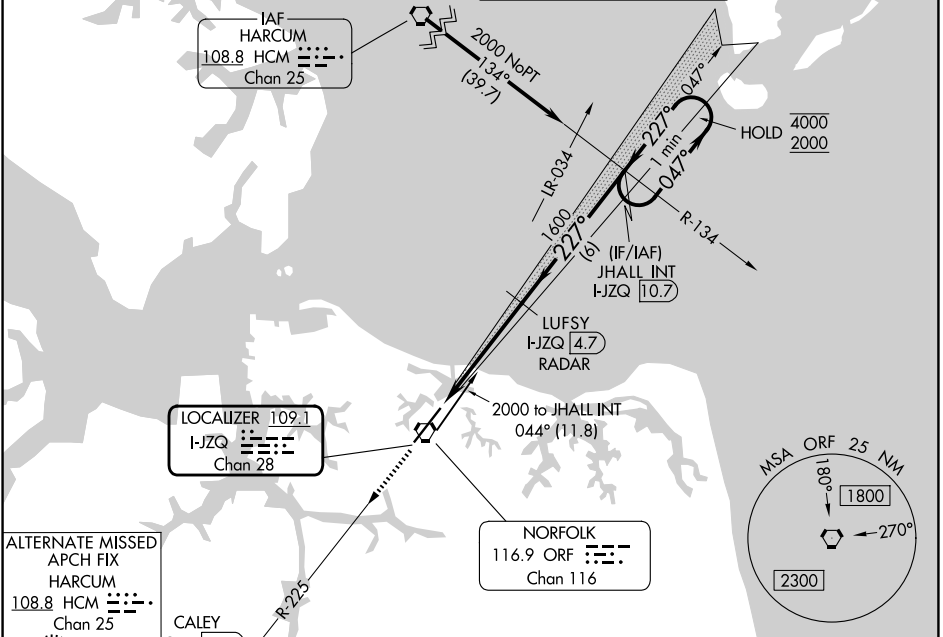
LOC/DME I-JZQ 109.1 Chan 28	APP CRS 227°	Rwy Ldg TDZE Apt Elev	8995 26 26
--	------------------------	-----------------------------	---------------------------------------

ILS or LOC RWY 23

NORFOLK INTL (ORF)

DME or RADAR required.		MALSRR 	MISSED APPROACH: Climb to 2000 on ORF VORTAC R-225 to CALEY/ORF 11.5 DME/RADAR and hold.
------------------------	--	---	--

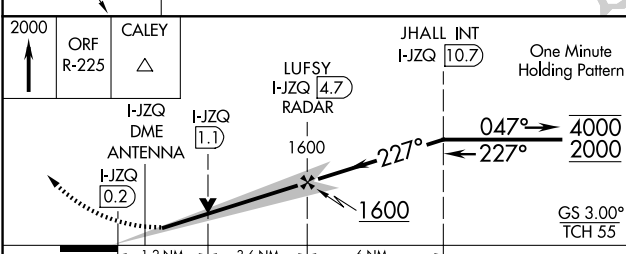
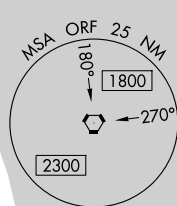
ATIS 127.15	NORFOLK APP CON 118.9 353.7	NORFOLK TOWER 120.8 257.8	GND CON 121.9
-----------------------	---------------------------------------	-------------------------------------	-------------------------



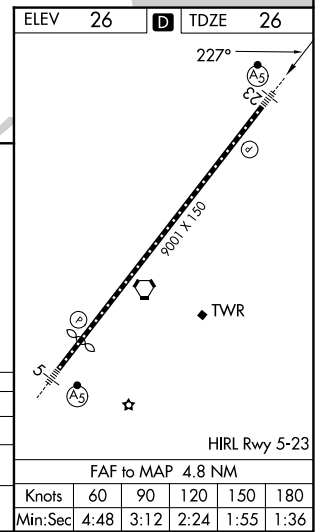
ALTERNATE MISSED APCH FIX
HARCUM
108.8 HCM
Chan 25

LOCALIZER 109.1
I-JZQ
Chan 28

NORFOLK
116.9 ORF
Chan 116



CATEGORY	A	B	C	D
S-ILS 23	226-1/2 200 (200-1/2)			
S-LOC 23	460-1/2	434 (500-1/2)	460-3/4	434 (500-3/4)
CIRCLING	480-1 454 (500-1)	540-1 514 (600-1)	540-1 1/2 514 (600-1 1/2)	900-2 3/4 874 (900-2 3/4)



NE-3, 14 MAY 2026 to 11 JUN 2026

NE-3, 14 MAY 2026 to 11 JUN 2026

FAF to MAP 4.8 NM	Knots	60	90	120	150	180
	Min:Sec	4:48	3:12	2:24	1:55	1:36