

APP CRS	Rwy Ldg	<b>8995</b>
<b>227°</b>	TDZE	<b>26</b>
	Apt Elev	<b>27</b>

# RNAV (RNP) Y RWY 23

NORFOLK INTL (ORF)

**▼** For uncompensated Baro-VNAV systems, procedure NA below -9°C (16°F) or above 54°C (130°F). GPS required. For inop ALS, increase RNP 0.10 DA visibility all Cats to 1½ SM, increase RNP 0.30 DA visibility all Cats to 1¾ SM.

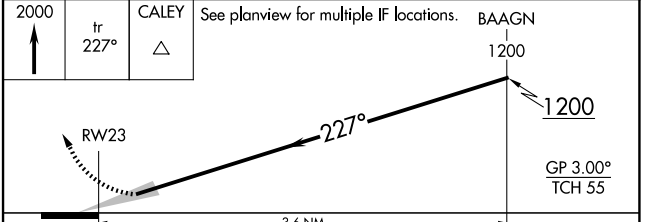
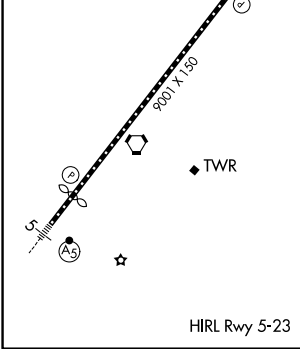
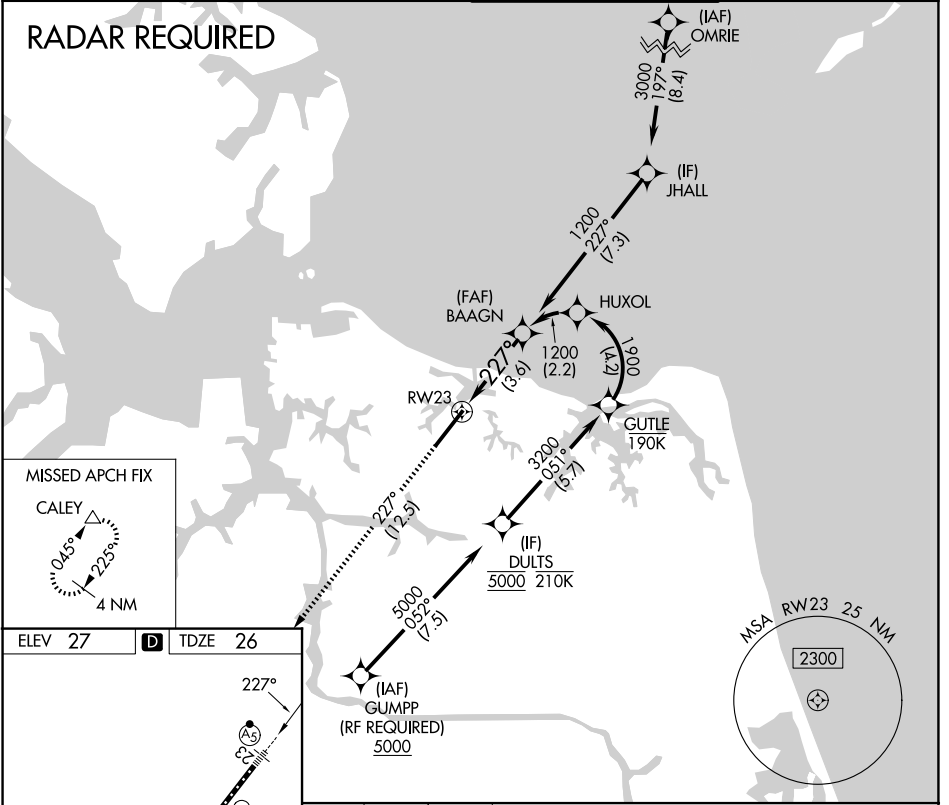
**MALS**  
  
**MISSED APPROACH:** Climb to 2000 on track 227° to CALEY and hold.

ATIS  
**127.15**

NORFOLK APP CON  
**118.9 353.7**

NORFOLK TOWER  
**120.8 257.8**

GND CON  
**121.9**



CATEGORY	A	B	C	D
RNP 0.10 DA		432-¾	406 (500-¾)	
RNP 0.30 DA		491-1	465 (500-1)	

## AUTHORIZATION REQUIRED

NE-3, 14 MAY 2026 to 11 JUN 2026

NE-3, 14 MAY 2026 to 11 JUN 2026