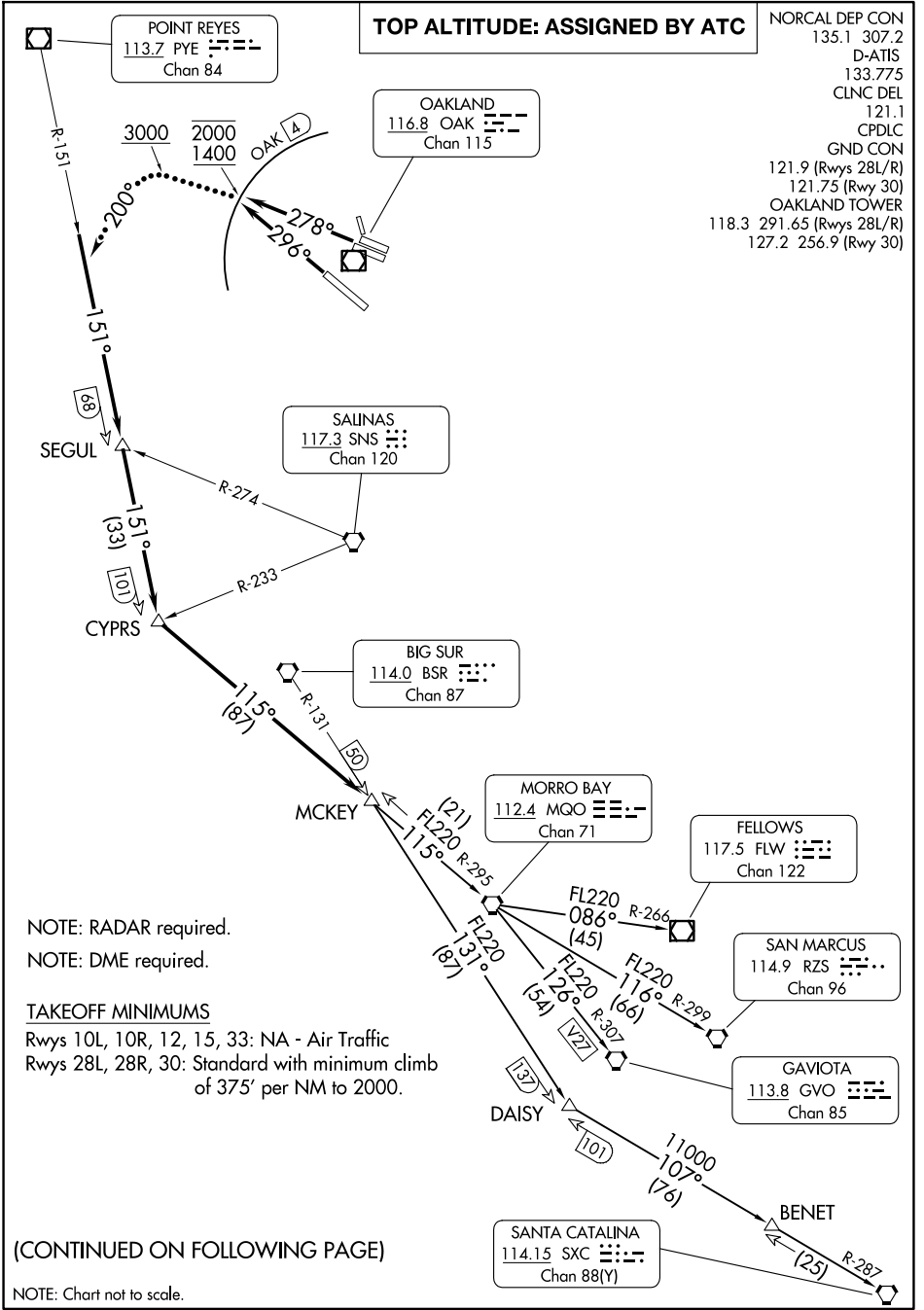


(COAST9.MCKEY) 25275  
**COAST NINE DEPARTURE**

AL-294 (FAA)

OAKLAND SAN FRANCISCO BAY (OAK)  
 OAKLAND, CALIFORNIA



SW-2, 14 MAY 2026 to 11 JUN 2026

SW-2, 14 MAY 2026 to 11 JUN 2026

NOTE: RADAR required.  
 NOTE: DME required.

TAKEOFF MINIMUMS  
 Rwy 10L, 10R, 12, 15, 33: NA - Air Traffic  
 Rwy 28L, 28R, 30: Standard with minimum climb  
 of 375' per NM to 2000.

(CONTINUED ON FOLLOWING PAGE)

NOTE: Chart not to scale.

**COAST NINE DEPARTURE**  
 (COAST9.MCKEY) 01FEB18

OAKLAND, CALIFORNIA  
 OAKLAND SAN FRANCISCO BAY (OAK)



DEPARTURE ROUTE DESCRIPTION

TAKEOFF RUNWAYS 28L/R: Climb heading 278° for RADAR vectors to PYE R-151, cross 4 DME northwest of OAK VOR/DME at or above 1400 and at or below 2000. Thence . . . .

TAKEOFF RUNWAY 30: Climb heading 296° for RADAR vectors to PYE R-151, cross 4 DME northwest of OAK VOR/DME at or above 1400 and at or below 2000. Thence . . . .

. . . . intercept and proceed on the PYE R-151 to SEGUL INT, then on PYE R-151 to CYPRS INT, then on MQO R-295 to MCKEY INT, then on assigned (transition). Maintain FL220. Expect clearance to filed altitude ten minutes after departure.

LOST COMMUNICATIONS: After reaching 3000, turn left heading 200° to intercept and proceed on PYE R-151, then resume own navigation.

FELLOWS TRANSITION (COAST9.FLW): From over MCKEY INT on MQO R-295 to MQO VORTAC, then on MQO R-086 and FLW R-266 to FLW VOR/DME.

GAVIOTA TRANSITION (COAST9.GVO): From over MCKEY INT on MQO R-295 to MQO VORTAC, then on MQO R-126 and GVO R-307 to GVO VORTAC.

SAN MARCUS TRANSITION (COAST9.RZS): From over MCKEY INT on MQO R-295 to MQO VORTAC, then on MQO R-116 and RZS R-299 to RZS VORTAC.

SANTA CATALINA TRANSITION (COAST9.SXC): From over MCKEY INT on BSR R-131 to DAISY INT, then on SXC R-287 to SXC VORTAC.

SW-2, 14 MAY 2026 to 11 JUN 2026

SW-2, 14 MAY 2026 to 11 JUN 2026