

LOC/DME I-INB <b>108.7</b> Chan 24	APP CRS <b>296°</b>	Rwy Ldg 10000 TDZE 9 Apt Elev 9
--	------------------------	--

# ILS RWY 30 (SA CAT I)

OAKLAND SAN FRANCISCO BAY (OAK)

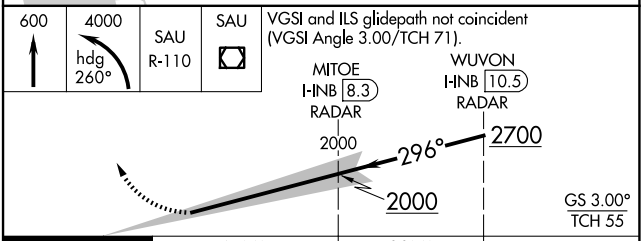
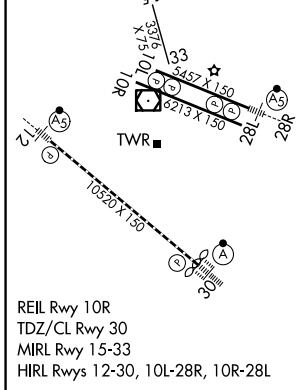
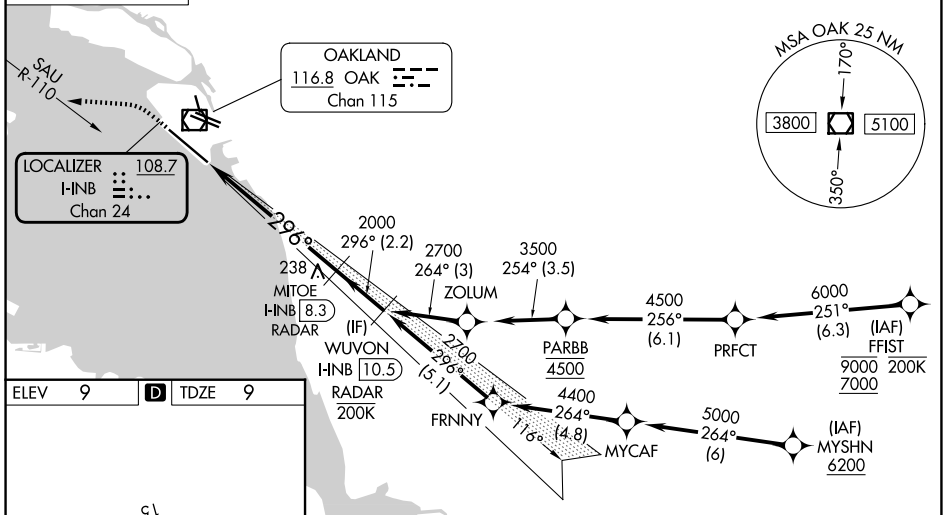
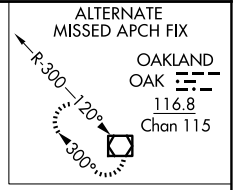
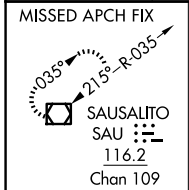
RNP APCH - GPS. From FFI1 or MYSHN.  
DME or RADAR required.

Requires specific OPSPEC, MSPEC, or LOA approval. Missed approach requires minimum climb of 213 feet per NM to 1540, if unable to meet climb gradient, see ILS or LOC RWY 30.

ALSF-2

MISSED APPROACH: Climb to 600 then climbing left turn to 4000 on heading 260° and on SAU VOR/DME R-110 to SAU VOR/DME and hold, continue climb-in-hold to 4000.

D-ATIS <b>133.775</b>	NORCAL APP CON <b>125.35 263.15</b>	OAKLAND TOWER <b>118.3 291.65</b> (10L/R-28L/R, 15-33) <b>127.2 256.9</b> (12-30)	GND CON <b>121.9</b> (10L/R-28L/R, 15-33) <b>121.75</b> (12-30)
--------------------------	--	---	---



CATEGORY	A	B	C	D
S-ILS 30	RA 150/14		150 DA 159	
<b>SA CATEGORY I ILS - SPECIAL AIRCREW &amp; AIRCRAFT CERTIFICATION REQUIRED</b>				

SW-2, 14 MAY 2026 to 11 JUN 2026

SW-2, 14 MAY 2026 to 11 JUN 2026