

ILS or LOC RWY 12

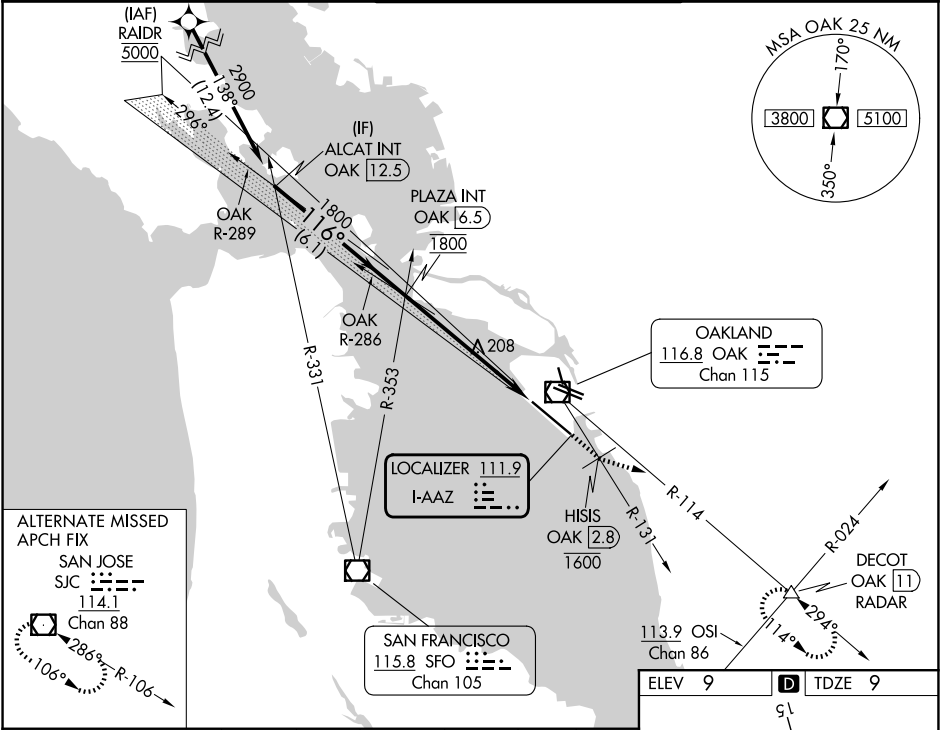
OAKLAND SAN FRANCISCO BAY (OAK)

LOC I-AAZ 111.9	APP CRS 116°	Rwy Ldg 10000
	TDZE 9	
	Apt Elev 9	

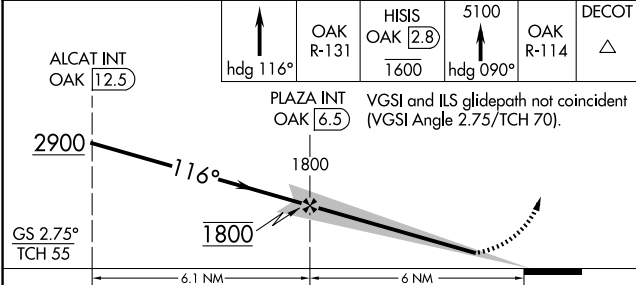
DME required. From RAIDR: RNAV 1-GPS required.
 *RVR 1800 authorized with the use of FD or AP or HUD to DA.

MALS R-131 MISSED APPROACH: Climb on heading 116° and on OAK VOR/DME R-131 to cross HISIS/OAK 2.8 DME at or below 1600 then climb to 5100 on heading 090° and on OAK VOR/DME R-114 to DECOT INT/OAK 11 DME/RADAR and hold, continue climb-in-hold to 5100.

D-ATIS 133.775	NORCAL APP CON 125.35 263.15	OAKLAND TOWER 118.3 291.65 (10L/R-28L/R, 15-33) 127.2 256.9 (12-30)	GND CON 121.9 (10L/R-28L/R, 15-33) 121.75 (12-30)
--------------------------	--	---	---



ALTERNATE MISSED APCH FIX
 SAN JOSE
 SJC
 114.1
 Chan 88
 286° R-106
 106°



ELEV 9	TDZE 9
REIL Rwy 10R	TDZ/CL Rwy 30
MIRL Rwy 15-33	MIRL Rwy 12-30, 10L-28R, 10R-28L
FAF to MAP 6 NM	
Knots	60 90 120 150 180
Min:Sec	6:00 4:00 3:00 2:24 2:00

CATEGORY	A	B	C	D
S-ILS 12*	209/24		200 (200-½)	
S-LOC 12	460/24	451 (500-½)	460/45	451 (500-¾)
CIRCLING	560-1	551 (600-1)	660-1¾ 651 (700-1¾)	1400-3 1391 (1400-3)

ILS or LOC RWY 12

SW-2, 14 MAY 2026 to 11 JUN 2026

SW-2, 14 MAY 2026 to 11 JUN 2026