

(OAKES, OAKES3) 12JUN25

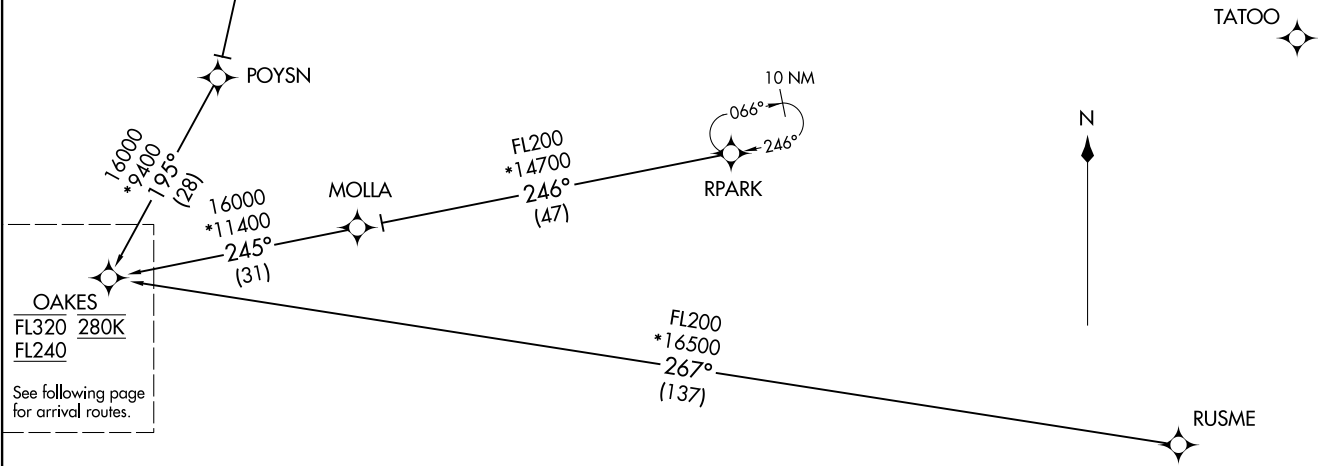
OAKES THREE ARRIVAL (RNAV) Transition Routes

- OAKLAND CENTER
134.37 281.5
- NORCAL APP CON
124.8 263.15
- HWD ATIS
126.7
- OAK D-ATIS
133.775
- OAKLAND TOWER
118.3 291.65 (Rwys 28L/R)
- 127.2 256.9 (Rwy 12-30)
- HAYWARD TOWER *
120.2 257.8
- HWD GND CON
121.4
- OAK GND CON
121.9 (Rwys 28L/R)
- 121.75 (Rwy 12-30)

RNAV 1 - DME/DME/IRU or GPS.
RADAR required.

MRLET TRANSITION (MRLET.OAKES3)
RPARK TRANSITION (RPARK.OAKES3)
RUSME TRANSITION (RUSME.OAKES3)

NOTE: Expect west transition unless otherwise indicated.



NOTE: Chart not to scale.

(CONTINUED ON FOLLOWING PAGE)

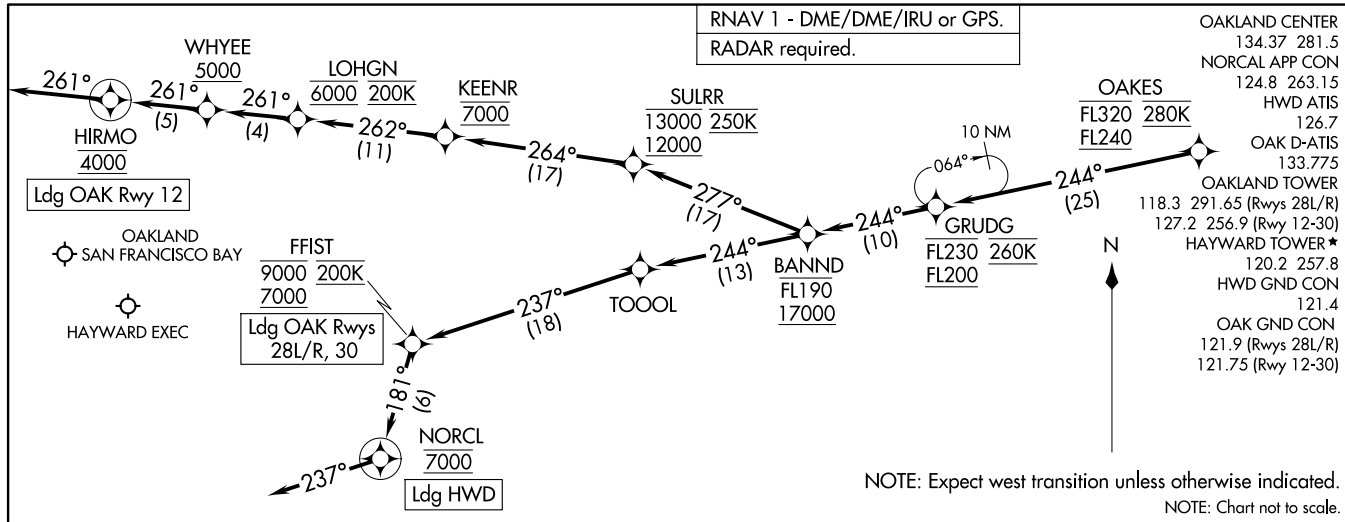
(OAKES, OAKES3) 25163

AL-294 (FAA) Transition Routes

OAKLAND, CALIFORNIA

(OAKES, OAKES3) 12JUN25

OAKES THREE ARRIVAL (RNAV) Arrival Routes



(OAKES, OAKES3) 25275 Arrival Routes

AL-294 (FAA)

OAKLAND, CALIFORNIA

ARRIVAL ROUTE DESCRIPTION

OAK: From OAKES on track 244° to cross GRUDG between FL200 and FL230 and at 260K, then on track 244° to cross BANND between 17000 and FL190.

LANDING OAK RUNWAY 12: From BANND on track 277° to cross SULRR between 12000 and 13000 and at 250K, then on track 264° to cross KEENR at 7000, then on track 262° to cross LOHGN at 6000 and at 200K, then on track 261° to cross WHYEE at or above 5000, then on track 261° to cross HIRMO at 4000, then on track 261°. Expect RNAV (RNP) Z RWY 12 approach or RADAR vectors to final approach course.

LANDING OAK RUNWAYS 28L/R, 30: From BANND on track 244° to TOOOL, then on track 237° to cross FFIST between 7000 and 9000 and at 200K. Expect ILS or RNAV approach Rwy 28L/R, 30 approach.

LANDING HWD: From OAKES on track 244° to cross GRUDG between FL200 and FL230 and at 260K, then on track 244° to cross BANND between 17000 and FL190, then on track 244° to TOOOL, then on track 237° to cross FFIST between 7000 and 9000 and at 200K, then on track 181° to cross NORCL at 7000, then on track 237°. Expect RADAR vectors to final approach course.

OAKLAND, CALIFORNIA