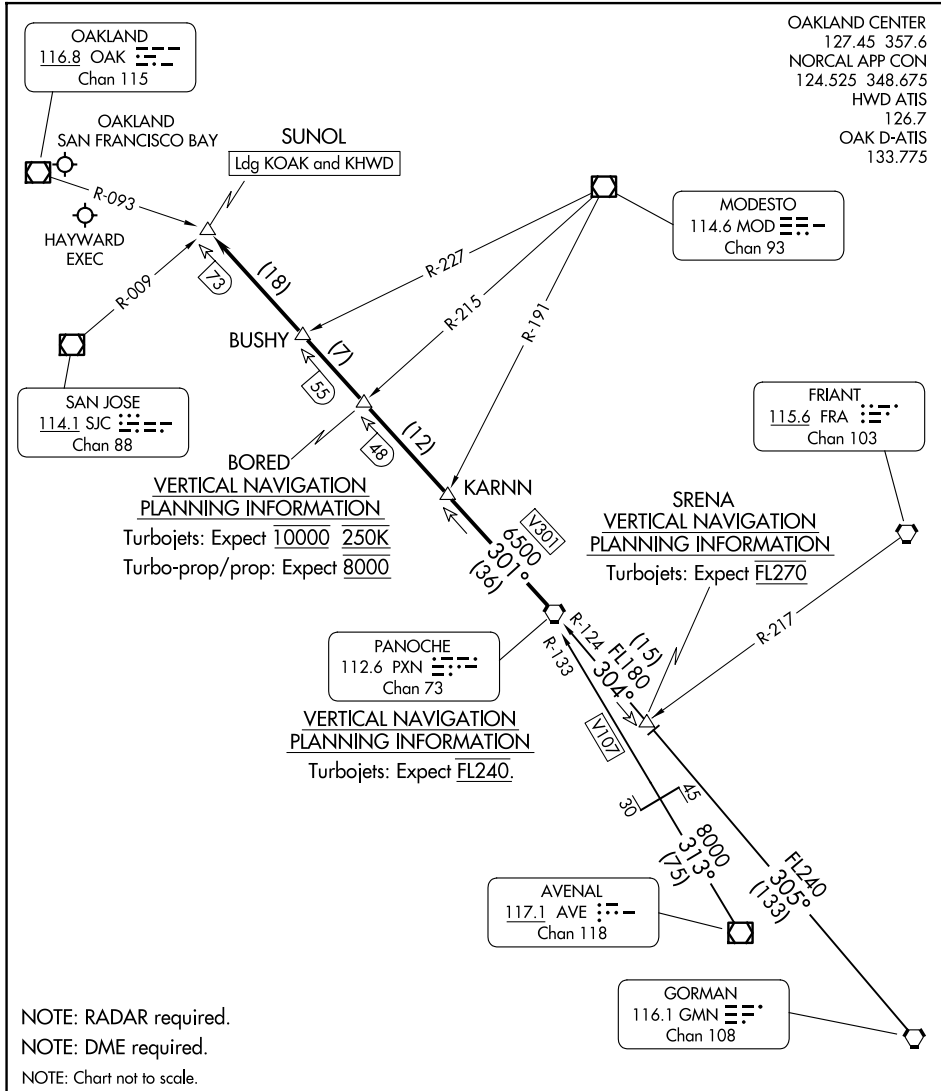


PANOCHÉ SIX ARRIVAL



SW-2, 14 MAY 2026 to 11 JUN 2026

SW-2, 14 MAY 2026 to 11 JUN 2026

ARRIVAL ROUTE DESCRIPTION

AVENAL TRANSITION (AVE.PXN6): From over AVE VOR/DME on AVE R-313 and PXN R-133 to PXN VORTAC. Thence. . .

GORMAN TRANSITION (GMN.PXN6): From over GMN VORTAC on GMN R-305 and PXN R-124 to SRENA, then on PXN R-124 to PXN VORTAC. Thence. . .

. . . From over PXN VORTAC on PXN R-301 to SUNOL. Expect RADAR vectors to final approach course.

PANOCHÉ SIX ARRIVAL