

|             |                      |
|-------------|----------------------|
| APP CRS     | Rwy Ldg <b>10000</b> |
| <b>116°</b> | TDZE <b>9</b>        |
|             | Apt Elev <b>9</b>    |

# RNAV (RNP) Z RWY 12

OAKLAND SAN FRANCISCO BAY (OAK)

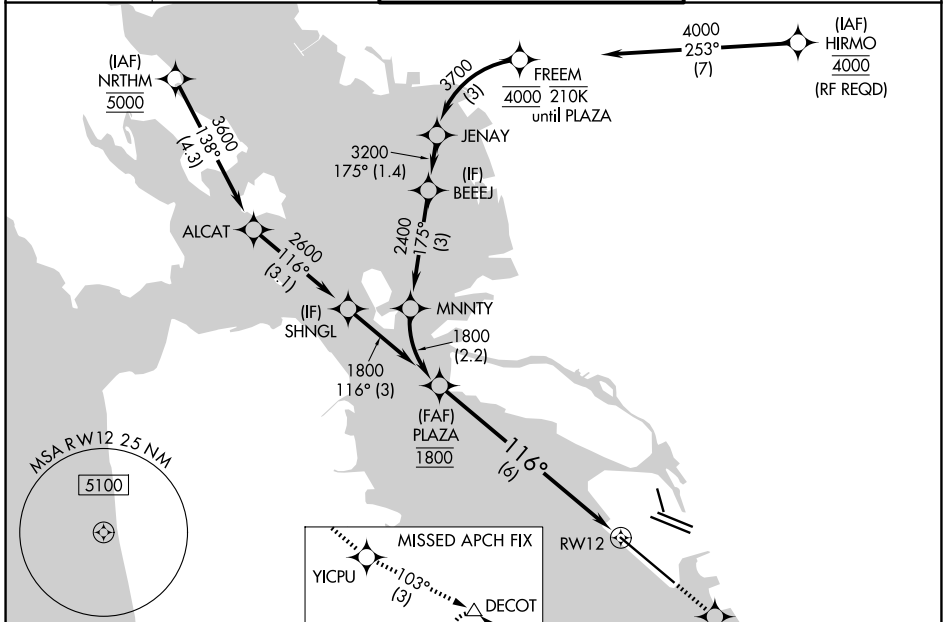
**RNP AR APCH.**

▼ For uncompensated Baro-VNAV systems, procedure NA below 0°C or above 54°C. For inop ALS increase RNP 0.15 visibility all Cats to RVR 4500, RNP 0.30 visibility all Cats to RVR 5500.

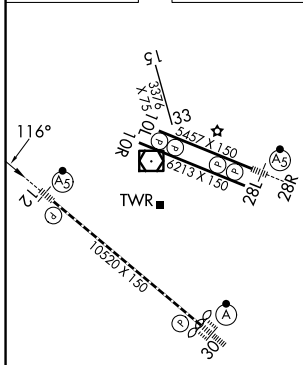
**MALSR**

MISSED APPROACH: Climb direct HISIS to cross HISIS at or below 1600 then climb to 5400 on track 116° to YICPU and on track 103° to DECOT and hold, continue climb-in-hold to 5400.

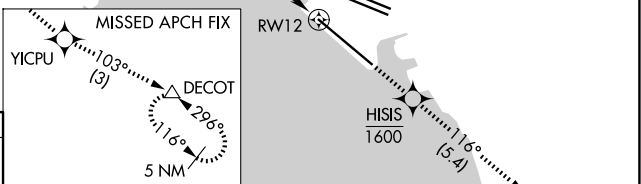
|                          |  |   |   |
|--------------------------|--|---|---|
| D-ATIS<br><b>133.775</b> | NORCAL APP CON<br><b>125.35 263.15</b> | OAKLAND TOWER<br><b>118.3 291.65</b> (10L/R-28L/R, 15-33)<br><b>127.2 256.9</b> (12-30) | GND CON<br><b>121.9</b> (10L/R-28L/R, 15-33)<br><b>121.75</b> (12-30) |
|--------------------------|--|---|---|



|        |          |        |
|--------|----------|--------|
| ELEV 9 | <b>D</b> | TDZE 9 |
|--------|----------|--------|



REIL Rwy 10R  
TDZ/CL Rwy 30  
MIRL Rwy 15-33  
HIRL Rwys 12-30, 10L-28R, 10R-28L



See planview for multiple IF locations.

|            |            |      |         |       |
|------------|------------|------|---------|-------|
| PLAZA 1800 | HISIS 1600 | 5400 | YICPU   | DECOT |
| ↑          | ↑          | ↑    | tr 103° | △     |

VGSI and RNAV glidepath not coincident (VGSI Angle 2.75/TCH 70).

GP 2.75° TCH 55

6 NM

| CATEGORY    | A | B      | C           | D |
|-------------|---|--------|-------------|---|
| RNP 0.15 DA |   | 289/24 | 280 (300-½) |   |
| RNP 0.30 DA |   | 386/35 | 377 (400-⅔) |   |

**AUTHORIZATION REQUIRED**

SW-2, 14 MAY 2026 to 11 JUN 2026

SW-2, 14 MAY 2026 to 11 JUN 2026