

APP CRS	Rwy Ldg	10000
296°	TDZE	9
	Apt Elev	9

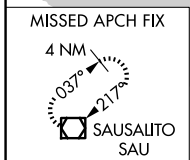
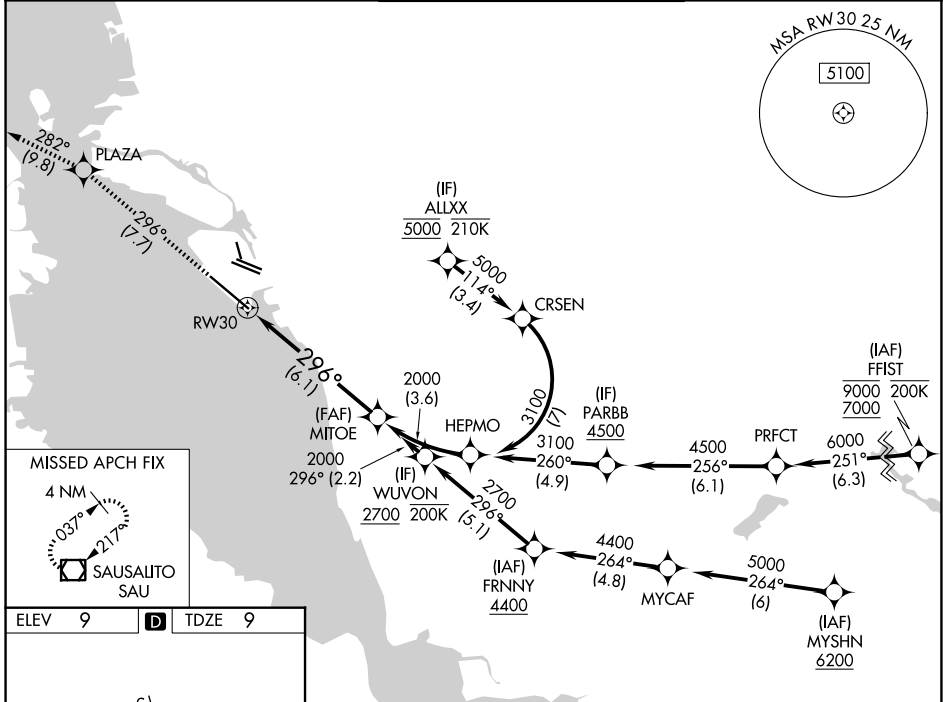
RNAV (RNP) Z RWY 30

OAKLAND SAN FRANCISCO BAY (OAK)

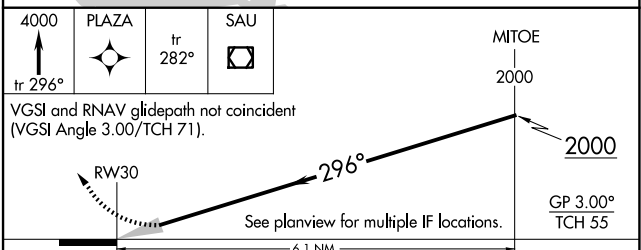
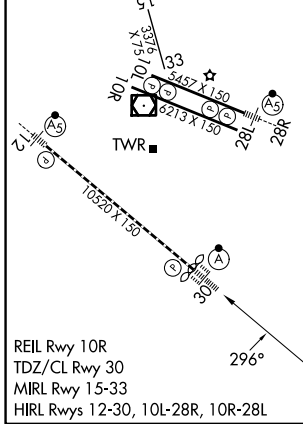
RNP AR APCH - GPS. Authorization required. From ALLXX or PARBB: RF.
 RADAR required.
 For uncompensated Baro-VNAV systems, procedure NA below 2°C or above 54°C. For inop ALS, increase RNP 0.15 all Cnts visibility to RVR 4500 and increase RNP 0.30 all Cnts visibility to RVR 5500.

ALSf-2
 MISSED APPROACH: Climb to 4000 on track 296° to PLAZA and on track 282° to SAU VOR/DME and hold, continue climb-in-hold to 4000.

D-ATIS 133.775	NORCAL APP CON 125.35 263.15	OAKLAND TOWER 118.3 291.65 (10L/R-28L/R, 15-33) 127.2 256.9 (12-30)	GND CON 121.9 (10L/R-28L/R, 15-33) 121.75 (12-30)
--------------------------	--	---	---



ELEV 9	D	TDZE 9
--------	----------	--------



CATEGORY	A	B	C	D
RNP 0.15 DA		281/24	272 (300-1/2)	
RNP 0.30 DA		385/35	376 (400-5/8)	

AUTHORIZATION REQUIRED

SW-2, 14 MAY 2026 to 11 JUN 2026

SW-2, 14 MAY 2026 to 11 JUN 2026