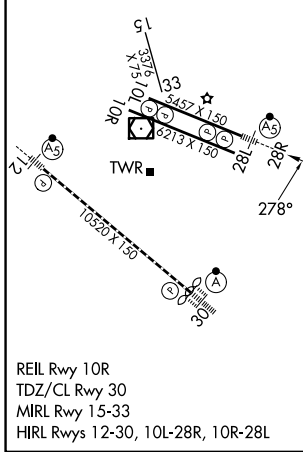
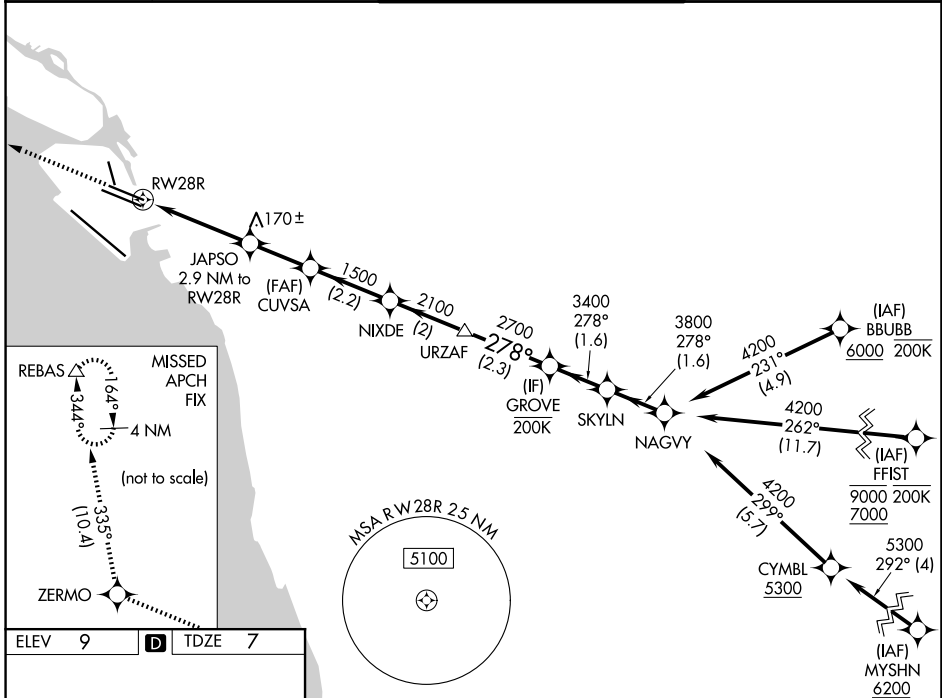


WAAS CH 42535 W28B	APP CRS 278°	Rwy Ldg TDZE Apt Elev	5457 7 9
----------------------------------------	------------------------	-----------------------------	-------------------------------------

RNAV (GPS) Y RWY 28R

OAKLAND SAN FRANCISCO BAY (OAK)

RNP APCH - GPS.		MALSR 	MISSED APPROACH: Climb to 3000 direct ZERMO and on track 335° to REBAS and hold.
▼ For uncompensated Baro-VNAV systems, LNAV/VNAV NA below 2°C or above 54°C. For inop ALS, LNAV/VNAV all Cats increase visibility to RVR 5500. * RVR 1800 authorized with use of FD or AP or HUD to DA.	OAKLAND TOWER 118.3 291.65 (10L/R-28L/R, 15-33) 127.2 256.9 (12-30)		GND CON 121.9 (10L/R-28L/R, 15-33) 121.75 (12-30)
D-ATIS 133.775	NORCAL APP CON 125.35 263.15		



3000	ZERMO ◆	tr 335°	REBAS Δ						
	JAPSO 1500	CUVSA 1500	NIXDE 2100	URZAF 2700	GROVE 3400	SKYLN 3800	NAGVY 4200		
	1.2 NM to RWY 28R	1.7 NM	1.6 NM	2.2 NM	2.2 NM	2.3 NM	1.6 NM	1.6 NM	GP 3.00° TCH 53
CATEGORY	A		B		C		D		
LPV DA*	207/24		200 (200-½)						
LNAV/VNAV DA	387/35		380 (400-¾)						
LNAV MDA	440/24		433 (500-½)		440/40		433 (500-¾)		
CIRCLING	560-1		551 (600-1)		660-1¾ 651 (700-1¾)		1400-3 1391 (1400-3)		

SW-2, 14 MAY 2026 to 11 JUN 2026

SW-2, 14 MAY 2026 to 11 JUN 2026