

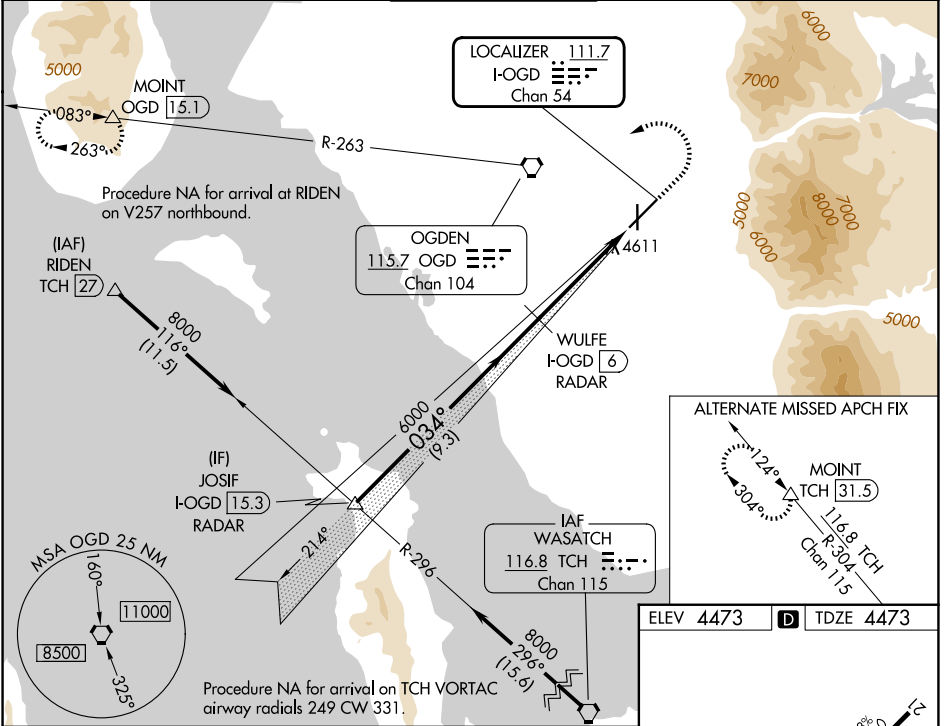
LOC/DME I-OGD <b>111.7</b> Chan <b>54</b>	APP CRS <b>034°</b>	Rwy Ldg <b>7253</b> TDZE <b>4473</b> Apt Elev <b>4473</b>
---	------------------------	---

# ILS or LOC RWY 3

OGDEN-HINCKLEY (OGD)

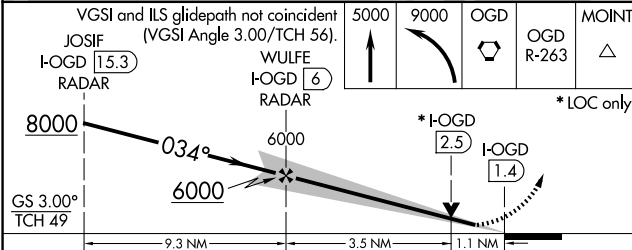
DME required. RADAR required for procedure entry.	MALS 	MISSED APPROACH: Climb to 5000 then climbing left turn to 9000 direct OGD VORTAC and on OGD VORTAC R-263 to MOINT/OGD 15.1 DME and hold, continue climb-in-hold to 9000.
<b>⚠</b> Rwy 3 helicopter visibility reduction below 3/4 SM NA. For inop ALS, increase S-ILS 3 all Cats visibility to 3/8 SM. For inop ALS, increase S-LOC 3 Cat C/D visibility to 1 1/8 SM. Circling NA for Cats C and D east of Rwy 21 and 35.		

ATIS <b>125.55</b>	SALT LAKE CITY APP CON <b>121.1</b>	OGDEN TOWER* <b>118.7 (CTAF) 0 253.5</b>	GND CON <b>121.7</b>	UNICOM <b>122.95</b>
-----------------------	--	---	-------------------------	-------------------------



SW-4, 14 MAY 2026 to 11 JUN 2026

SW-4, 14 MAY 2026 to 11 JUN 2026



ELEV 4473	<b>D</b> TDZE 4473												
HIRL Rwy 3-21 <b>Ⓛ</b> MRL Rwy 17-35 <b>Ⓛ</b> REIL Rwy 17 and 35 <b>Ⓛ</b>													
FAF to MAP 4.6 NM													
<table border="1"> <tr> <th>Knots</th> <td>60</td> <td>90</td> <td>120</td> <td>150</td> <td>180</td> </tr> <tr> <th>Min:Sec</th> <td>4:36</td> <td>3:04</td> <td>2:18</td> <td>1:50</td> <td>1:32</td> </tr> </table>	Knots	60	90	120	150	180	Min:Sec	4:36	3:04	2:18	1:50	1:32	
Knots	60	90	120	150	180								
Min:Sec	4:36	3:04	2:18	1:50	1:32								

CATEGORY	A	B	C	D
S-ILS 3	4740-3/4 267 (300-3/4)			
S-LOC 3	4880-3/4	407 (500-3/4)	4880-1	407 (500-1)
CIRCLING	4980-1 507 (600-1)	5100-1 627 (700-1)	5100-1 3/4 627 (700-1 3/4)	5180-2 1/4 707 (800-2 1/4)