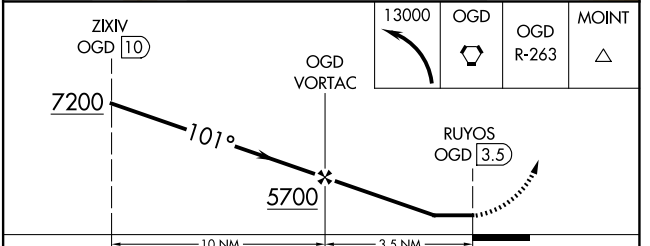
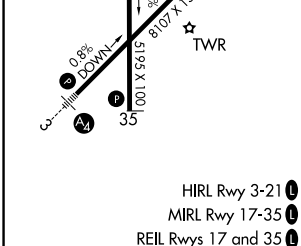
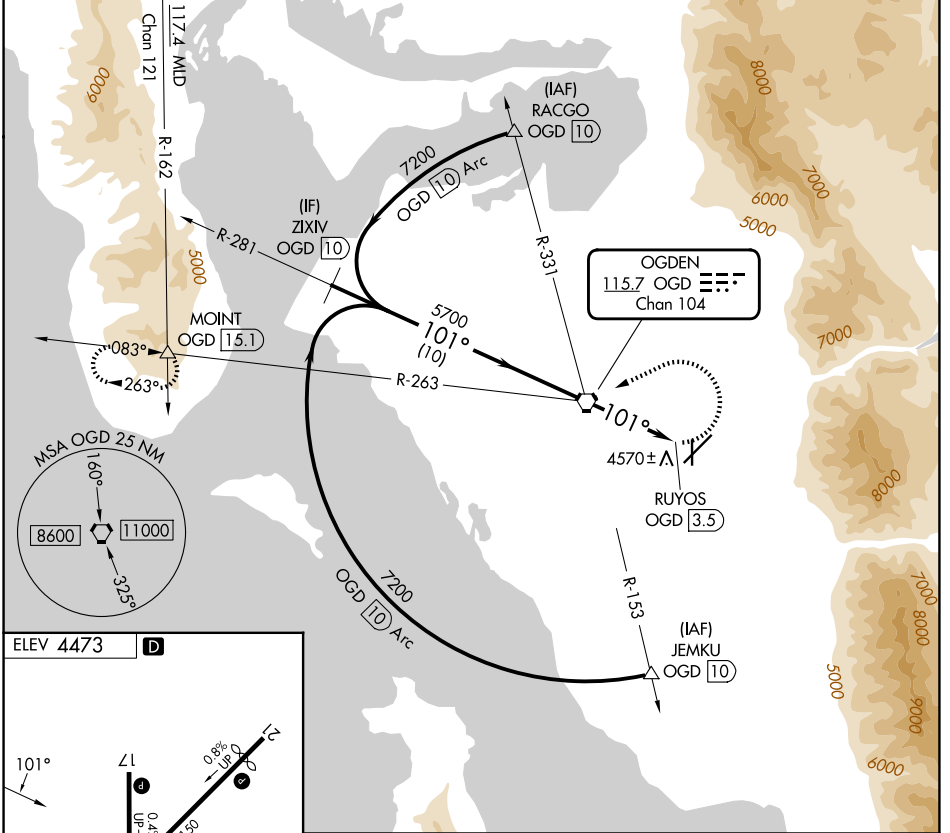


VORTAC OGD <b>115.7</b> Chan <b>104</b>	APP CRS <b>101°</b>	Rwy Ldg TDZE Apt Elev <b>4473</b>	<b>N/A</b> <b>N/A</b> <b>4473</b>
---	------------------------	---	---

**VOR-A**  
OGDEN-HINCKLEY (OGD)

DME or RADAR required.		MISSED APPROACH: Climbing left turn to 13000 direct OGD VORTAC and an OGD VORTAC R-263 to MOINT/15.1 DME and hold, continue climb-in-hold to 13000.	
Circling NA for Cat C/D east of Rwys 21 and 35.			

ATIS <b>125.55</b>	SALT LAKE CITY APP CON <b>121.1</b>	OGDEN TOWER* <b>118.7 (CTAF) 253.5</b>	GND CON <b>121.7</b>	UNICOM <b>122.95</b>
-----------------------	--	---	-------------------------	-------------------------



FAF to MAP 3.5 NM					
Knots	60	90	120	150	180
Min:Sec	3:30	2:20	1:45	1:24	1:10
CATEGORY	A	B	C	D	
CIRCLING	4980-1 507 (600-1)	5100-1 627 (700-1)	5100-1¼ 627 (700-1¼)	5180-2¼ 707 (800-2¼)	

OGDEN, UTAH  
Orig-B 07AUG25

41°12'N-112°01'W

OGDEN-HINCKLEY (OGD)  
**VOR-A**

SW-4, 14 MAY 2026 to 11 JUN 2026

SW-4, 14 MAY 2026 to 11 JUN 2026