

OKLAHOMA CITY, OKLAHOMA

HI-TACAN Y RWY 36

TACAN TIK Chan 105	APCH CRS 359°	Rwy ldg 11,100 TDZE 1291 Arprt Elev 1291
-----------------------	------------------	--

[USAF]

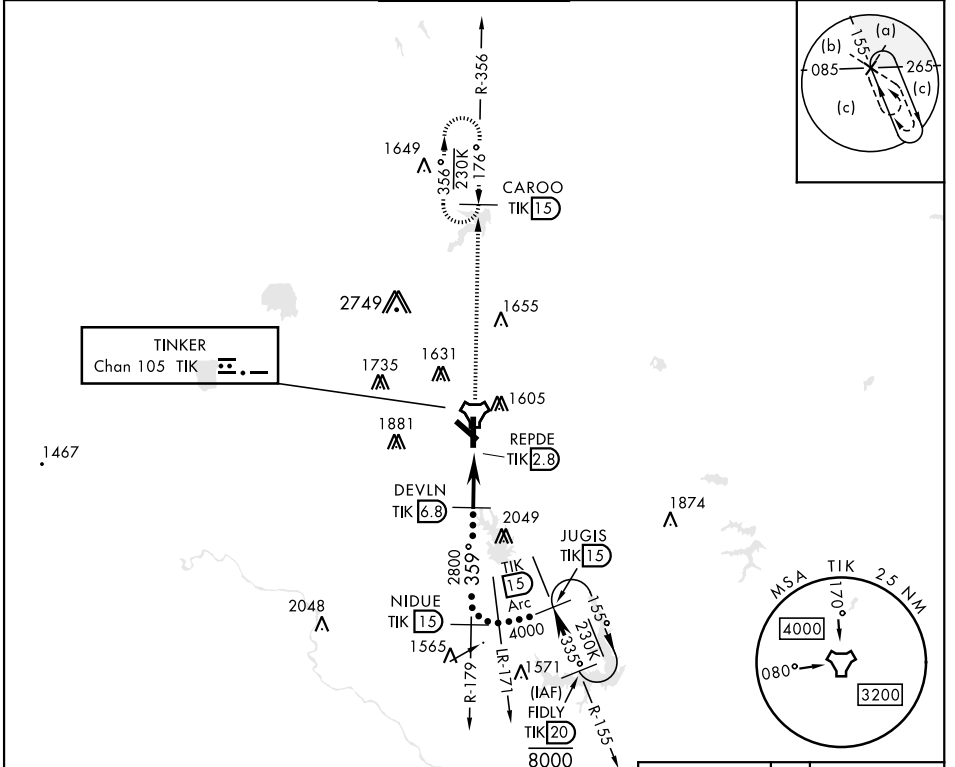
TINKER AFB (KTIK)

* When ALS inop, increase CAT CDE vis by 1/2 mile.
 ** CAT E circling not authorized in sector S of Rwy 13-31. Circling not authorized to Rwy 18.



MISSED APPROACH: Climb to 4000 on TIK TACAN R-356 to CAROO and hold.

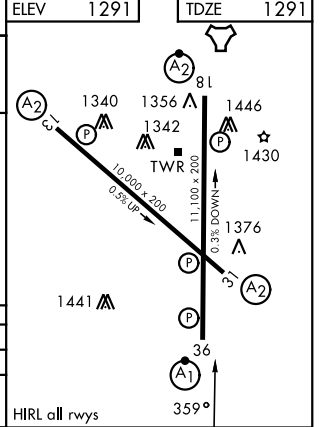
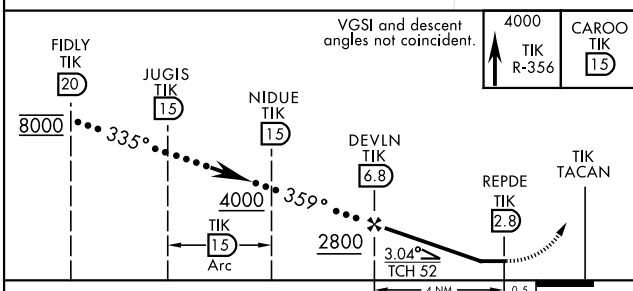
ATIS★ 270.1	OKE CITY APP CON 124.2 336.4	TOWER 124.45 251.05	GND CON 121.8 275.8	ASR
----------------	---------------------------------	------------------------	------------------------	-----



SC-1, 14 MAY 2026 to 11 JUN 2026

SC-1, 14 MAY 2026 to 11 JUN 2026

EMERG SAFE ALT 100 NM 4700



CATEGORY	C	D	E
S-36 *	1720/40	429 (500-3/4)	
CIRCLING**	1960-1 3/4 669 (700-1 3/4)	1960-2 669 (700-2)	1960-2 1/2 669 (700-2 1/2)

OKLAHOMA CITY, OKLAHOMA

35° 25' N-97° 23' W

TINKER AFB (KTIK)

Amtd 4 13JUN24

HI-TACAN Y RWY 36