

OKLAHOMA CITY, OKLAHOMA

ILS or LOC/DME Z RWY 18

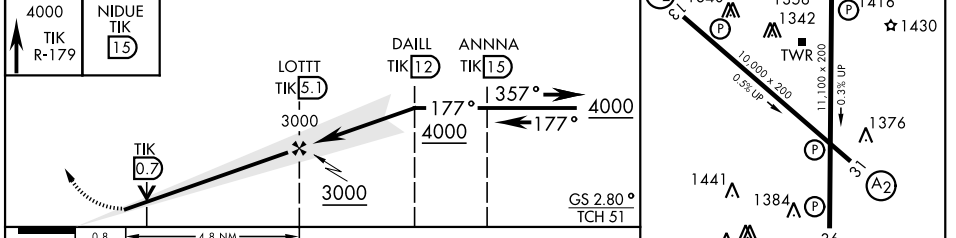
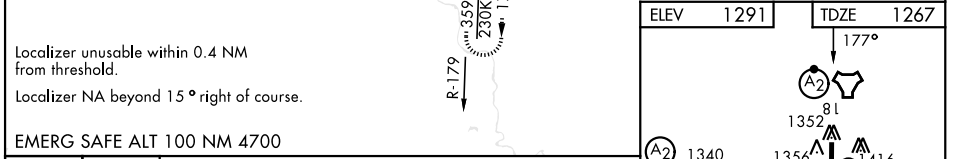
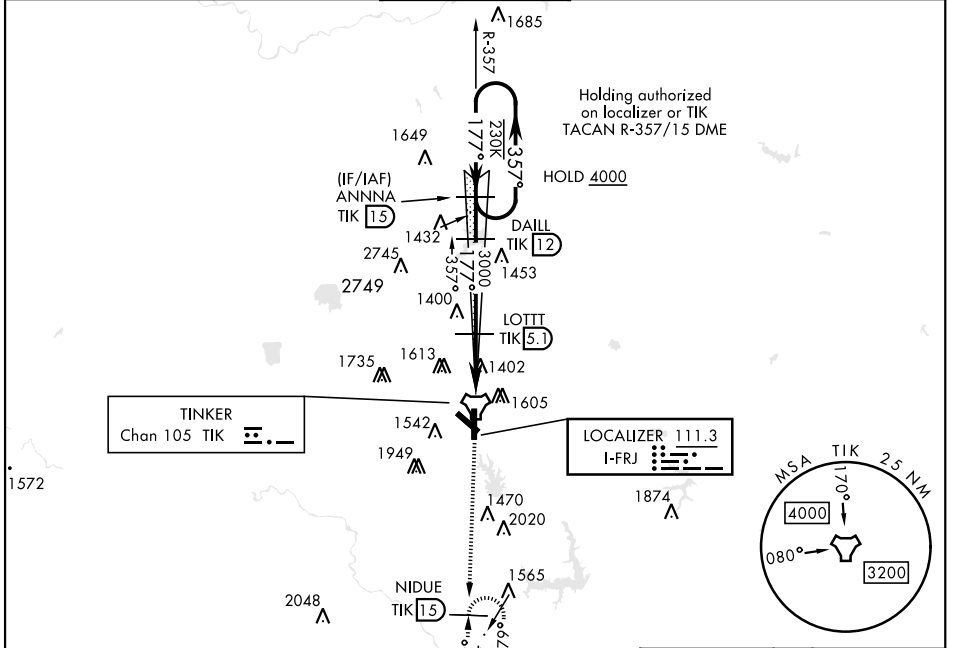
LOC I-FRJ 111.3	APCH CRS 177°	Rwy Idg 11,100 TDZE 1267 Arprt Elev 1291
---------------------------	-------------------------	---

[USAF]

TINKER AFB (KTIK)

<p>▼ * When ALS inop, increase all CAT to 55 and vis to 1 mile. ** CAT E Circling NA in sector S of Rwy 13-31 and W of Rwy 18-36. Circling NA to Rwy 18.</p>	<p>SALSF A2</p>	<p>MISSED APPROACH: Climb to 4000 on TIK TACAN R-179 to NIDUE and hold.</p>
--	---------------------	---

ATIS★ 270.1	OKE CITY APP CON 124.2 336.4	TOWER 124.45 251.05	GND CON 121.8 275.8	ASR
-----------------------	--	-------------------------------	-------------------------------	-----



CATEGORY	A	B	C	D	E
S-ILS 18		1467/40	200	(200-¾)	
S-LOC 18*		1640/40	373	(400-¾)	
CIRCLING**	1900-1	609 (700-1)	1960-1¾ 669 (700-1¾)	1960-2 669 (700-2)	1960-2¼ 669 (700-2¼)

HIRL all rwys					
FAF to MAP 4.8 NM					
Knots	60	90	120	150	180
Min:Sec	4:48	3:12	2:24	1:55	1:36

OKLAHOMA CITY, OKLAHOMA

35°25'N-97°23'W

TINKER AFB (KTIK)

Amtd 5 13JUN24

ILS or LOC/DME Z RWY 18

SC-1, 14 MAY 2026 to 11 JUN 2026

SC-1, 14 MAY 2026 to 11 JUN 2026