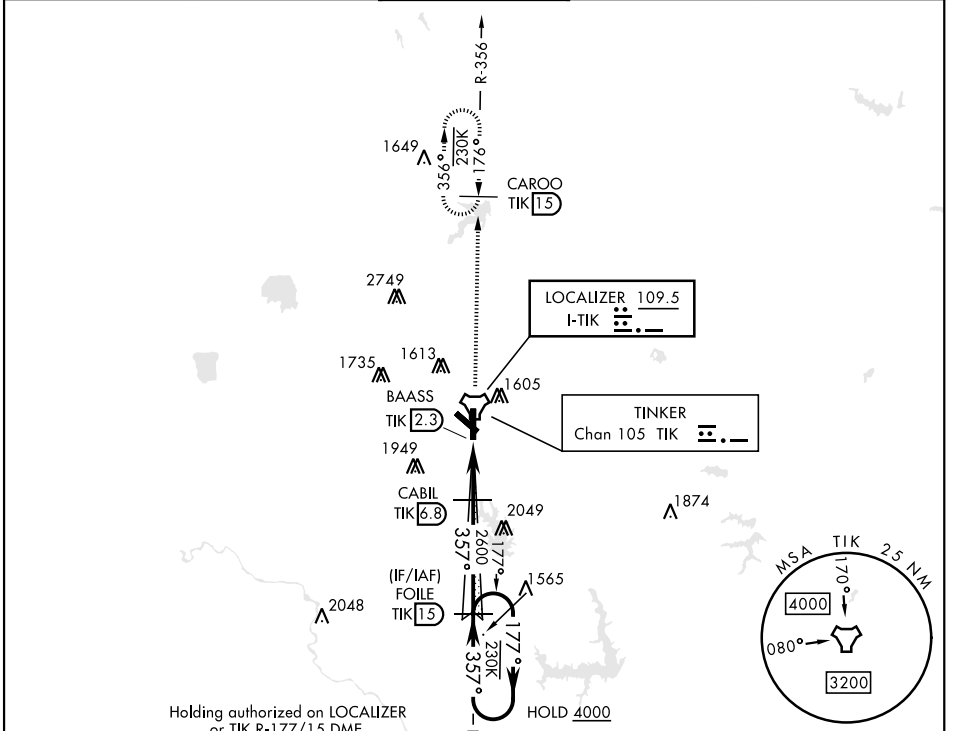


OKLAHOMA CITY, OKLAHOMA

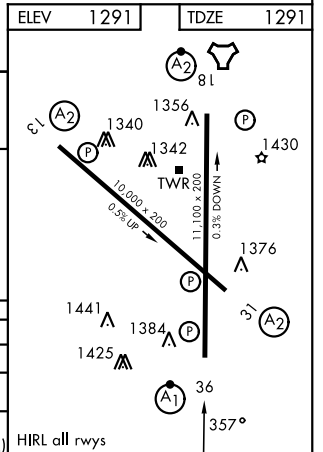
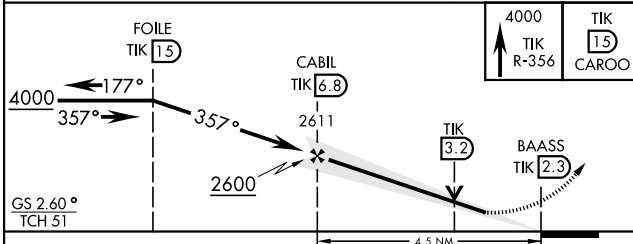
# ILS or LOC/DME Z RWY 36

LOC I-TIK <b>109.5</b>	APCH CRS <b>357°</b>	Rwy Idg <b>11,100</b> TDZE <b>1291</b> Arprt Elev <b>1291</b>	[USAF]	TINKER AFB (KTIK)
▼ * When ALS inop, increase CAT ABC RVR to 50 and vis to 1 mile, CAT DE RVR to 60 and vis to 1¼ mile. ** CAT E Circling NA to Rwy 18 and in sector S of Rwy 13-31 and W of Rwy 18-36.			ALS-1 	MISSED APPROACH: Climb to 4000 on TIK TACAN R-356 to CAROO and hold.

ATIS★ <b>270.1</b>	OKE CITY APP CON <b>124.2 336.4</b>	TOWER <b>124.45 251.05</b>	GND CON <b>121.8 275.8</b>	ASR
-----------------------	--	-------------------------------	-------------------------------	-----



EMERG SAFE ALT 100 NM 4700



CATEGORY	A	B	C	D	E
S-ILS 36	1491/24		200	(200-½)	
S-LOC 36 *	1680/24	389 (400-½)	1680/35	389 (400-¾)	
CIRCLING**	1820-1	1840-1	1960-1¾	1960-2	1960-2¼
	529 (600-1)	549 (600-1)	669 (700-1¾)	669 (700-2)	669 (700-2¼)

OKLAHOMA CITY, OKLAHOMA

35°25'N-97°23'W

TINKER AFB (KTIK)

Amtd 5 13JUN24

# ILS or LOC/DME Z RWY 36

SC-1, 14 MAY 2026 to 11 JUN 2026

SC-1, 14 MAY 2026 to 11 JUN 2026