

OKLAHOMA CITY, OKLAHOMA

RNAV (GPS) RWY 18

APCH CRS 176°	Rwy Idg THRE Arprt Elev	11,100 1260 1291
------------------	-------------------------------	------------------------

(USAF)

TINKER AFB (KTIK)

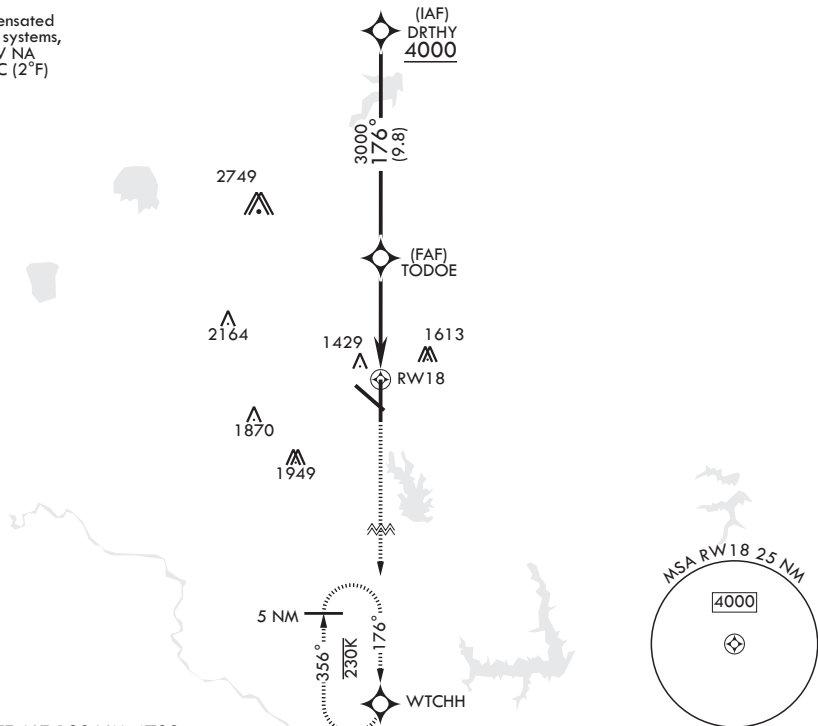
⚠ * Cat E Circling not authorized in sector S of Rwy 13-31 and W of Rwy 18-36.

SALSF MISSED APPROACH: Climb to 4000 direct WTCHH waypoint and hold.

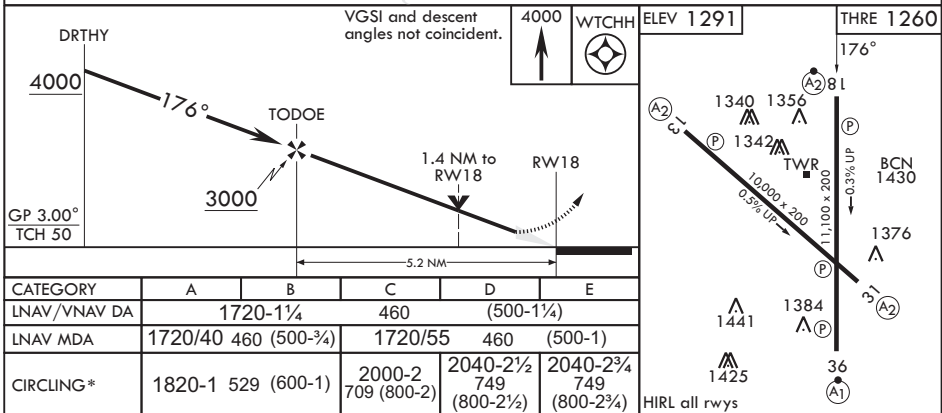
ATIS* 270.1	OKE CITY APP CON/DEP CON 124.2 336.4	TOWER 124.45 251.05	GND CON 121.8 275.8	ASR
----------------	---	------------------------	------------------------	-----

DME/DME RNP-0.3 NA

For uncompensated Baro-VNAV systems, LNAV/VNAV NA below -17°C (2°F)



EMERG SAFE ALT 100 NM 4700



OKLAHOMA CITY, OKLAHOMA

35°25'N - 97°23'W

TINKER AFB (KTIK)

Orig 13JUN24

RNAV (GPS) RWY 18

SC-1, 14 MAY 2026 to 11 JUN 2026

SC-1, 14 MAY 2026 to 11 JUN 2026