

OKLAHOMA CITY, OKLAHOMA


# RNAV (GPS) RWY 36

APCH CRS	Rwy Idg	11,100
356°	TDZE	1291
	Arprt Elev	1291

(USAF)

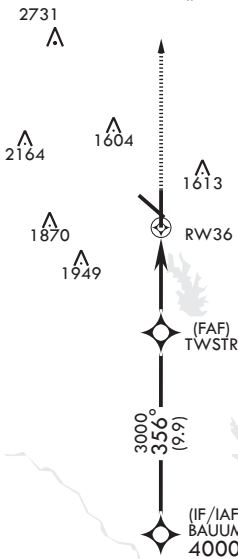
TINKER AFB (KTIK)

**⚠** \* Cat E Circling not authorized in sector S of Rwy 13-31 and W of Rwy 18-36.

**ALSF-1**  
  
**MISSED APPROACH:** Climb to 4000 direct OZZZZ waypoint and hold.



ATIS ★	OKE CITY APP CON/DEP CON	TOWER	GND CON	ASR
270.1	124.2 336.4	124.45 251.05	121.8 275.8	

For uncompensated Baro-VNAV systems, LNAV/VNAV NA below -17°C (2°F)



DME/DME RNP-0.3 NA

EMERG SAFE ALT 100 NM 4700

BAUUM 4000 GP 3.00° TCH 50	VGSI and descent angles not coincident.		4000 	OZZZZ 	ELEV 1291	TDZE 1291
	TWSTR 3000 356°		1.3 NM to RWY36	RWY36		
CATEGORY	A	B	C	D	E	
LNAV/VNAV DA	1739/53		448	(500-1)		
LNAV MDA	1740/24	449 (500-½)	1740/45	449	(500-¾)	
CIRCLING*	1820-1	529 (600-1)	2000-2 709 (800-2)	2040-2½ 749 (800-2½)	2040-2¾ 749 (800-2¾)	

OKLAHOMA CITY, OKLAHOMA  
 Amdt 1 13JUN24

35°25'N - 97°23'W

TINKER AFB (KTIK)

# RNAV (GPS) RWY 36

SC-1, 14 MAY 2026 to 11 JUN 2026

SC-1, 14 MAY 2026 to 11 JUN 2026