

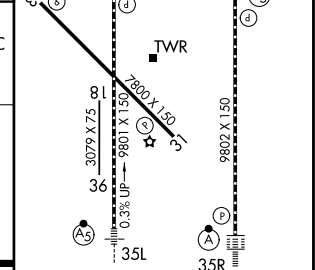
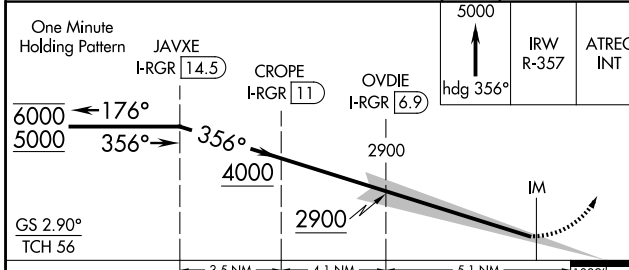
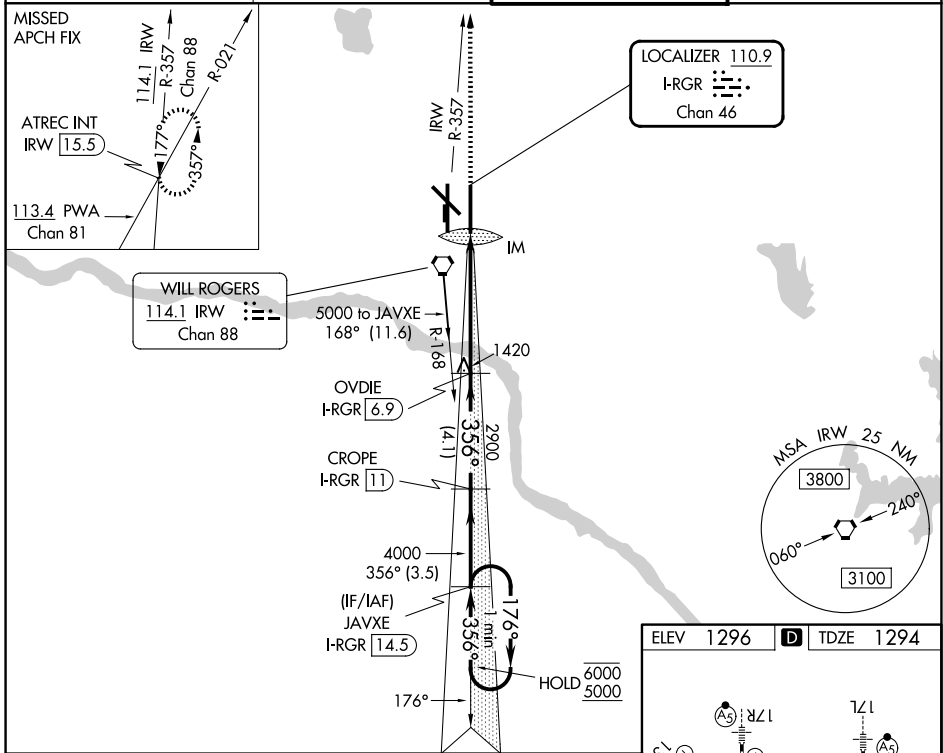
LOC/DME I-RGR 110.9 Chan 46	APP CRS 356°	Rwy Ldg 9802 TDZE 1294 Apt Elev 1296
---	------------------------	---

ILS RWY 35R (CAT II)

OKC WILL ROGERS INTL (OKC)

DME required. ASR Simultaneous approach authorized.	ALSF-2 	MISSED APPROACH: Climb to 5000 on heading 356° and on IRW VORTAC R-357 to ATREC INT/IRW 1.5.5 DME and hold, continue climb-in-hold to 5000.
--	------------	---

D-ATIS 125.85	OKC CITY APP CON 124.6 266.8	ROGERS TOWER 119.35 269.45	GND CON 121.9 348.6
-------------------------	--	--------------------------------------	-------------------------------



CATEGORY	A	B	C	D
5-ILS 35R	RA 121/12 100 DA 1394			
CATEGORY II ILS - SPECIAL AIRCREW & AIRCRAFT CERTIFICATION REQUIRED				
REIL Rwy 13 and 31 TDZL/RCLS Rwy 35R MRL Rwy 13-31 HIRL Rwy 17L-35R and 17R-35L				

SC-1, 14 MAY 2026 to 11 JUN 2026

SC-1, 14 MAY 2026 to 11 JUN 2026