

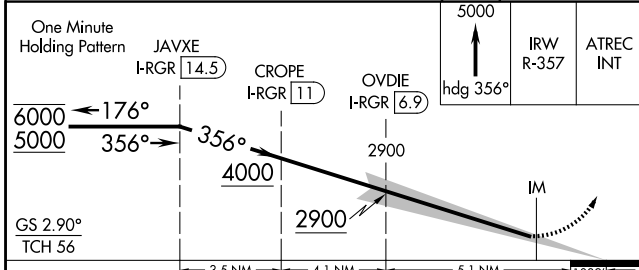
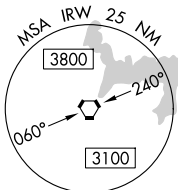
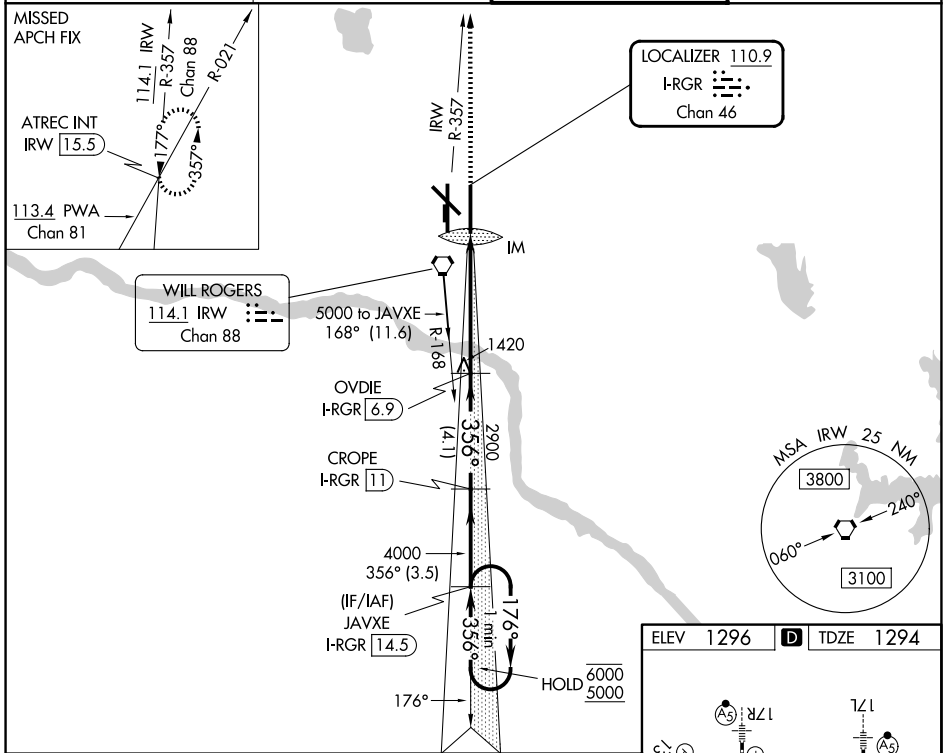
LOC/DME I-RGR <b>110.9</b> Chan <b>46</b>	APP CRS <b>356°</b>	Rwy Ldg TDZE Apt Elev	<b>9802</b> <b>1294</b> <b>1296</b>
---	------------------------	-----------------------------	---

# ILS RWY 35R (SA CAT I)

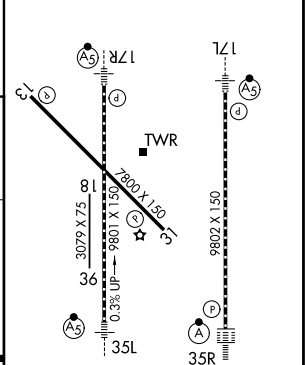
OKC WILL ROGERS INTL (OKC)

DME required.	ALSIF-2	MISSED APPROACH: Climb to 5000 on heading 356° and on IRW VORTAC R-357 to ATREC INT/IRW 15.5 DME and hold, continue climb-in-hold to 5000.
ASR Simultaneous approach authorized. Requires specific OPSPEC, MSPEC, or LOA approval and use of HUD to DH.		

D-ATIS <b>125.85</b>	OKE CITY APP CON <b>124.6 266.8</b>	ROGERS TOWER <b>119.35 269.45</b>	GND CON <b>121.9 348.6</b>
-------------------------	--	--------------------------------------	-------------------------------



ELEV 1296	<b>D</b> TDZE 1294
-----------	--------------------



CATEGORY	A	B	C	D
S-ILS 35R	RA 178/14		150 DA 1444	

**SA CATEGORY I ILS - SPECIAL AIRCREW & AIRCRAFT CERTIFICATION REQUIRED**

REIL Rwy 13 and 31  
TDZL/RCLS Rwy 35R  
MIRL Rwy 13-31  
HIRL Rwy 17L-35R and 17R-35L

SC-1, 14 MAY 2026 to 11 JUN 2026

SC-1, 14 MAY 2026 to 11 JUN 2026