


LOC/DME I-LIK <b>110.7</b> Chan <b>44</b>	APP CRS <b>356°</b>	Rwy Ldg TDZE <b>1276</b> Apt Elev <b>1296</b>
---	------------------------	---

# ILS or LOC RWY 35L

OKC WILL ROGERS INTL (OKC)

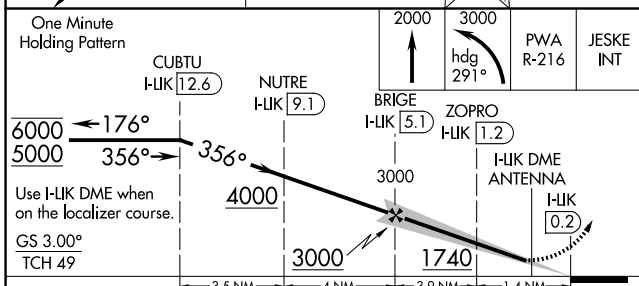
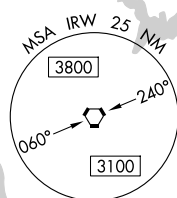
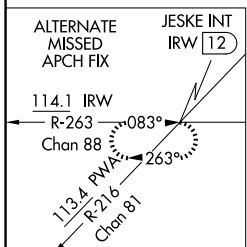
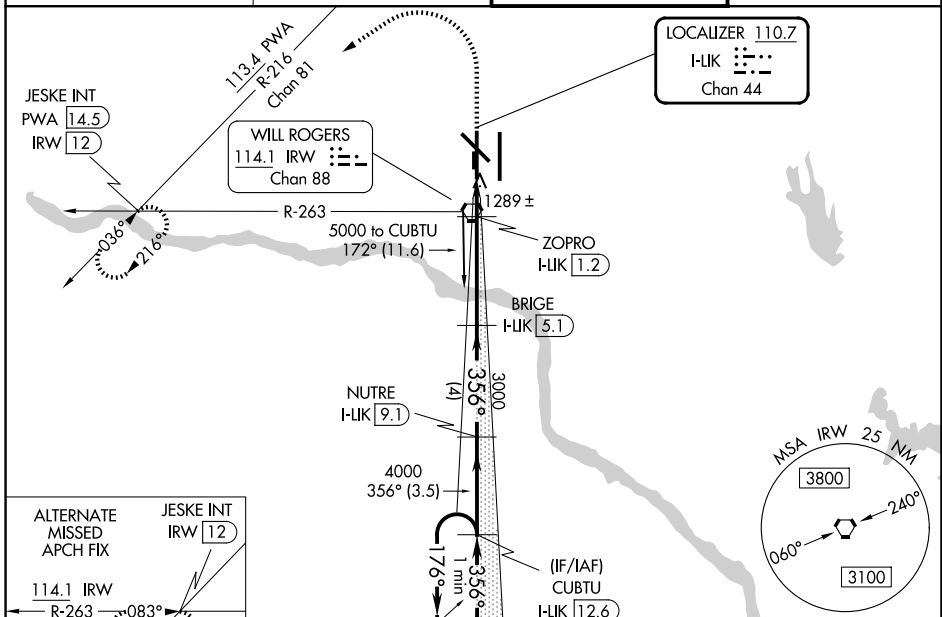
DME required.

Simultaneous approach authorized. For inop ALS, increase S-ILS 35L Cat E visibility to RVR 4000 and S-LOC 35L Cats C, D, and E visibility to RVR 5500.  
\* RVR 1800 authorized with use of FD or AP or HUD to DA.

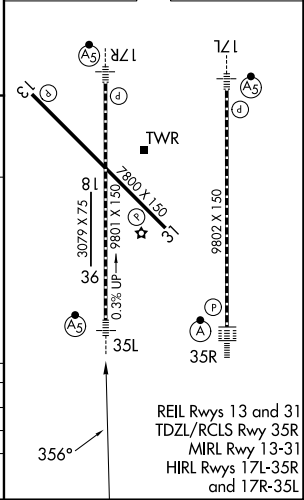
MALSR 

MISSED APPROACH: Climb to 2000 then climbing left turn to 3000 on heading 291° and on PWA VOR/DME R-216 to JESKE INT/PWA 14.5 DME and hold.

D-ATIS <b>125.85</b>	OKC CITY APP CON <b>124.6 266.8</b>	ROGERS TOWER <b>119.35 269.45</b>	GND CON <b>121.9 348.6</b>
-------------------------	--	--------------------------------------	-------------------------------



ELEV 1296	<b>D</b> TDZE 1276
-----------	--------------------



CATEGORY	A	B	C	D	E
S-ILS 35L*	1476/24 200 (200-½)				
S-LOC 35L	1640/24	364 (400-½)	1640/35		364 (400-¾)
CIRCLING	1740-1 444 (500-1)	1760-1 464 (500-1)	1960-1¾ 664 (700-1¾)	2000-2¼ 704 (800-2¼)	2240-3 944 (1000-3)

REIL Rwy 13 and 31  
TDZL/RCLS Rwy 35R  
MIRL Rwy 13-31  
HIRL Rwy 17L-35R  
and 17R-35L

SC-1, 14 MAY 2026 to 11 JUN 2026

SC-1, 14 MAY 2026 to 11 JUN 2026