


RNAV (RNP) Z RWY 35R

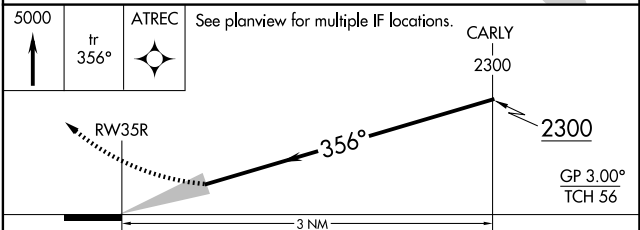
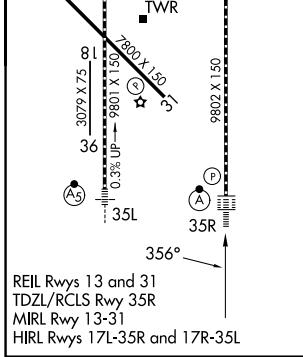
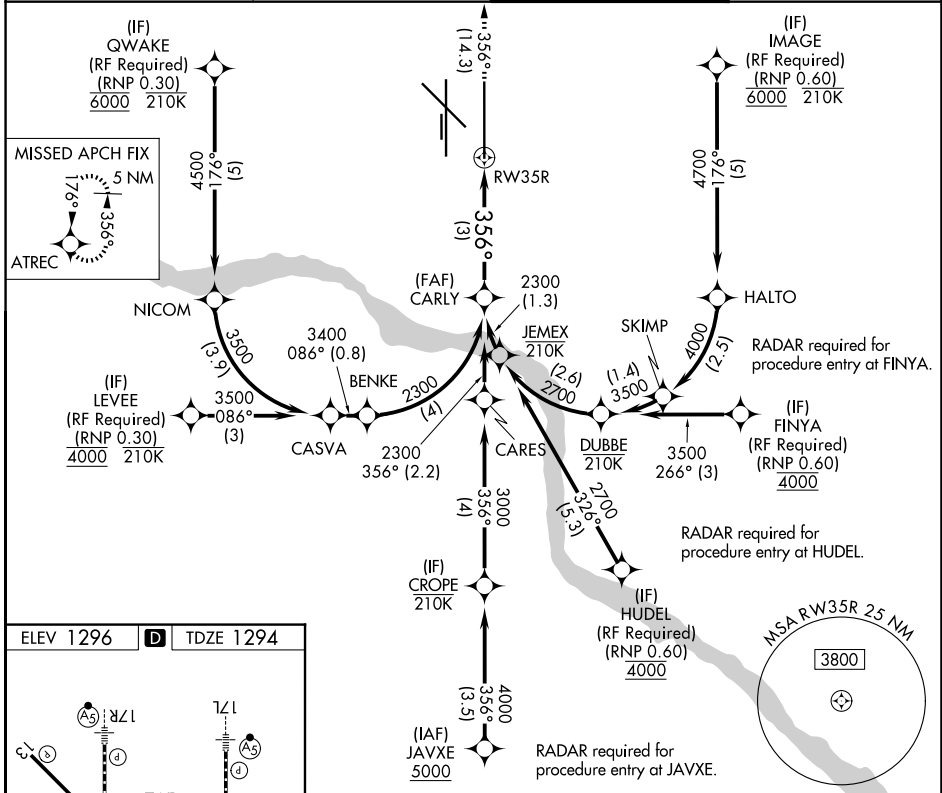
OKC WILL ROGERS INTL (OKC)

APP CRS 356°	Rwy Ldg 9802
	TDZE 1294
	Apt Elev 1296

ASR For uncompensated Baro-VNAV systems, procedure NA below -12°C (11°F) or above 54°C (130°F). GPS required. Simultaneous approach authorized with Rwy 35L. Use of FD or AP providing RNAV track guidance required during simultaneous operations.

ALS-F2

MISSED APPROACH: Climb to 5000 on track 356° to ATREC and hold, continue climb-in-hold to 5000.

D-ATIS 125.85	OKE CITY APP CON 124.6 266.8	ROGERS TOWER 119.35 269.45	GND CON 121.9 348.6
-------------------------	--	--------------------------------------	-------------------------------



CATEGORY	A	B	C	D
RNP 0.16 DA		1570/24	276 (300-½)	
RNP 0.30 DA		1674/39	380 (400-¾)	

AUTHORIZATION REQUIRED

SC-1, 14 MAY 2026 to 11 JUN 2026

SC-1, 14 MAY 2026 to 11 JUN 2026