

VOR IRW 114.1 Chan 88	APP CRS 190°	Rwy Ldg TDZE 1287 Apt Elev 1296
-------------------------------------------	------------------------	-----------------------------------------------------

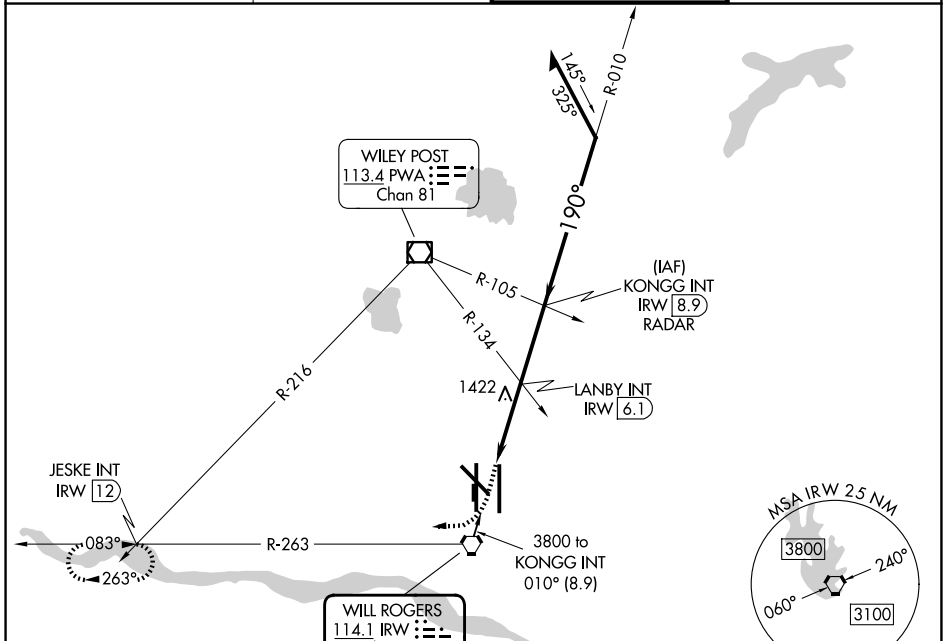
VOR RWY 17L

OKC WILL ROGERS INTL (OKC)

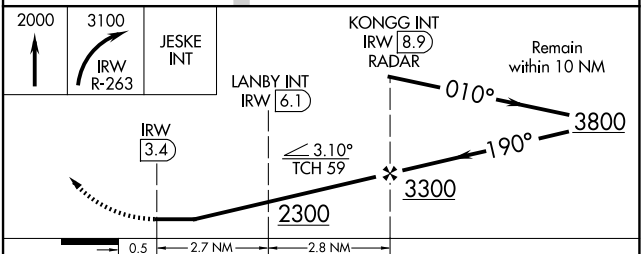
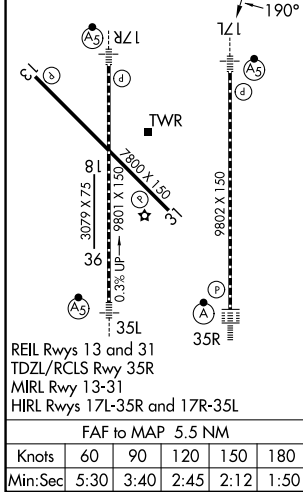
⚠ Inop table does not apply to S-17L Cats B, C, D, and E. Cat E procedure turn NA. For inop ALS, increase LANBY Fix Minimums S-17L visibilities ASR Cats A and B to RVR 5000, and Cats C, D and E to RVR 6000.

MALSR MISSED APPROACH: Climb to 2000 then climbing right turn to 3100 on IRW VORTAC R-263 to JESKE INT/12 IRW DME and hold.

D-ATIS 125.85	OKE CITY APP CON 124.6 266.8	ROGERS TOWER 119.35 269.45	GND CON 121.9 348.6
-------------------------	----------------------------------------	--------------------------------------	-------------------------------



ELEV 1296	D	TDZE 1287
-----------	----------	-----------



CATEGORY	A	B	C	D	E
S-17L	2300/40 1013(1100-¾)	2300-1 1013(1100-1)	2300-2 ½	1013 (1100-2 ½)	
CIRCLING	2300-1 ¼ 1004(1100-1 ¼)	2300-1 ½ 1004(1100-1 ½)	2300-3	1004 (1100-3)	
LANBY FIX MINIMUMS					
S-17L	1680/24	393 (400-½)	1680/40 393 (400-¾)	1680/50 393 (400-1)	1680-1 ½ 393 (400-1 ½)
CIRCLING	1760-1	464 (500-1)	1960-1 ¾ 664 (700-1 ¾)	2000-2 ¼ 704 (800-2 ¼)	2240-3 944 (1000-3)

SC-1, 14 MAY 2026 to 11 JUN 2026

SC-1, 14 MAY 2026 to 11 JUN 2026