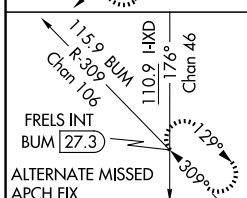
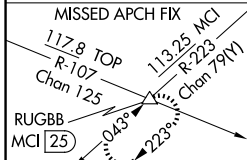
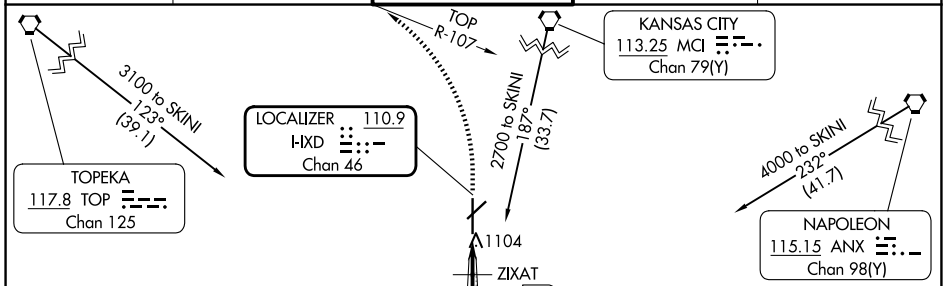


LOC/DME HXD <b>110.9</b> Chan 46	APP CRS <b>356°</b>	Rwy Ldg TDZE <b>7339</b> <b>1067</b>	Apt Elev <b>1087</b>
--	------------------------	--	-------------------------

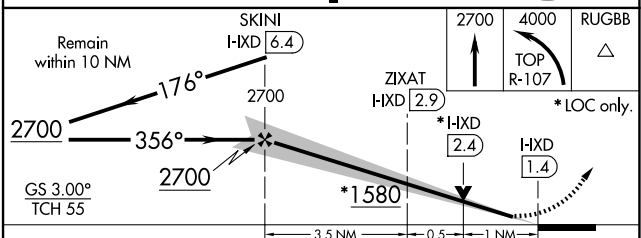
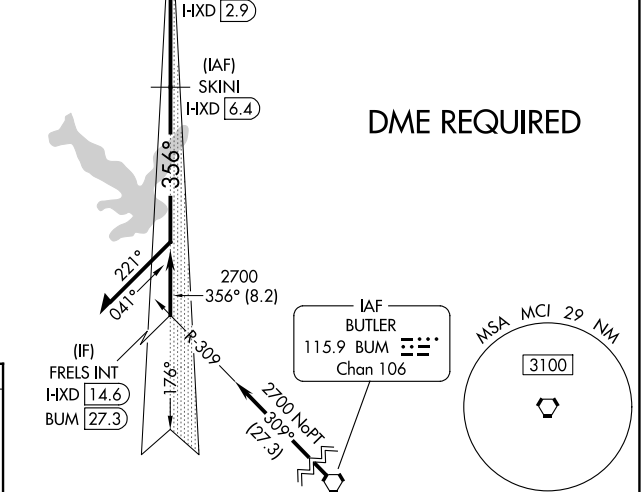
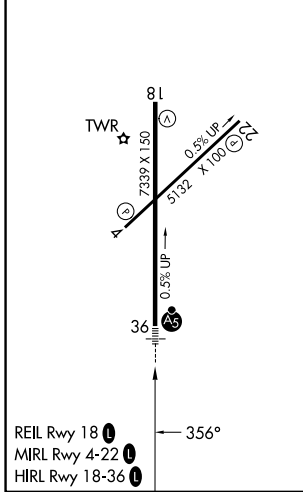
# ILS or LOC RWY 36

## NEW CENTURY AIRCENTER (IXD)

DME required. For inop ALS, increase S-LOC 36 Cat C/D visibility to 1 SM.		MALSR 	MISSED APPROACH: Climb to 2700 then climbing left turn to 4000 on TOP VORTAC R-107 to RUGBB/MCI 25 DME and hold.	
ASOS <b>135.325</b>	KANSAS CITY APP CON <b>118.9 251.075</b>	NEW CENTURY TOWER* <b>133.0 (CTAF) 0</b>	GND CON <b>124.3</b>	UNICOM <b>122.95</b>



ELEV 1087	TDZE 1067
-----------	-----------



CATEGORY	A	B	C	D
S-ILS 36	1267-1/2 200 (200-1/2)			
S-LOC 36	1420-1/2	353 (400-1/2)	1420-5/8	353 (400-5/8)
CIRCLING	1560-1	473 (500-1)	1580-1/2 493 (500-1/2)	1640-2 553 (600-2)

NC-2, 14 MAY 2026 to 11 JUN 2026

NC-2, 14 MAY 2026 to 11 JUN 2026