

WAAS CH 86439 W04A	APP CRS 043°	Rwy Ldg TDZE Apt Elev	5132 1080 1087
--	------------------------	-----------------------------	---

RNAV (GPS) RWY 4

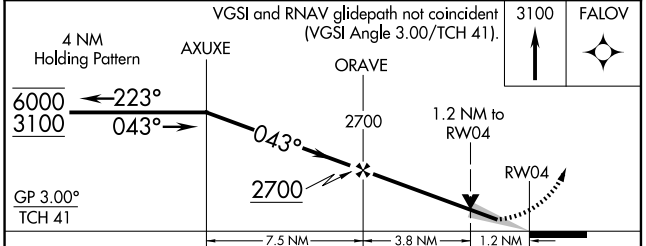
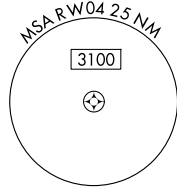
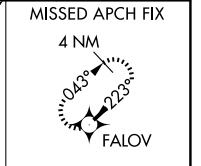
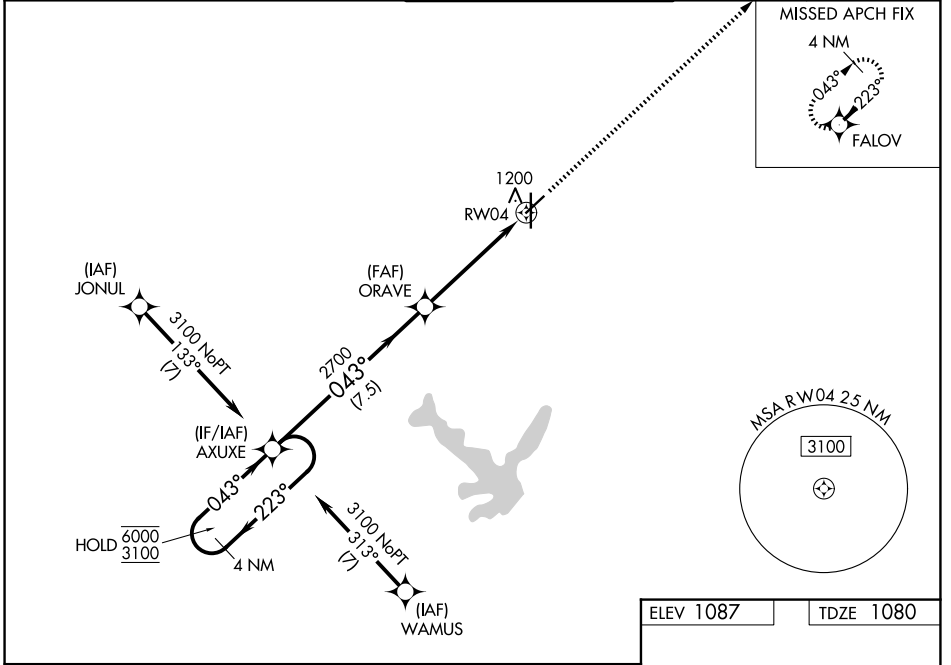
NEW CENTURY AIRCENTER (IXD)

RNP APCH - GPS.

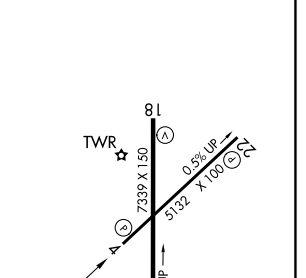
⚠ Baro-VNAV and VDP NA when using OJC altimeter setting. For uncompensated Baro-VNAV systems, LNAV/VNAV NA below -17°C or above 54°C. When local altimeter setting not received, use OJC altimeter setting; increase LPV DA to 1348 feet and LNAV/VNAV DA to 1448 feet and all MDA 20 feet; increase LNAV Cat C/D visibility 1/8 SM.

MISSED APPROACH: Climb to 3100 direct FALOW and hold.

ASOS 135.325	KANSAS CITY APP CON 118.9 251.075	NEW CENTURY TOWER ★ 133.0 (CTAF) 0	GND CON 124.3	UNICOM 122.95
------------------------	---	--	-------------------------	-------------------------



ELEV 1087	TDZE 1080
-----------	-----------



CATEGORY	A	B	C	D
LPV DA	1330-1 250 (300-1)			
LNAV/VNAV DA	1430-1¼ 350 (400-1¼)			
LNAV MDA	1500-1	420 (500-1)	1500-1½	420 (500-1½)
CIRCLING	1560-1	473 (500-1)	1580-1½	1640-2 553 (600-2)

REIL Rwy 18 **0**
MIRL Rwy 4-22 **0**
HIRL Rwy 18-36 **0**

NC-2, 14 MAY 2026 to 11 JUN 2026

NC-2, 14 MAY 2026 to 11 JUN 2026