

# ROYAL TWO DEPARTURE

AL-302 (FAA)

NEW CENTURY AIRCENTER (IXD)

OLATHE, KANSAS

NC-2, 14 MAY 2026 to 11 JUN 2026

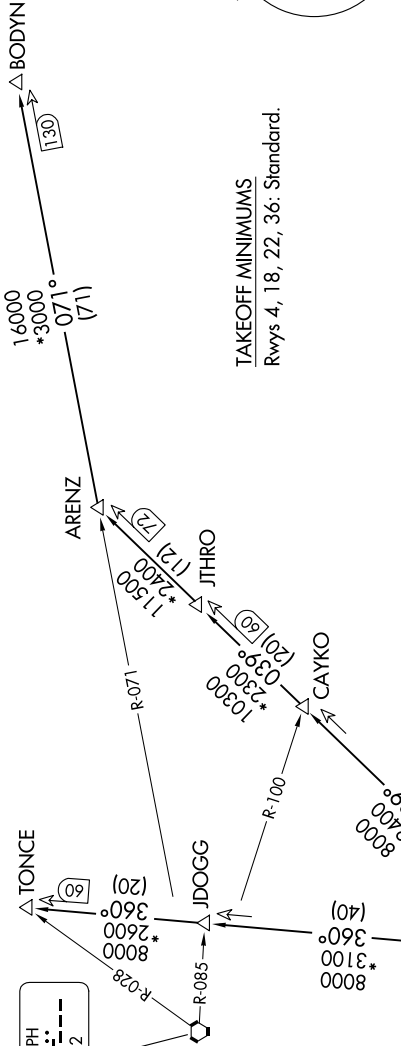
KANSAS CITY DEP CON  
118.9 251.075

ST. JOSEPH  
115.5 STJ  
Chan 102

KANSAS CITY  
113.25 MCI  
Chan 79(V)

**TOP ALTITUDE:  
10000**

RADAR and DME required.



TAKEOFF MINIMUMS  
Rwys 4, 18, 22, 36: Standard.

## DEPARTURE ROUTE DESCRIPTION

TAKEOFF ALL RUNWAYS: Climb on assigned heading for RADAR vectors to appropriate route. Maintain 10000, expect filed altitude 10 minutes after departure.

ARENZ TRANSITION (ROYAL2.ARENZ): From over MCI VORTAC on MCI R-039 to ARENZ.

BODYN TRANSITION (ROYAL2.BODYN): From over MCI VORTAC on MCI R-039 to ARENZ, then on STJ R-071 to BODYN.

TONCE TRANSITION (ROYAL2.TONCE): From over MCI VORTAC on MCI R-360 to TONCE.

NOTE: Chart not to scale.

NC-2, 14 MAY 2026 to 11 JUN 2026

# ROYAL TWO DEPARTURE

(ROYAL2.MCI) 05SEP24

OLATHE, KANSAS

NEW CENTURY AIRCENTER (IXD)