

(TIFTO8.MCI) 23278

# TIFTO EIGHT DEPARTURE

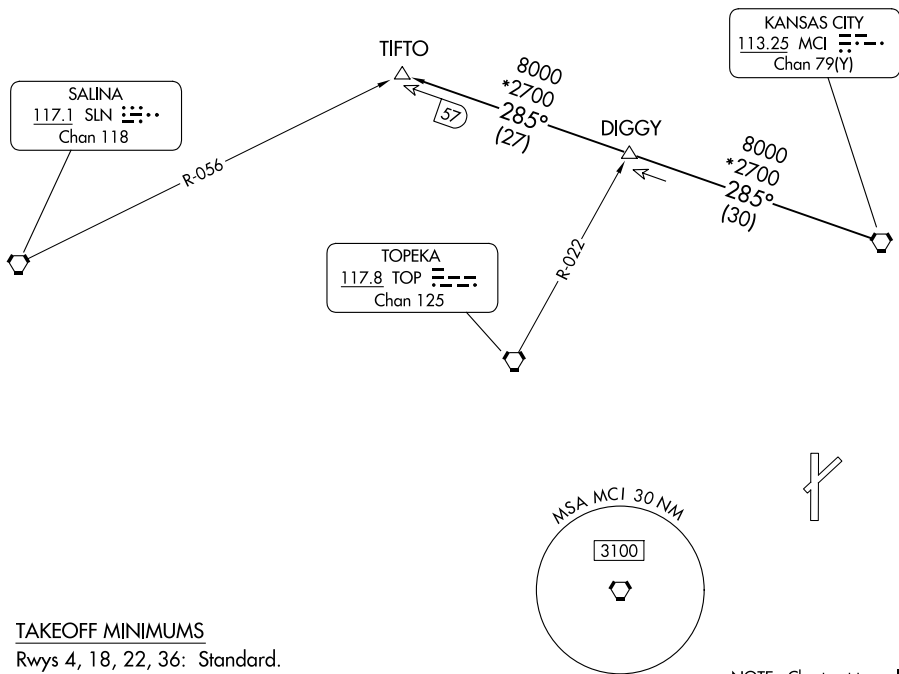
AL-302 (FAA)

NEW CENTURY AIRCENTER (IXD)  
OLATHE, KANSAS

**TOP ALTITUDE:  
10000**

RADAR and DME required.

KANSAS CITY DEP CON  
118.9 251.075



NC-2, 14 MAY 2026 to 11 JUN 2026

NC-2, 14 MAY 2026 to 11 JUN 2026

### TAKEOFF MINIMUMS

Rwys 4, 18, 22, 36: Standard.

NOTE: Chart not to scale.



### DEPARTURE ROUTE DESCRIPTION

TAKEOFF ALL RUNWAYS: Climb on assigned heading for RADAR vectors to appropriate route. Maintain 10000, expect filed altitude 10 minutes after departure.

TIFTO TRANSITION (TIFTO8.TIFTO): From over MCI VORTAC on MCI R-285 to TIFTO.

# TIFTO EIGHT DEPARTURE

(TIFTO8.MCI) 05OCT23

OLATHE, KANSAS  
NEW CENTURY AIRCENTER (IXD)