

RNAV (RNP) Z RWY 14L

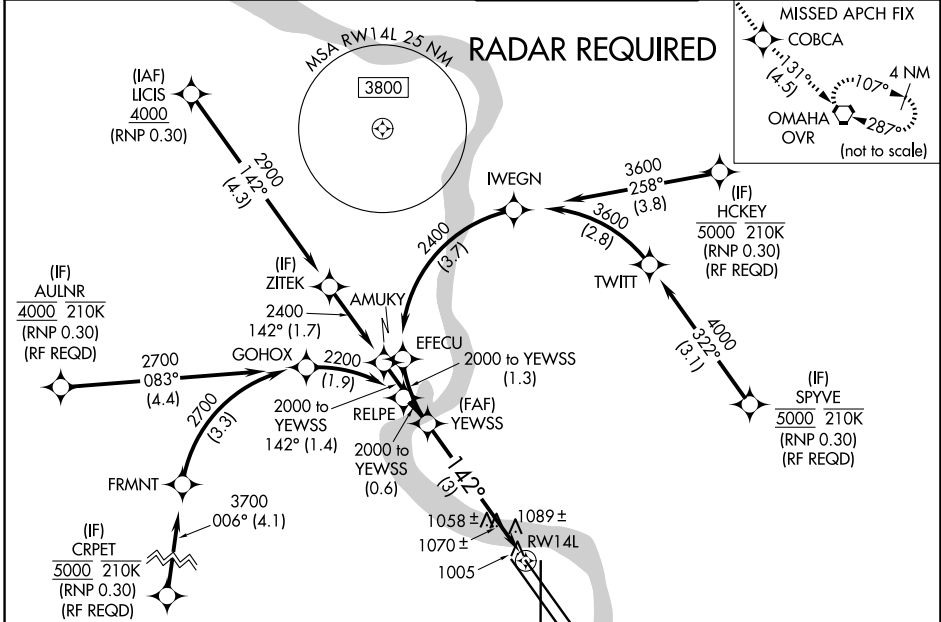
EPPLEY AIRFIELD (OMA)

APP CRS 142°	Rwy Ldg TDZE Apt Elev	8500 984 985
------------------------	-----------------------------	---

▼ For uncompensated Baro-VNAV systems, procedure NA below -17°C (2°F) or above 54°C (130°F). For inoperative ALS, increase RNP 0.15 all Cats visibility to 1½ and RNP 0.30 all Cats visibility to 1¾. GPS required.

MALSRL
MISSED APPROACH: Climb to 3000 on track 142° to COBCA and on track 131° to OVR VORTAC and hold.

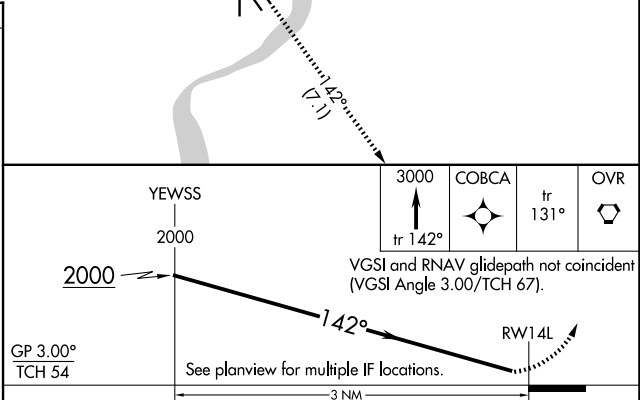
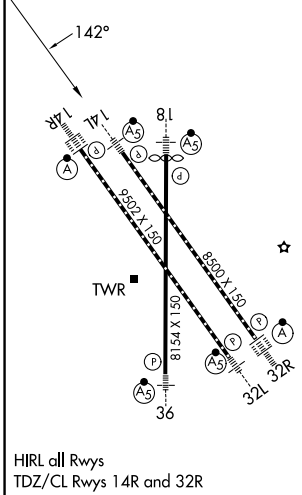
D-ATIS 120.4	OMAHA APP CON 135.875 354.05	OMAHA TOWER 132.1 256.9	GND CON 121.9
------------------------	--	-----------------------------------	-------------------------



NC-2, 14 MAY 2026 to 11 JUN 2026

NC-2, 14 MAY 2026 to 11 JUN 2026

ELEV 985	D	TDZE 984
----------	----------	----------



GP 3.00°	TCH 54	3000	COBCA	tr 131°	OVR
CATEGORY	A	B	C	D	
RNP 0.15 DA	1335/40 351 (400-¾)				
RNP 0.30 DA	1395/45 411 (500-¾)				

AUTHORIZATION REQUIRED