

APP CRS **322°**  
 Rwy Ldg **9502**  
 TDZE **981**  
 Apt Elev **985**

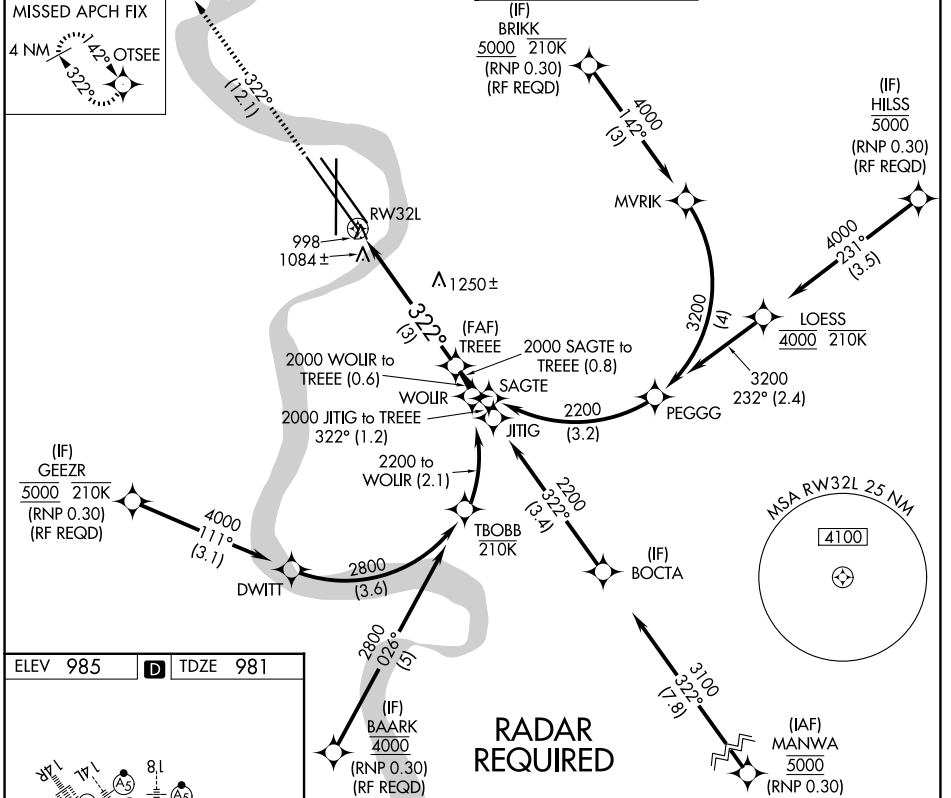
# RNAV (RNP) Z RWY 32L

EPPLEY AIRFIELD (OMA)

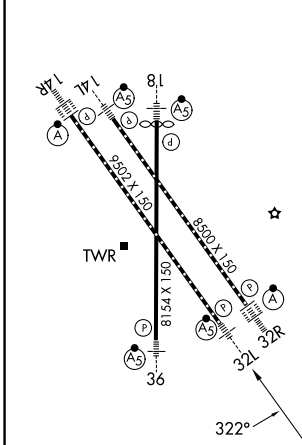
**⚠** For uncompensated Baro-VNAV systems, procedure NA below -19°C (-2°F) or above 54°C (130°F). When VGSI inop, procedure NA at night.  
 For inoperative ALS, increase RNP 0.15 all Cats visibility to 1¼ SM and RNP 0.30 all Cats visibility to 2¼ SM. GPS required.

MALSR MISSED APPROACH: Climb to 3300 on track 322° to OTSEE and hold.

D-ATIS **120.4**      OMAHA APP CON **135.875 354.05**      OMAHA TOWER **132.1 256.9**      GND CON **121.9**



ELEV 985    **D**    TDZE 981



HIRL all Rwys  
 TDZ/CL Rwys 14R and 32R

**RADAR REQUIRED**

3300 OTSEE    VGSI and RNAV glidepath not coincident (VGSI Angle 3.00/TCH 51).    TREEE 2000

tr 322°

RWY 32L

322°

See planview for multiple IF locations.

3 NM

GP 3.00°  
TCH 57

CATEGORY	A	B	C	D
RNP 0.15 DA		1359/50	378 (400-1)	
RNP 0.30 DA		1624-1¾	643 (700-1¾)	

**AUTHORIZATION REQUIRED**

NC-2, 14 MAY 2026 to 11 JUN 2026

NC-2, 14 MAY 2026 to 11 JUN 2026