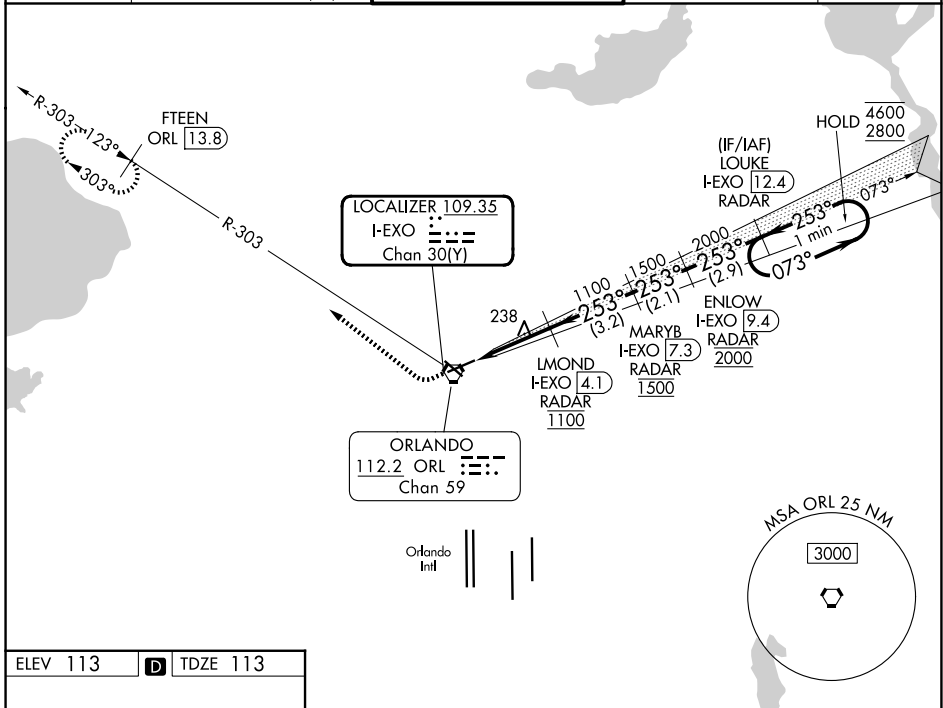


LOC/DME I-EXO 109.35 Chan 30(Y)	APP CRS 253°	Rwy Ldg 6004 TDZE 113 Apt Elev 113
--	------------------------	---

ILS or LOC RWY 25

ORLANDO EXEC (ORL)

DME or RADAR required.		MISSED APPROACH: Climb to 600 then climbing right turn to 1700 on heading 315° and on ORL VORTAC R-303 to FTEEN/ORL 13.8 DME and hold.		
<p>⚠ Circling Rwy 31 NA at night. In minimum visibility conditions, bright lights on highway ½ mile south of airport may be mistaken for runway lights.</p>				
ATIS 127.25	ORLANDO APP CON 119.4 351.9 (7) 125,225 351.9 (25)	EXECUTIVE TOWER ★ 118.7(CTAF) 0 239.0	GND CON 121.4 239.0	UNICOM 122.95



SE-3, 14 MAY 2026 to 11 JUN 2026

SE-3, 14 MAY 2026 to 11 JUN 2026

ELEV 113	D	TDZE 113			
REIL Rws 13 and 31 HIRL Rws 7-25 and 13-31 FAF to MAP 3 NM					
Knots	60	90	120	150	180
Min:Sec	3:00	2:00	1:30	1:12	1:00

600 1700 hdg 315°		ORL R-303	FTEEN ORL 13.8	One Minute Holding Pattern	
		ENLOW I-EXO 9.4 RADAR	LOUKE I-EXO 12.4 RADAR	4600	2800
		LMOND I-EXO 4.1 RADAR	MARYB I-EXO 7.3 RADAR	2000	1100
		I-EXO 2.2	I-EXO 1.2	1500	1100
		1.1 NM	1.9 NM	3.2 NM	2.1 NM
CATEGORY	A	B	C	D	
S-ILS 25	313-¾		200 (200-¾)		
S-LOC 25	500-1	387 (400-1)		500-1½	387 (400-1½)
CIRCLING	580-1	680-1	860-2¼	860-2½	
	467 (500-1)	567 (600-1)	747 (800-2¼)	747 (800-2½)	