

LOC I-ORL 109.9	APP CRS 073°	Rwy Ldg 5604 TDZE 109 Apt Elev 113
---------------------------	------------------------	---

ILS or LOC RWY 7

ORLANDO EXEC (ORL)

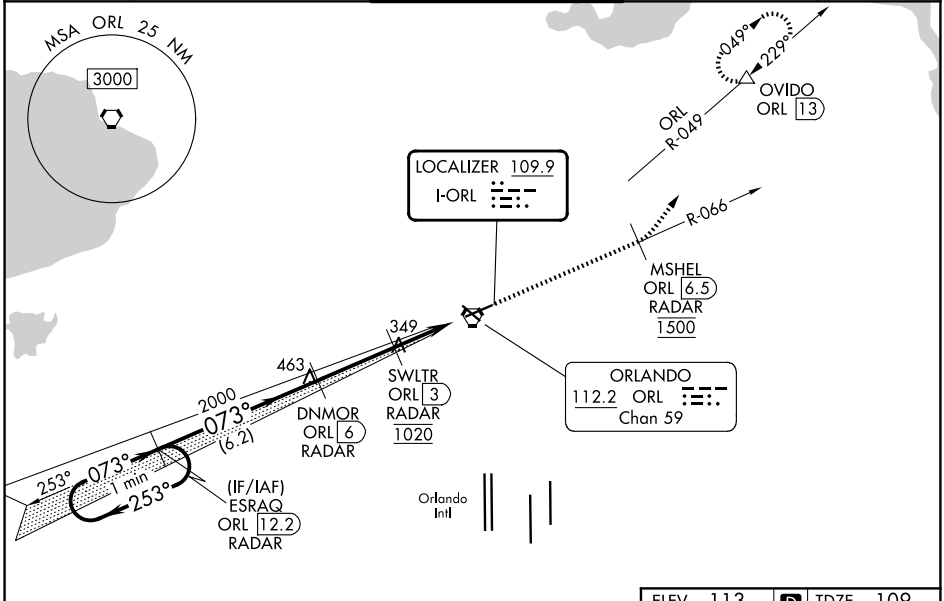
RADAR required for procedure entry. DME or RADAR required.

⚠ Circling Rwy 31 NA at night. In minimum visibility conditions, bright lights on highway 1/2 mile south of airport may be mistaken for runway lights. For inop ALS, increase S-ILS 7 all Cats visibility to RVR 4500 and S-LOC 7 Cats A/B visibility to RVR 5500. Rwy 7 helicopter visibility reduction below 3/4 SM NA. Autopilot coupled approach NA below 320.



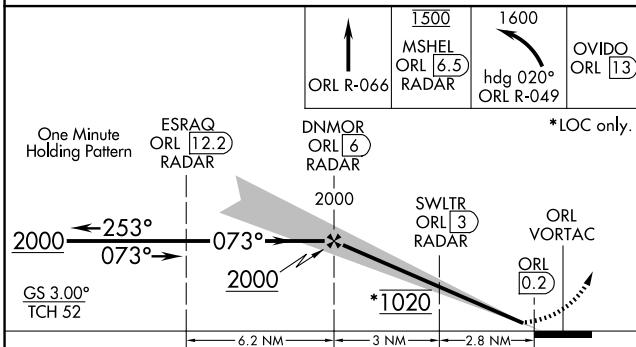
MISSED APPROACH: Climb on ORL VORTAC R-066 to cross MSHEL/ORL 6.5 DME/RADAR at 1500 then climbing left turn to 1600 on heading 020° and ORL VORTAC R-049 to OVIDO/ORL 13 DME and hold.

ATIS 127.25	ORLANDO APP CON 119.4 351.9 (7) 125.225 351.9 (25)	EXECUTIVE TOWER ★ 118.7 (CTAF) 239.0	GND CON 121.4 239.0	UNICOM 122.95
-----------------------	--	--	-------------------------------	-------------------------



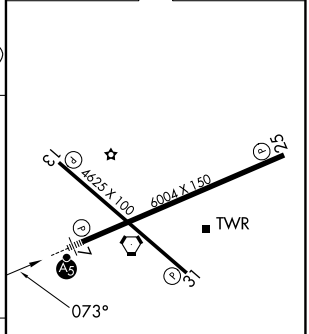
SE-3, 14 MAY 2026 to 11 JUN 2026

SE-3, 14 MAY 2026 to 11 JUN 2026



ELEV 113	D TDZE 109
----------	-------------------

CATEGORY	A	B	C	D
S-ILS 7	391/40 282 (300-3/4)			
S-LOC 7	660/40	551 (600-3/4)	660/60	551 (600-1 1/4)
CIRCLING	660-1 547 (600-1)	680-1 567 (600-1)	860-2 1/4 747 (800-2 1/4)	860-2 1/2 747 (800-2 1/2)



REIL Rwys 13 and 31 ⚠				
HIRL Rwys 7-25 and 13-31 ⚠				
FAF to MAP 5.8 NM				
Knots	60	90	120	150 180
Min:Sec	5:48	3:52	2:54	2:19 1:56