

(TOLLZ2.TOLLZ) 25359

AL-305 (FAA)

ORLANDO EXEC (ORL)  
ORLANDO, FLORIDA

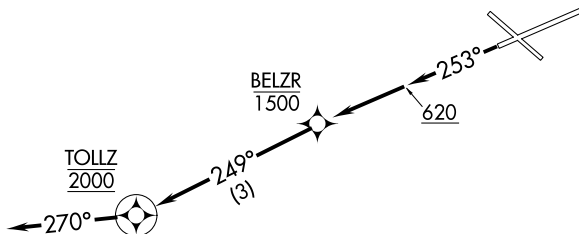
# TOLLZ TWO DEPARTURE (RNAV)

ORLANDO DEP CON  
119.4 351.9  
ATIS  
127.25  
CLNC DEL  
128.45  
CLNC DEL  
119.775 (When twr closed)  
GND CON  
121.4 239.0  
EXECUTIVE TOWER ★  
118.7 239.0

RNAV 1 - DME/DME/IRU or GPS required.

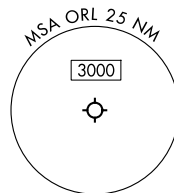
RADAR required.

**TOP ALTITUDE:**  
**2000**



### TAKEOFF MINIMUMS

Rwy 25: Standard with minimum climb of 500' per NM to 620.



NOTE: Chart not to scale.



### DEPARTURE ROUTE DESCRIPTION

TAKEOFF RUNWAY 25: Climb on heading 253° to 620, then direct to cross BELZR at or below 1500, then on track 249° to cross TOLLZ at 2000, thence. . . .

. . . on heading 270°, maintain 2000. Expect clearance to filed altitude within 10 minutes after departure.

## TOLLZ TWO DEPARTURE (RNAV)

(TOLLZ2.TOLLZ) 21MAR24

ORLANDO, FLORIDA  
ORLANDO EXEC (ORL)

SE-3, 14 MAY 2026 to 11 JUN 2026

SE-3, 14 MAY 2026 to 11 JUN 2026