

LOC I-PMD 110.7	APP CRS 254°	Rwy Ldg TDZE 12002 2503	Apt Elev 2543
---------------------------	------------------------	---------------------------------------	-------------------------

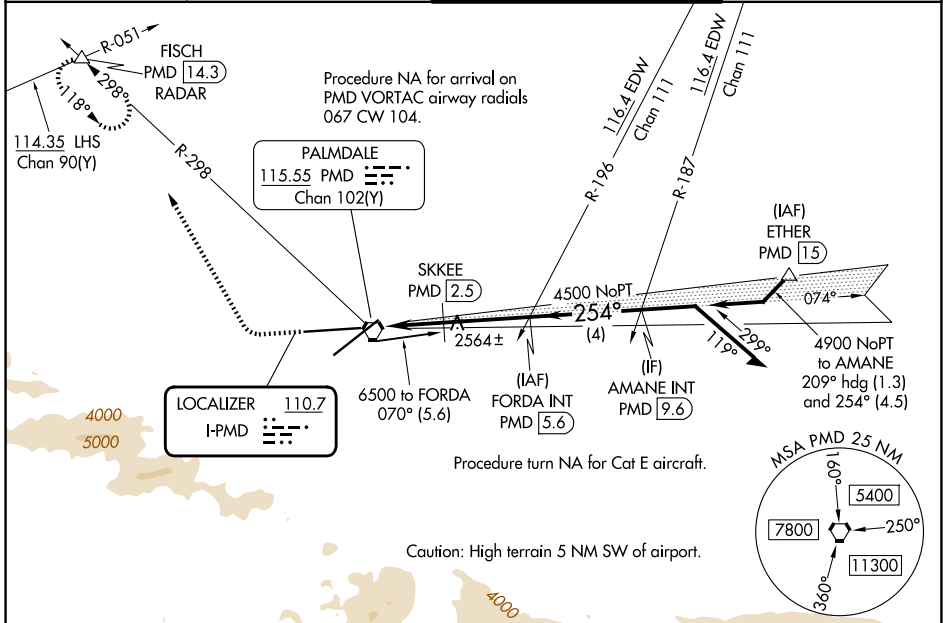
ILS Z or LOC Z RWY 25

PALMDALE USAF PLANT 42 (PMD)

⚠ Circling NA for Cats C, D, and E south of Rws 4 and 25. DME from PMD VORTAC. Simultaneous reception of I-PMD and PMD DME required.

⚠ MISSED APPROACH: Climb to 3000 then climbing right turn to 6700 on heading 318° and on PMD VORTAC R-298 to FISCH INT/PMD 14.3 DME/RADAR and hold, continue climb-in-hold to 6700.

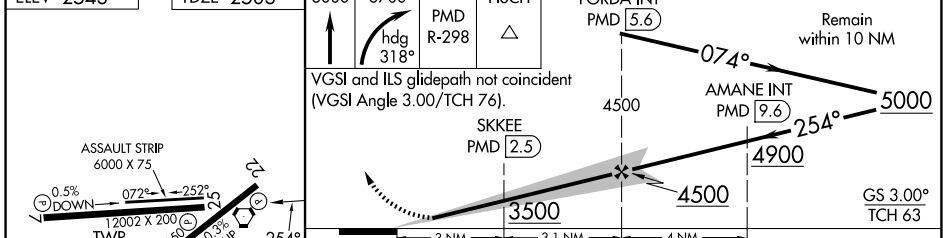
ATIS 118.275	JOSHUA APP CON 124.55 363.0	PALMDALE TOWER * 123.7 (CTAF) 0 317.6	GND CON 121.9 317.6
------------------------	---------------------------------------	--------------------------------------------------------	-------------------------------



SW-3, 14 MAY 2026 to 11 JUN 2026

SW-3, 14 MAY 2026 to 11 JUN 2026

ELEV 2543	TDZE 2503	3000	6700	FISCH	FORDA INT
-----------	-----------	------	------	-------	-----------



HIRL Rws 4-22 and 7-25 FAF to MAP 6.1 NM Knots: 60 90 120 150 180 Min:Sec: 6:06 4:04 3:03 2:26 2:02	CATEGORY A S-ILS 25 S-LOC 25 CIRCLING	CATEGORY B 2703-3/4 3500-1 1/4 3500-1 1/2 3500-1 1/4 3500-1 1/2	CATEGORY C 200 (200-3/4) 3500-3 3500-3 3500-3	CATEGORY D 997 (1000-3) 3740-3 1197 (1200-3)	CATEGORY E 3760-3 217 (1300-3)	
	SKKEE FIX MINIMUMS (DME REQUIRED)					
	S-LOC 25	2820-1	317 (300-1)	2820-7/8	317 (300-7/8)	
	CIRCLING	3020-1	3060-1	3140-1 1/2	3740-3	3760-3
		477 (500-1)	517 (600-1)	597 (600-1 1/2)	1197 (1200-3)	217 (1300-3)