

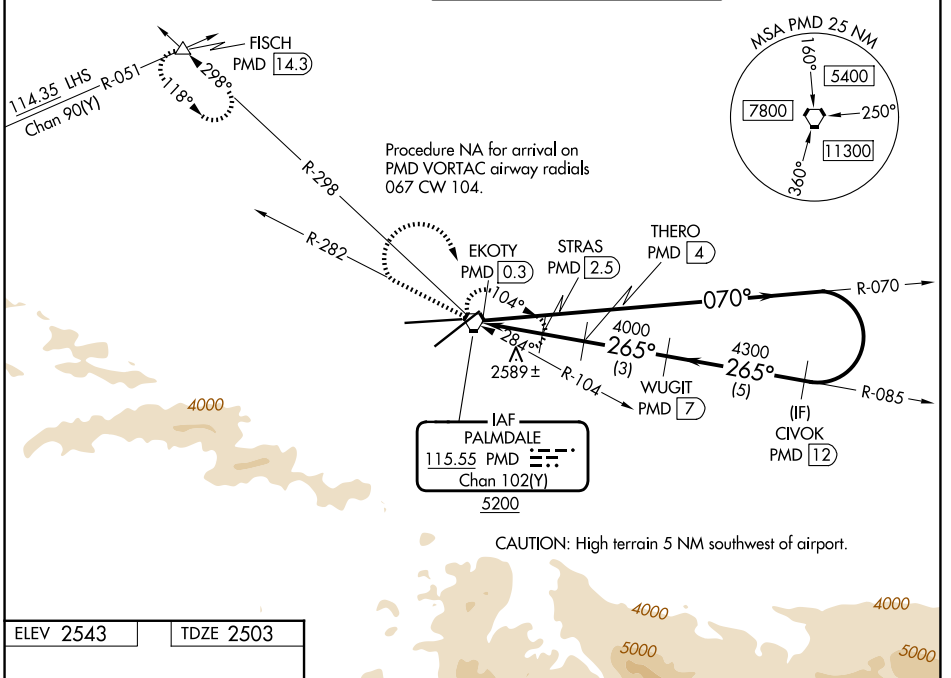
VORTAC PMD 115.55 Chan 102 (Y)	APP CRS 265°	Rwy Ldg TDZE Apt Elev 12002 2503 2543
--	------------------------	---

VOR or TACAN Z RWY 25

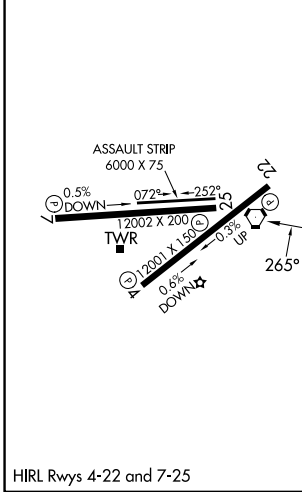
PALMDALE USAF PLANT 42 (PMD)

DME required.		MISSED APPROACH: Climb to 5000 on PMD VORTAC R-282 then climbing right turn to 7000 direct PMD VORTAC and hold. (TACAN aircraft climbing right turn to 6700 on PMD VORTAC R-298 to FISCH INT/ 14.3 DME and hold SE, left turn, 298° inbound, continue climb-in-hold to 6700).	
<p>▼ Circling NA for Cats C, D, and E south of Rwys 4 and 25.</p>			

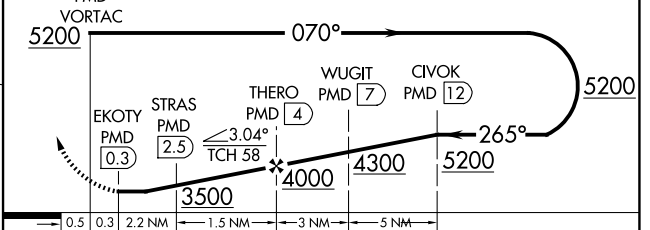
ATIS 118.275	JOSHUA APP CON 124.55 363.0	PALMDALE TOWER ★ 123.7 (CTAF) 0 317.6	GND CON 121.9 317.6
------------------------	---------------------------------------	--	-------------------------------



ELEV 2543	TDZE 2503
------------------	------------------



5000 ↑ PMD R-282	7000 ↘	PMD ◻	VGSI and descent angles not coincident (VGSI Angle 3.00/TCH 76).	Remain within 15 NM of PMD VORTAC
------------------------	-----------	----------	---	-----------------------------------



CATEGORY	A	B	C	D	E
S-25	2840-1 337 (300-1)				
CIRCLING	3020-1 477 (500-1)	3060-1 517 (600-1)	3140-1½ 597 (600-1½)	3740-3 1197 (1200-3)	3760-3 1217 (1300-3)

SW-3, 14 MAY 2026 to 11 JUN 2026

SW-3, 14 MAY 2026 to 11 JUN 2026