

# HI-ILS Y or LOC Y RWY 14L

LOC I-TYF <b>111.5</b>	APCH CRS <b>138°</b>	Rwy Idg 10,008
		TDZE 14
		Arpt Elev 17

[USAF]

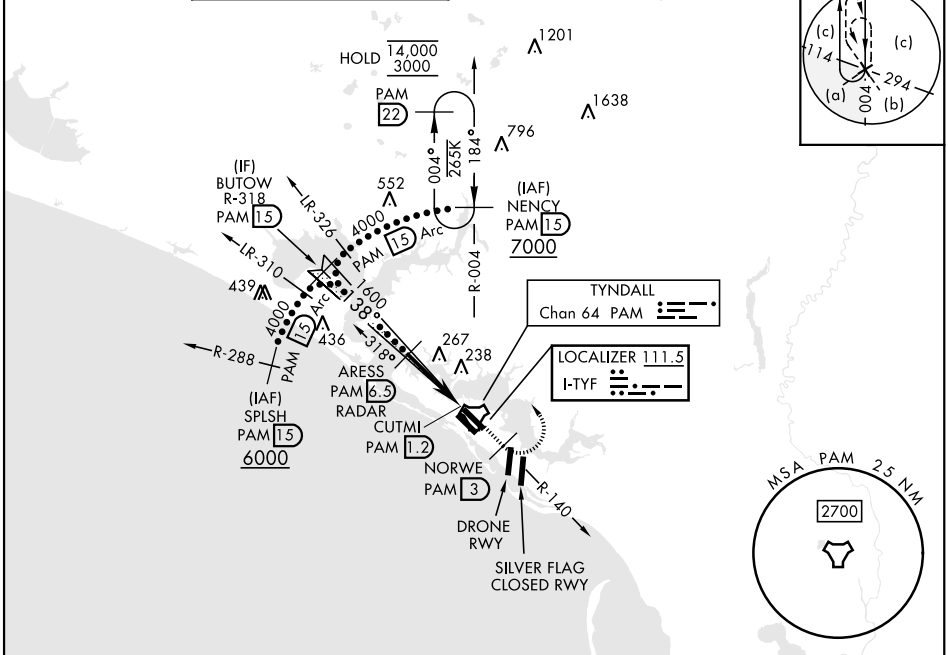
TYNDALL AFB (KPAM)

DME or RADAR required.

ALSF-1  
A1

MISSED APPROACH: Track outbound PAM TACAN R-140 to 3 DME (NORWE), then turn left to join PAM R-004 to 15 DME (NENCY) and hold. Maintain 3000.

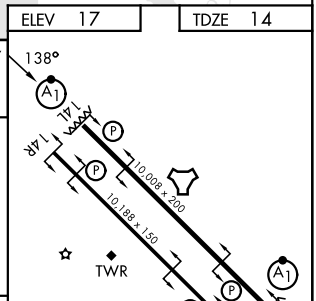
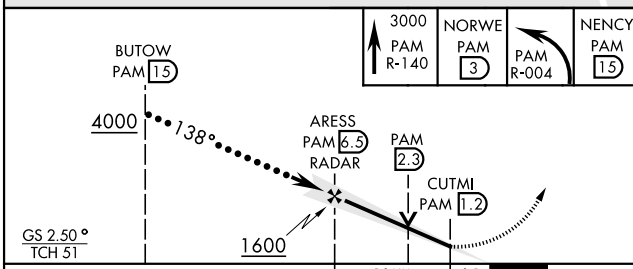
ATIS ★ <b>254.4</b>	APP CON <b>125.2 392.1</b> (N abv 5000') <b>120.825 379.3</b> (N blw 5000') <b>124.15 338.35</b> (S abv 5000') <b>119.775 317.45</b> (S blw 5000')	TOWER ★ <b>133.95 263.15</b>	GND CON <b>121.9 259.3</b>	ASR/PAR
------------------------	--	---------------------------------	-------------------------------	---------



SE-3, 14 MAY 2026 to 11 JUN 2026

SE-3, 14 MAY 2026 to 11 JUN 2026

EMERG SAFE ALT 100 NM 3300



CATEGORY	C		D		E
	S-ILS 14L *	214/24	200	(200-1/2)	
S-LOC 14L **	500/50	486	(500-1)		
CIRCLING	540-1 1/2		580-2	563	(600-2)
	523 (600-1 1/2)				

ELEV	17	TDZE	14		
Recommend Rwy 14L-32R for apch end engagement of A-Gear.					
HIRL all rwys					
FAF to MAP 5.3 NM					
Knots	120	140	160	180	200
Min:Sec	2:39	2:16	1:59	1:46	1:35

# HI-ILS Y or LOC Y RWY 14L