

HI-TACAN Y RWY 14L

TACAN PAM Chan 64	APCH CRS 130°	Rwy ldg 10,008 TDZE 14 Arpt Elev 17
--------------------------	----------------------	--

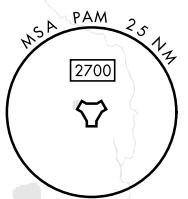
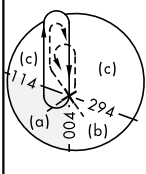
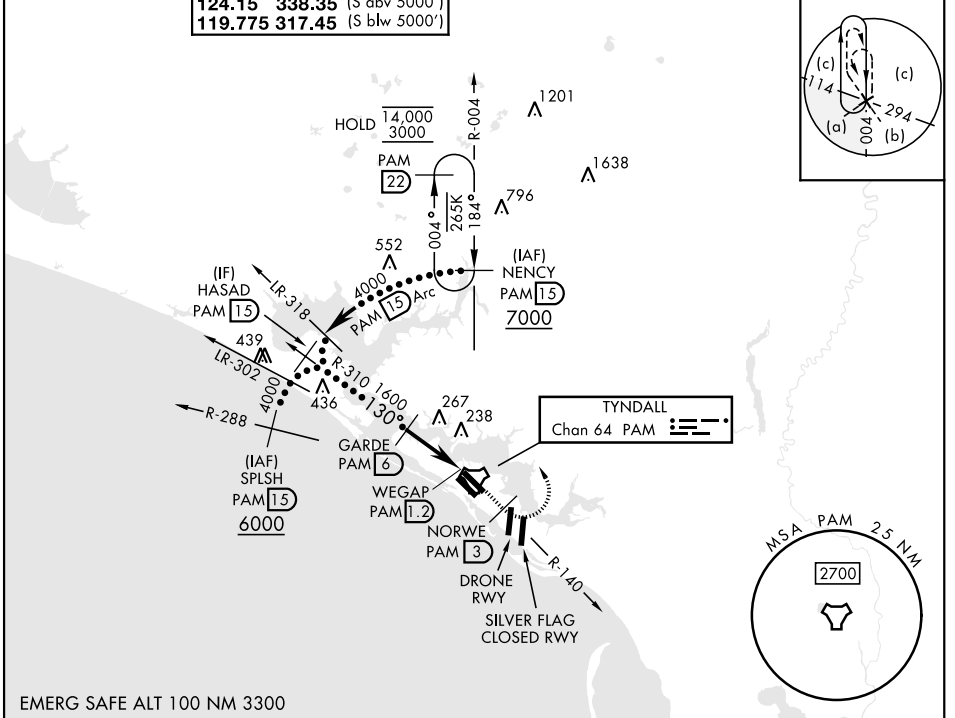
[USAF]

TYNDALL AFB (KPAM)

▼ * When ALS inop, increase vis to 1½ miles.

ALSF-1 MISSED APPROACH: Track outbound PAM TACAN R-140 to 3 DME (NORWE), then turn left to join PAM R-004 to 15 DME (NENCY) and hold. Maintain 3000.

ATIS ★ 254.4	APP CON 125.2 392.1 (N abv 5000') 120.825 379.3 (N blw 5000') 124.15 338.35 (S abv 5000') 119.775 317.45 (S blw 5000')	TOWER ★ 133.95 263.15	GND CON 121.9 259.3	ASR/PAR
------------------------	--	---------------------------------	-------------------------------	---------

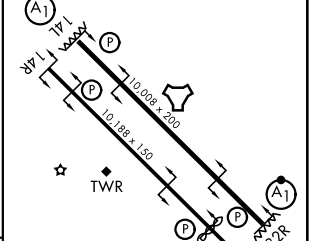
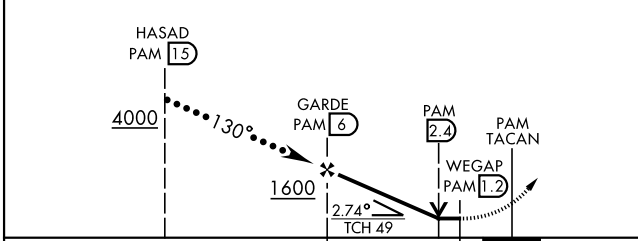


SE-3, 14 MAY 2026 to 11 JUN 2026

SE-3, 14 MAY 2026 to 11 JUN 2026

EMERG SAFE ALT 100 NM 3300

VGSI and descent angles not coincident (VGSI Angle 2.50/TCH 49).	3000 PAM R-140	NORWE PAM 3	NENCY PAM 15	ELEV 17	TDZE 14
--	----------------	-------------	--------------	---------	---------



CATEGORY	C	D	E
S-14L*	500/50	486	(500-1)
CIRCLING	540-1½ 523 (600-1½)	580-2	563 (600-2)

Recommend Rwy 14L-32R for apch end engagement of A-Gear.
HIRL all rwys

HI-TACAN Y RWY 14L