

PANAMA CITY, FLORIDA

ILS Z or LOC Z RWY 32R

LOC I-PAM 110.1	APCH CRS 318°	Rwy Ldg TDZE Arpt Elev 10,008 14 17
---------------------------	-------------------------	---

[USAF]

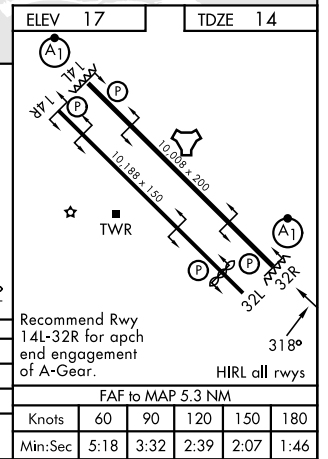
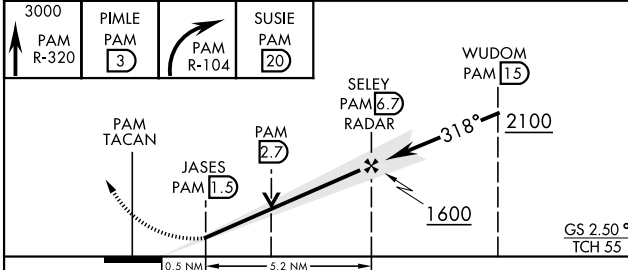
TYNDALL AFB (KPAM)

DME or RADAR required	ALSF-1 	MISSED APPROACH: Track outbound PAM R-320 to 3 DME (PIMLE), then turn right to join PAM R-104 to 20 DME (SUSIE) and hold. Maintain 3000.
-----------------------	------------	--

ATIS ★ 254.4	APP CON 125.2 392.1 (N abv 5000') 120.825 379.3 (N blw 5000') 124.15 338.35 (S abv 5000') 119.775 317.45 (S blw 5000')	TOWER ★ 133.95 263.15	GND CON 121.9 259.3	ASR/PAR
------------------------	--	---------------------------------	-------------------------------	---------



EMERG SAFE ALT 100 NM 3300	ELEV 17	TDZE 14
----------------------------	---------	---------



CATEGORY	A	B	C	D	E
S-ILS 32R*	214/24		200	(200-½)	
S-LOC 32R**	540/24	526 (600-½)	540/55		526 (600-1)
CIRCLING	540-1	523 (600-1)	540-1½	523 (600-1½)	580-2 563 (600-2)

FAF to MAP 5.3 NM					
Knots	60	90	120	150	180
Min:Sec	5:18	3:32	2:39	2:07	1:46

PANAMA CITY, FLORIDA
Amdt 5 27NOV25

30°04'N-85°35'W

TYNDALL AFB (KPAM)

ILS Z or LOC Z RWY 32R

SE-3, 14 MAY 2026 to 11 JUN 2026

SE-3, 14 MAY 2026 to 11 JUN 2026