

PANAMA CITY, FLORIDA

RNAV (GPS) RWY 14L

WAAS CH 71271 W14A	APCH CRS 138°	Rwy ldg 10,008 TDZE 14 Arprt Elev 17
--------------------------	------------------	--------------------------------------------

(USAF)

TYNDALL AFB (KPM)

RNP APCH - GPS

- ▼ * When ALS inop, increase RVR to 40, vis to 3/4 mile.
- ** When ALS inop, increase RVR to 45, vis to 7/8 mile.
- *** When ALS inop, increase CAT AB RVR to 55, vis to 1 mile;
CAT CDE vis to 1 3/8 miles.

ALS-F-1

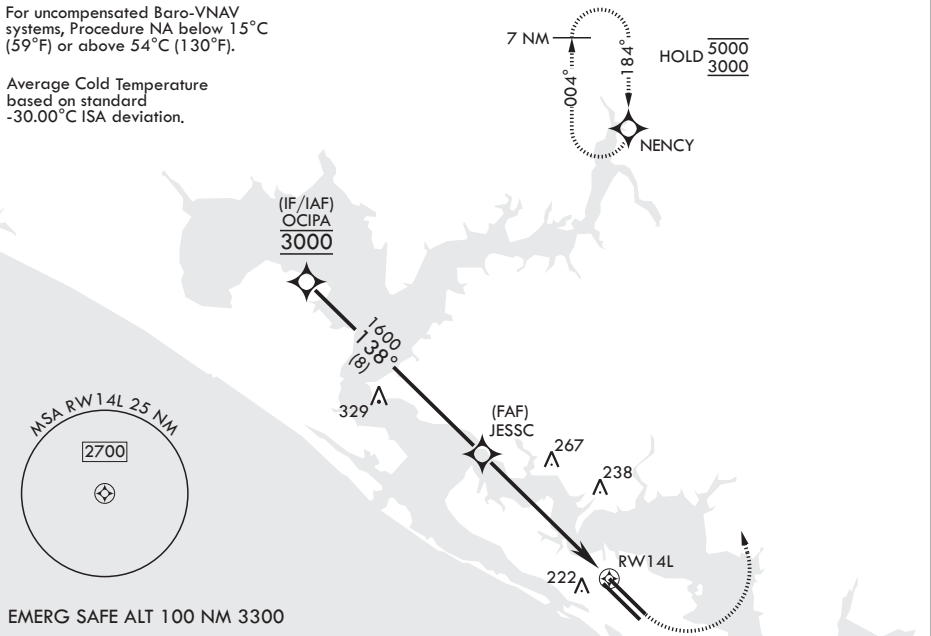


MISSED APPROACH: Climb to 600 then climbing left turn to 3000 direct NENCY and hold.

ATIS* 254.4	APP CON/DEP CON* 119.775 317.45 BLW 5000' 124.15 338.35 ABV 5000'	TOWER* 133.95 263.15	GND CON 121.9 259.3	ASR/PAR
----------------	-------------------------------------------------------------------------	-------------------------	------------------------	---------

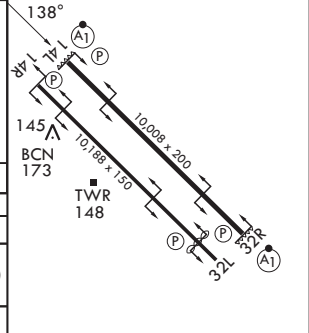
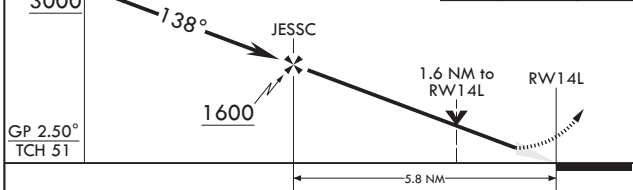
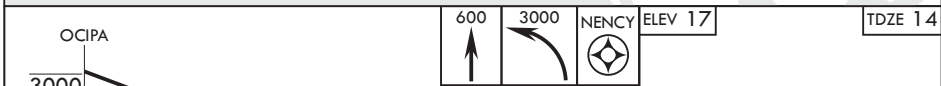
For uncompensated Baro-VNAV systems, Procedure NA below 15°C (59°F) or above 54°C (130°F).

Average Cold Temperature based on standard -30.00°C ISA deviation.



SE-3, 14 MAY 2026 to 11 JUN 2026

SE-3, 14 MAY 2026 to 11 JUN 2026



CATEGORY	A	B	C	D	E
LPV DA*	214/24		200	(200-½)	
LNAV/VNAV DA**	276/24 262 (300-½)	287/24 273 (300-½)	295/24 281 (300-½)	306/24	292 (300-½)
LNAV MDA***	500/24	486 (500-½)	500/50	486	(500-1)
CIRCLING	540-1	523 (600-1)	540-1½ 523 (600-1½)	580-2	563 (600-2)

HIRL all rwys
Recommend Rwy 14L-32R for
apch end engagement of A-Gear.

PANAMA CITY, FLORIDA

30°04'N - 85°35'W

TYNDALL AFB (KPM)

Amdt 5 27NOV25

RNAV (GPS) RWY 14L