

PANAMA CITY, FLORIDA

RNAV (GPS) RWY 32L

WAAS CH 71279 W32B	APCH CRS 319°	Rwy ldg TDZE Arprt Elev	9134 17 17
--	-------------------------	-------------------------------	---------------------------------------

(USAF)

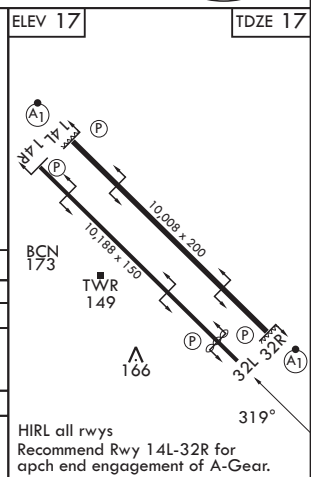
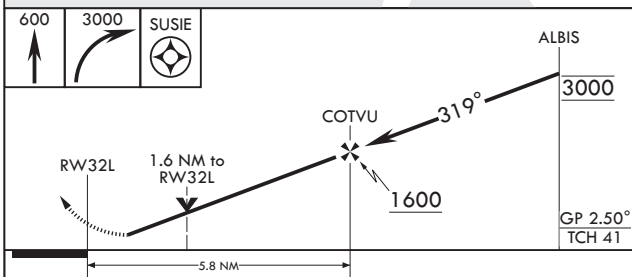
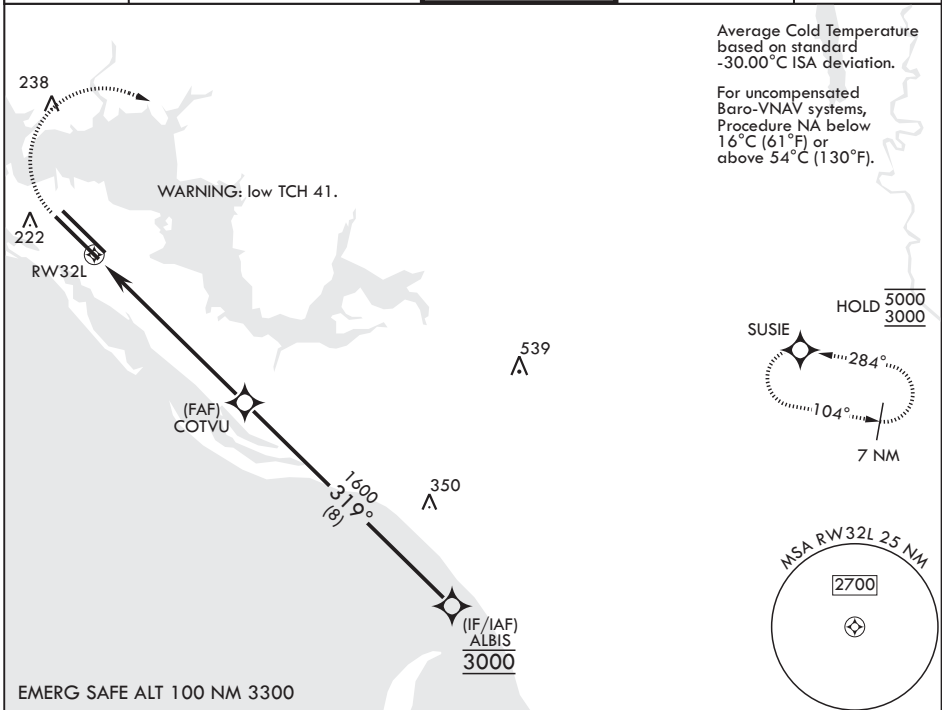
TYNDALL AFB (KPAM)

RNP APCH-GPS MISSED APPROACH: Climb to 600 then climbing right turn to 3000 direct SUSIE and hold.

ATIS ★ 254.4	APP CON/DEP CON★ 119.775 317.45 BLW 5000' 124.15 338.35 ABV 5000'	TOWER ★ 133.95 263.15	GND CON 121.9 259.3	ASR/PAR
------------------------	---	---------------------------------	-------------------------------	---------

Average Cold Temperature based on standard -30.00°C ISA deviation.

For uncompensated Baro-VNAV systems, Procedure NA below 16°C (61°F) or above 54°C (130°F).



CATEGORY	A	B	C	D	E
LPV DA	217- ³ / ₄		200	(200- ³ / ₄)	
LNAV/VNAV DA	333- ⁷ / ₈ 316 (400- ⁷ / ₈)	344-1 327 (400-1)	352-1 335 (400-1)	363-1	346 (400-1)
LNAV MDA	480-1	463 (500-1)	480-1 ¹ / ₂	463	(500-1 ¹ / ₂)
CIRCLING	540-1	523 (600-1)	540-1 ¹ / ₂ 523 (600-1 ¹ / ₂)	580-2	563 (600-2)

HIRL all rwys
Recommend Rwy 14L-32R for
apch end engagement of A-Gear.

PANAMA CITY, FLORIDA

30°04'N - 85°35'W

TYNDALL AFB (KPAM)

Amdt 4 19FEB26

RNAV (GPS) RWY 32L

SE-3, 14 MAY 2026 to 11 JUN 2026

SE-3, 14 MAY 2026 to 11 JUN 2026