

PATUXENT RIVER, MARYLAND

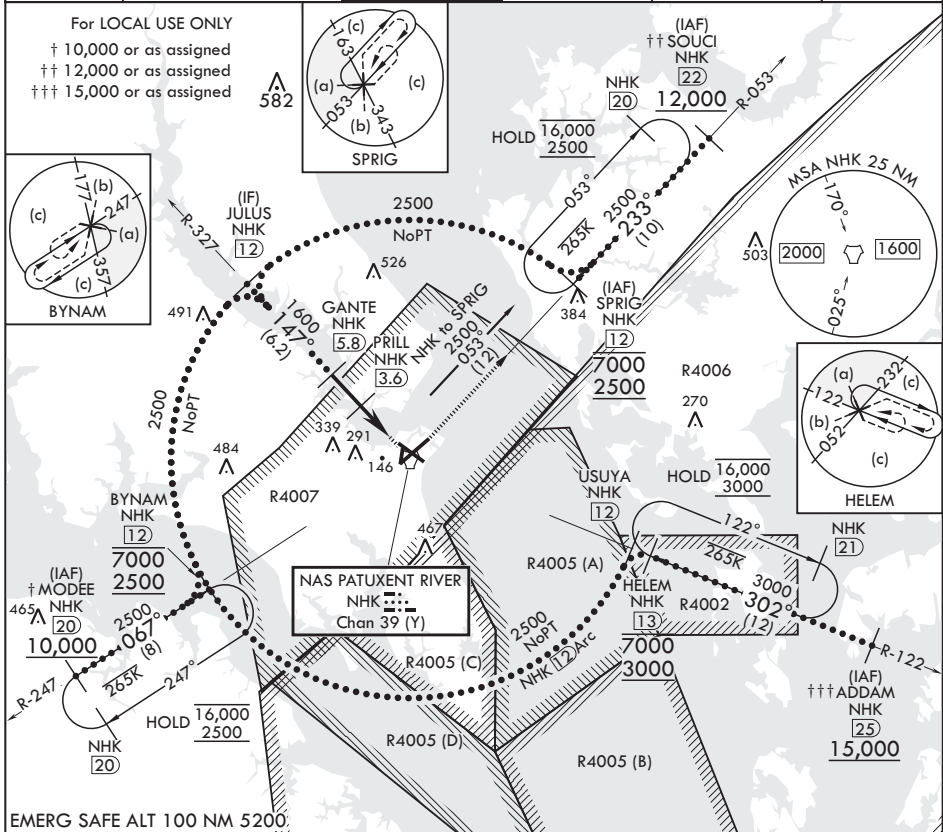
HI-TACAN Y RWY 14

TACAN NHK Chan 39 (Y)	APCH CRS 147°	Rwy ldg TDZE 27	9732
		Arpt Elev 39	

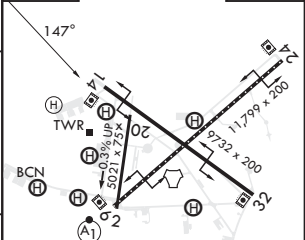
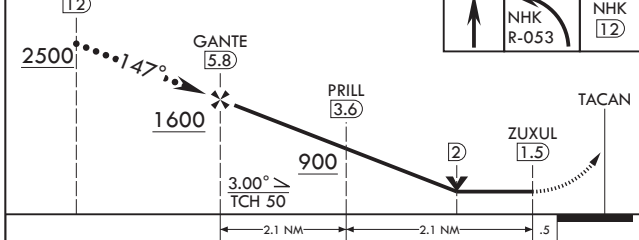
(USN) PATUXENT RIVER NAS (TRAPNELL FLD) (KNHK)

MISSED APPROACH: Climb to 500, then climbing left turn to 2500 on NHK TACAN R-053 to SPRIG and hold.

ATIS 322.425	APP CON/DEP CON* 121.0 250.3	TOWER 123.7 343.65	GND CON 120.6 336.4	CLNC DEL 135.2 316.125	ASR/PAR
--------------	------------------------------	--------------------	---------------------	------------------------	---------



JULUS 12	GANTE 5.8	PRILL 3.6	TACAN	SPRIG 12	ELEV 39	TDZE 27
----------	-----------	-----------	-------	----------	---------	---------



CATEGORY	C	D	E
S-14	400-1	373	(400-1)
CIRCLING	620-1½ 581 (600-1½)	700-2 661 (700-2)	820-2¾ 781 (800-2¾)

HIRL Rwy 6-24 and 14-32
 TDZL/CL Rwy 6

PATUXENT RIVER, MARYLAND

38°17'N - 76°25'W PATUXENT RIVER NAS (TRAPNELL FLD) (KNHK)

Amdt 1 07AUG25

HI-TACAN Y RWY 14

NE-3, 14 MAY 2026 to 11 JUN 2026

NE-3, 14 MAY 2026 to 11 JUN 2026