

PATUXENT RIVER, MARYLAND

ILS or LOC RWY 6

LOC/DME I-NHK 108.7 Chan 24	APCH CRS 059°	Rwy ldg 11,799 TDZE 39 Arprt Elev 39
-------------------------------------------------	-------------------------	-----------------------------------------------------------------

[USN]

PATUXENT RIVER NAS (TRAPNELL FIELD) (KNHK)

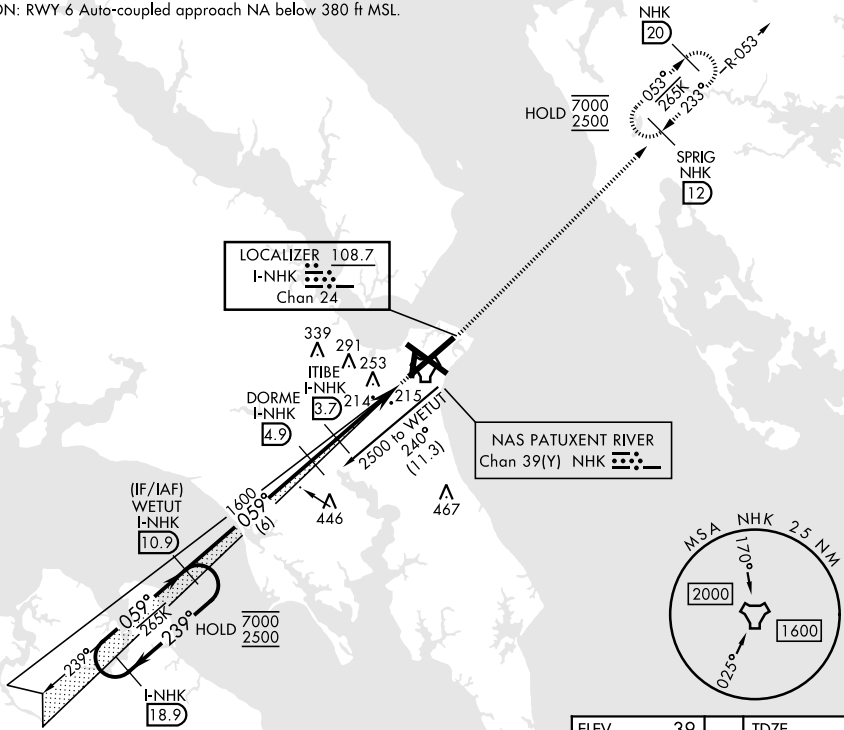
▼ * When ALS inop, increase vis to ¾ mile.
** When ALS inop, increase CAT AB vis to 1 mile;
CAT CDE vis to 1½ miles.



MISSED APPROACH: Climb to 2500 heading 059° and intercept NHK TACAN R-053 to SPRIG and hold.

ATIS 322.425	APP/DEP CON * 121.0 250.3	TOWER 123.7 343.65	GND CON 120.6 336.4	CLNC DEL 135.2 316.125	ASR/PAR
------------------------	-------------------------------------	------------------------------	-------------------------------	----------------------------------	---------

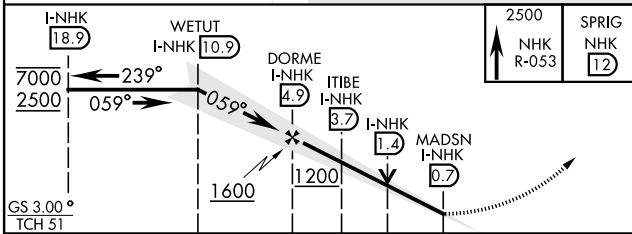
CAUTION: RWY 6 Auto-coupled approach NA below 380 ft MSL.



NE-3, 14 MAY 2026 to 11 JUN 2026

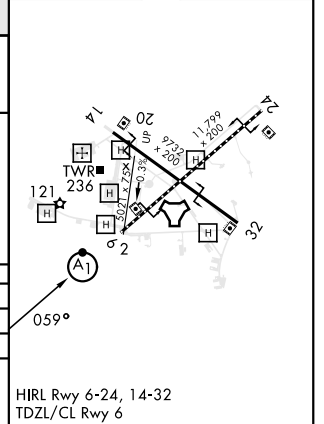
NE-3, 14 MAY 2026 to 11 JUN 2026

EMERG SAFE ALT 100 NM 5200



ELEV	39	TDZE	39
------	----	------	----

CATEGORY	A	B	C	D	E
S-ILS 6 *	239-½		200	(200-½)	
S-LOC 6 **	480-½	441 (500-½)	480-⅞	441 (500-⅞)	
CIRCLING	520-1	560-1	620-1½	700-2	820-2¾
	481 (500-1)	521 (600-1)	581 (600-1½)	661 (700-2)	781 (800-2¾)



PATUXENT RIVER, MARYLAND

38° 17' N-76° 25' W

PATUXENT RIVER NAS (TRAPNELL FIELD) (KNHK)

Amdt 1 07AUG25

ILS or LOC RWY 6