

PATUXENT RIVER, MARYLAND

RNAV (GPS) RWY 32

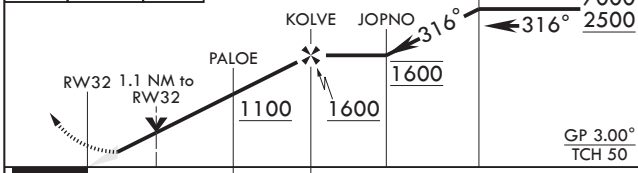
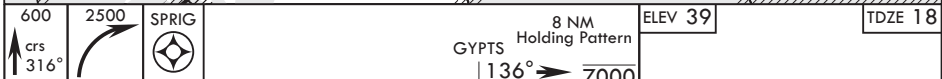
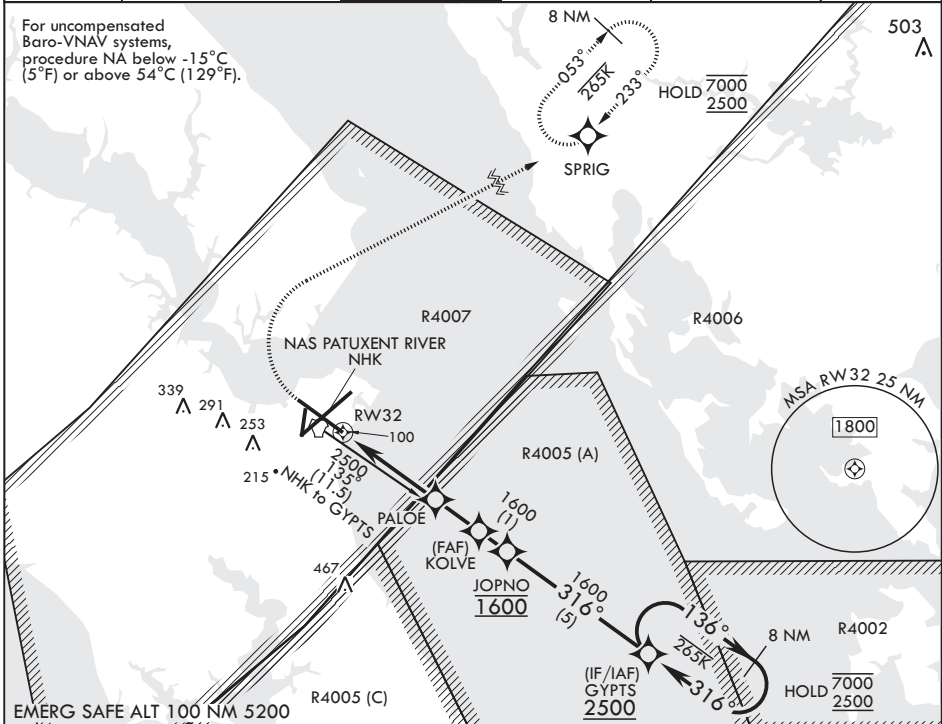
WAAS CH 66540 W32A	APCH CRS 316°	Rwy ldg TDZE Arpt Elev	9732 18 39
---------------------------------	-------------------------	------------------------------	---------------------------------------

(USN) PATUXENT RIVER NAS (TRAPNELL FLD) (KNHK)

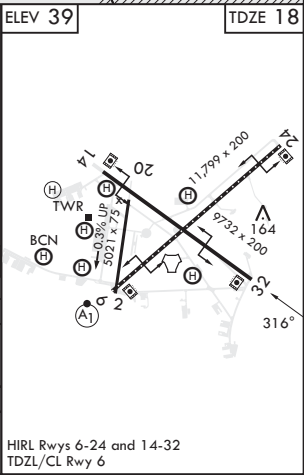
RNP APCH-GPS	MISSED APPROACH: Climb to 600, then climbing right turn to 2500 direct SPRIG and hold.
--------------	--

ATIS 322.425	APP CON/DEP CON* 121.0 250.3	TOWER 123.7 343.65	GND CON 120.6 336.4	CLNC DEL 135.2 316.125	ASR/PAR
------------------------	--	------------------------------	-------------------------------	----------------------------------	---------

For uncompensated Baro-VNAV systems, procedure NA below -15°C (5°F) or above 54°C (129°F).



CATEGORY	A	B	C	D	E
LPV DA	221- ³ / ₄		203	(200- ³ / ₄)	
LNAV/VNAV DA	295- ⁷ / ₈ 277 (300- ⁷ / ₈)	306- ⁷ / ₈ 288 (300- ⁷ / ₈)	314- ⁷ / ₈ 296 (300- ⁷ / ₈)	325- ⁷ / ₈	307 (300- ⁷ / ₈)
LNAV MDA	420-1	402 (400-1)	420-1 ¹ / ₈	402	(400-1 ¹ / ₈)
CIRCLING	520-1 481 (500-1)	560-1 521 (600-1)	620-1 ¹ / ₂ 581 (600-1 ¹ / ₂)	700-2 661 (700-2)	820-2 ³ / ₄ 781 (800-2 ³ / ₄)



PATUXENT RIVER, MARYLAND
Amdt 5 07AUG25

38°17'N - 76°25'W PATUXENT RIVER NAS (TRAPNELL FLD) (KNHK)

RNAV (GPS) RWY 32

NE-3, 14 MAY 2026 to 11 JUN 2026

NE-3, 14 MAY 2026 to 11 JUN 2026