

PATUXENT RIVER, MARYLAND

# RNAV (GPS) RWY 6

WAAS CH 54738 W06A	APCH CRS 059°	Rwy ldg 11,799	TDZE 39
		Arprt Elev 39	

(USN)

PATUXENT RIVER NAS (TRAPNELL FLD) (KNHK)

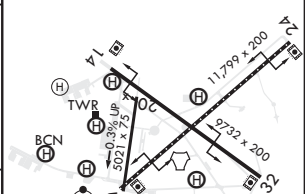
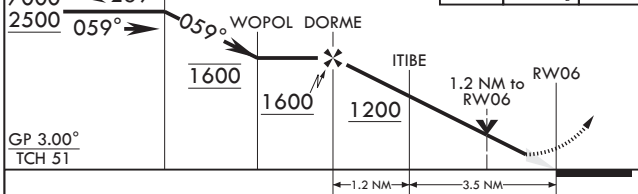
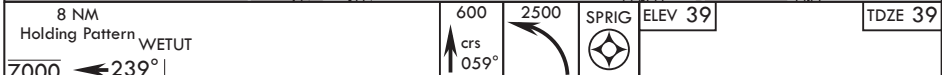
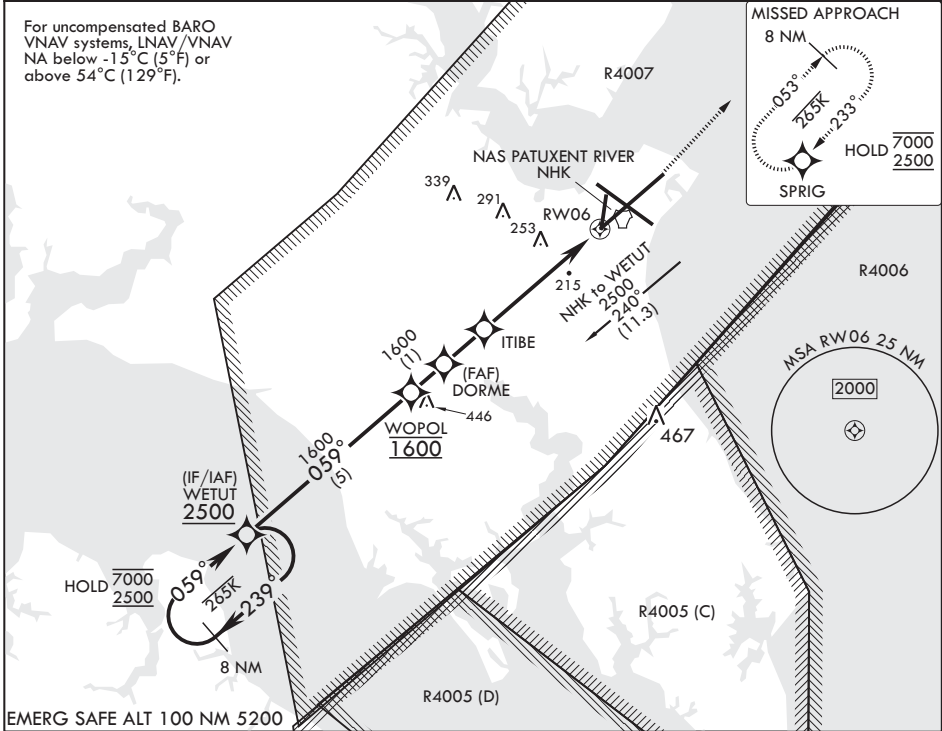
RNP APCH-GPS

- \* When ALS inop, increase vis to 3/4 mile.
- \*\* When ALS inop, increase vis to 1 3/8 miles.
- \*\*\* When ALS inop, increase CAT AB vis to 1 mile, CAT CDE vis to 1 3/8 miles.



MISSED APPROACH: Climb to 600 then climbing left turn to 2500 direct SPRIG and hold.

ATIS 322.425	APP CON/DEP CON * 121.0 250.3	TOWER 123.7 343.65	GND CON 120.6 336.4	CLNC DEL 135.2 316.125	ASR/PAR
-----------------	----------------------------------	-----------------------	------------------------	---------------------------	---------



CATEGORY	A	B	C	D	E
LPV DA*	239-½		200	(200-½)	
LNAV/VNAV DA**	480-¾		441	(500-¾)	
LNAV MDA***	480-½	441 (500-½)	480-⅙	441 (500-⅙)	
CIRCLING	520-1	560-1	620-1½	700-2	820-2¾
	481 (500-1)	521 (600-1)	581 (600-1½)	661 (700-2)	781 (800-2¾)

HIRL Rwy 6-24 and 14-32 TDZL/CL Rwy 6

PATUXENT RIVER, MARYLAND

38°17'N - 76°25'W PATUXENT RIVER NAS (TRAPNELL FLD) (KNHK)

Amdt 4 07AUG25

# RNAV (GPS) RWY 6

NE-3, 14 MAY 2026 to 11 JUN 2026

NE-3, 14 MAY 2026 to 11 JUN 2026