

PATUXENT RIVER, MARYLAND

TACAN Z RWY 24

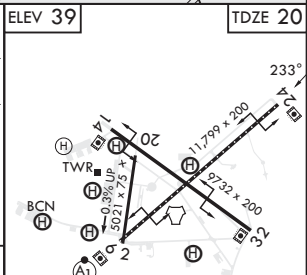
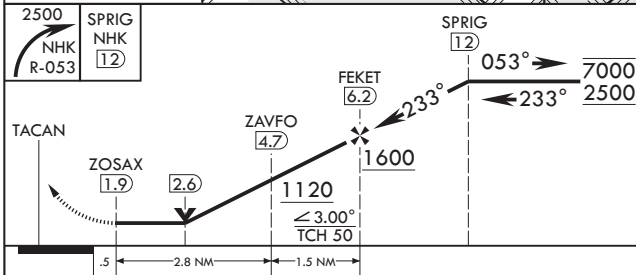
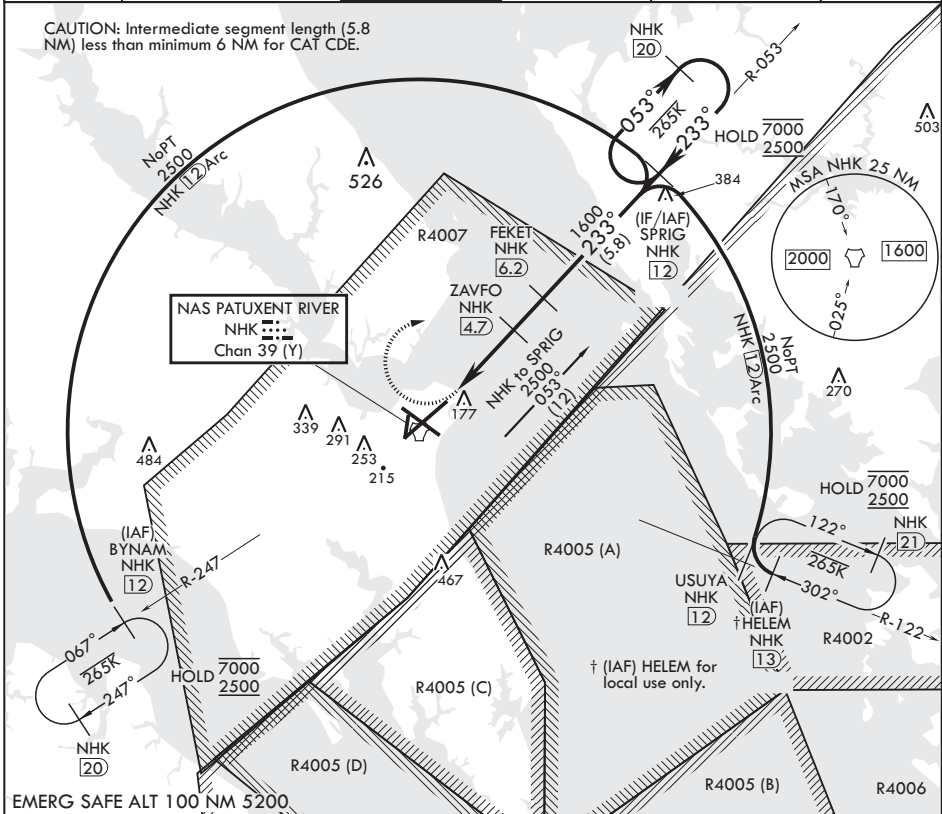
TACAN NHK Chan 39 (Y)	APCH CRS 233°	Rwy ldg TDZE 20	11,799
		Arprt Elev 39	

(USN) PATUXENT RIVER NAS (TRAPNELL FLD) (KNHK)

MISSED APPROACH: Climbing right turn to 2500 and intercept NHK TACAN R-053 to SPRIG and hold.

ATIS 322.425	APP CON/DEP CON* 121.0 250.3	TOWER 123.7 343.65	GND CON 120.6 336.4	CLNC DEL 135.2 316.125	ASR/PAR
--------------	------------------------------	--------------------	---------------------	------------------------	---------

CAUTION: Intermediate segment length (5.8 NM) less than minimum 6 NM for CAT CDE.



CATEGORY	A	B	C	D	E
S-24	440-1 420 (500-1)		440-1½ 420 (500-1½)		
CIRCLING	520-1 481 (500-1)	560-1 521 (600-1)	620-1½ 581 (600-1½)	700-2 661 (700-2)	820-2¾ 781 (800-2¾)

HIRL Rwy 6-24 and 14-32
TDZL/CL Rwy 6

PATUXENT RIVER, MARYLAND

38°17'N - 76°25'W PATUXENT RIVER NAS (TRAPNELL FLD) (KNHK)

Amdt 1 07AUG25

TACAN Z RWY 24

NE-3, 14 MAY 2026 to 11 JUN 2026

NE-3, 14 MAY 2026 to 11 JUN 2026