

PATUXENT RIVER, MARYLAND

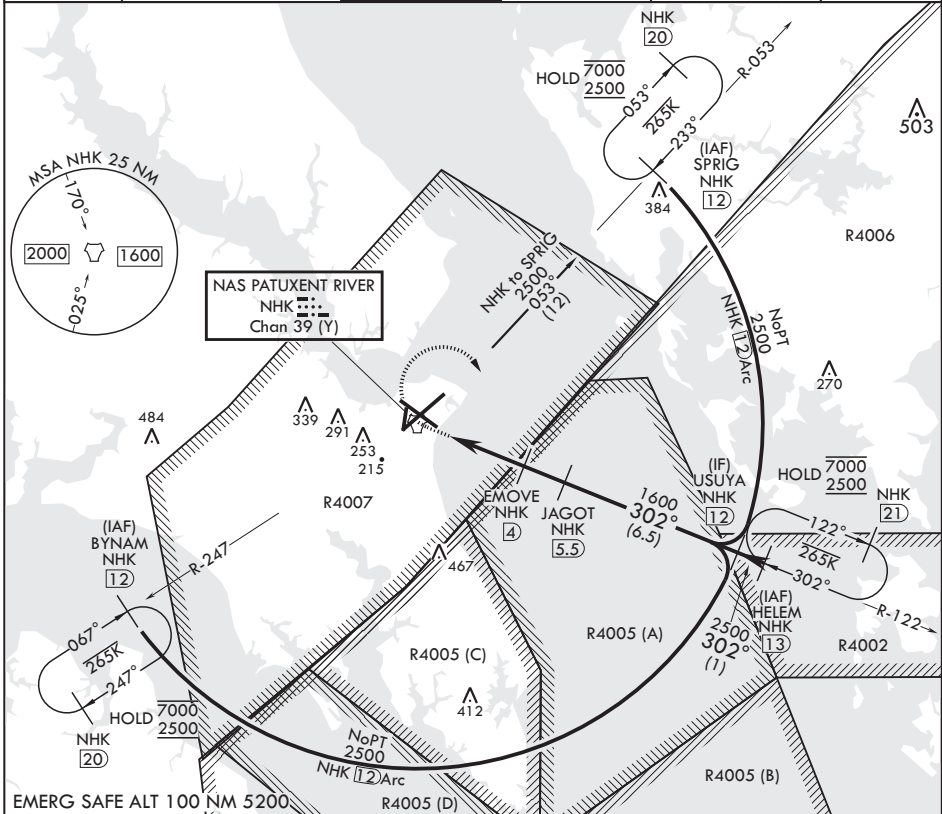
TACAN Z RWY 32

TACAN NHK Chan 39 (Y)	APCH CRS 302°	Rwy ldg TDZE Arpt Elev	9732 18 39
--------------------------	------------------	------------------------------	------------------

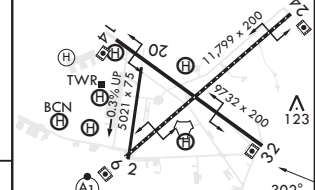
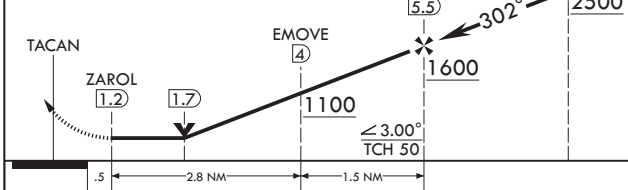
(USN) PATUXENT RIVER NAS (TRAPNELL FLD) (KNHK)

MISSED APPROACH: Climb to 500, then climbing right turn to 2500 on NHK TACAN R-122 to HELEM and hold.

ATIS 322.425	APP CON/DEP CON* 121.0 250.3	TOWER 123.7 343.65	GND CON 120.6 336.4	CLNC DEL 135.2 316.125	ASR/PAR
-----------------	---------------------------------	-----------------------	------------------------	---------------------------	---------



500	2500	HELEM NHK 13	USUYA NHK 12	ELEV 39	TDZE 18
-----	------	--------------------	--------------------	---------	---------



CATEGORY	A	B	C	D	E
S-32	380-1	362	(400-1)		
CIRCLING	520-1 481 (500-1)	560-1 521 (600-1)	620-1½ 581 (600-1½)	700-2 661 (700-2)	820-2¾ 781 (800-2¾)

HIRL Rwy 6-24 and 14-32
TDZL/CL Rwy 6

PATUXENT RIVER, MARYLAND 38°17'N - 76°25'W PATUXENT RIVER NAS (TRAPNELL FLD) (KNHK)

Amdt 1 07AUG25

TACAN Z RWY 32

NE-3, 14 MAY 2026 to 11 JUN 2026

NE-3, 14 MAY 2026 to 11 JUN 2026