

PATUXENT RIVER, MARYLAND

TACAN Z RWY 6

TACAN NHK Chan 39 (Y)	APCH CRS 067°	Rwy ldg TDZE Arprt Elev	11,799 39 39
-----------------------	---------------	-------------------------	--------------------

(USN)

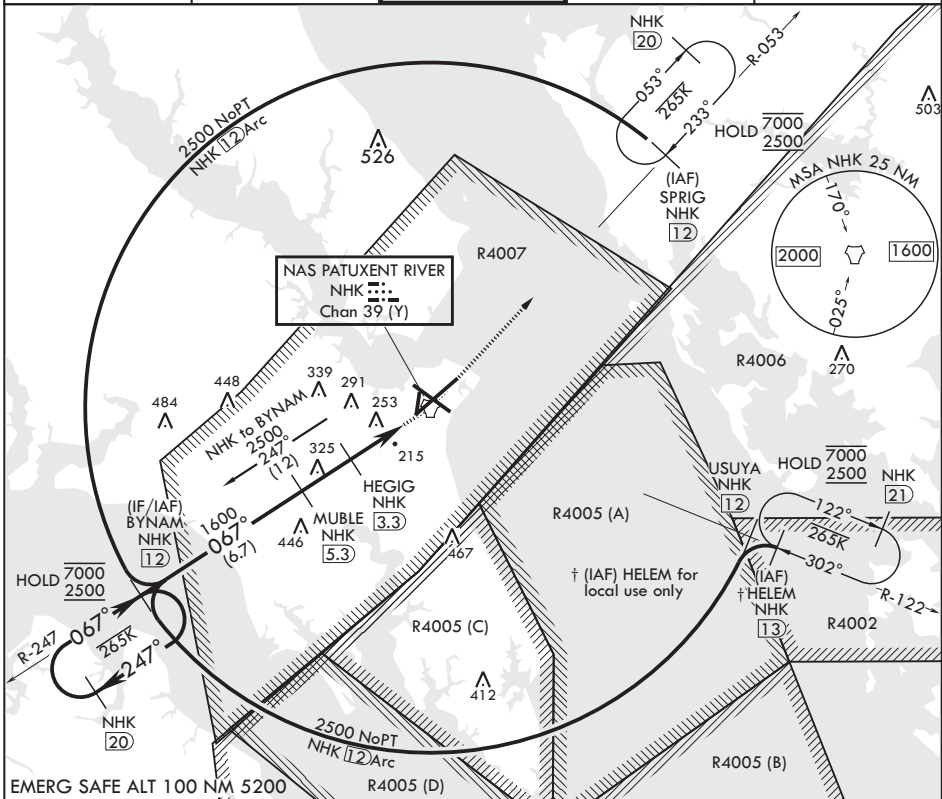
PATUXENT RIVER NAS (TRAPNELL FLD) (KNHK)

▼ * When ALS inop, increase CAT AB vis to 1 mile, CAT CDE vis to 1 3/8 miles.

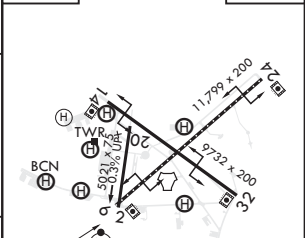
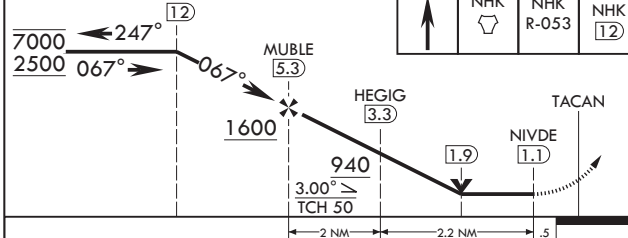


MISSED APPROACH: Climb to 2500 direct NHK TACAN and intercept NHK R-053 to SPRIG and hold.

ATIS 322.425	APP CON/DEP CON* 121.0 250.3	TOWER 123.7 343.65	GND CON 120.6 336.4	CLNC DEL 135.2 316.125
-----------------	---------------------------------	-----------------------	------------------------	---------------------------



BYNAM NHK 12	2500	NHK	NHK R-053	SPRIG NHK 12	ELEV 39	TDZE 39
--------------	------	-----	-----------	--------------	---------	---------



CATEGORY	A	B	C	D	E
S-6*	520-1/2 481 (500-1/2)	520-1 481 (500-1)	520-1 481 (500-1)	520-1 481 (500-1)	520-1 481 (500-1)
CIRCLING	520-1 481 (500-1)	560-1 521 (600-1)	620-1 1/2 581 (600-1 1/2)	700-2 661 (700-2)	820-2 3/4 781 (800-2 3/4)

HIRL Rwy 6-24 and 14-32 TDZL/CL Rwy 6

PATUXENT RIVER, MARYLAND

38°17'N - 76°25'W PATUXENT RIVER NAS (TRAPNELL FLD) (KNHK)

Amdt 1 07AUG25

TACAN Z RWY 6

NE-3, 14 MAY 2026 to 11 JUN 2026

NE-3, 14 MAY 2026 to 11 JUN 2026