

|  |                        |   |
|--|------------------------|---|
| WAAS<br>CH <b>82712</b><br><b>W11A</b> | APP CRS<br><b>112°</b> | Rwy Ldg <b>4808</b><br>TDZE <b>1487</b><br>Apt Elev <b>1497</b> |
|--|------------------------|---|

# RNAV (GPS) RWY 11

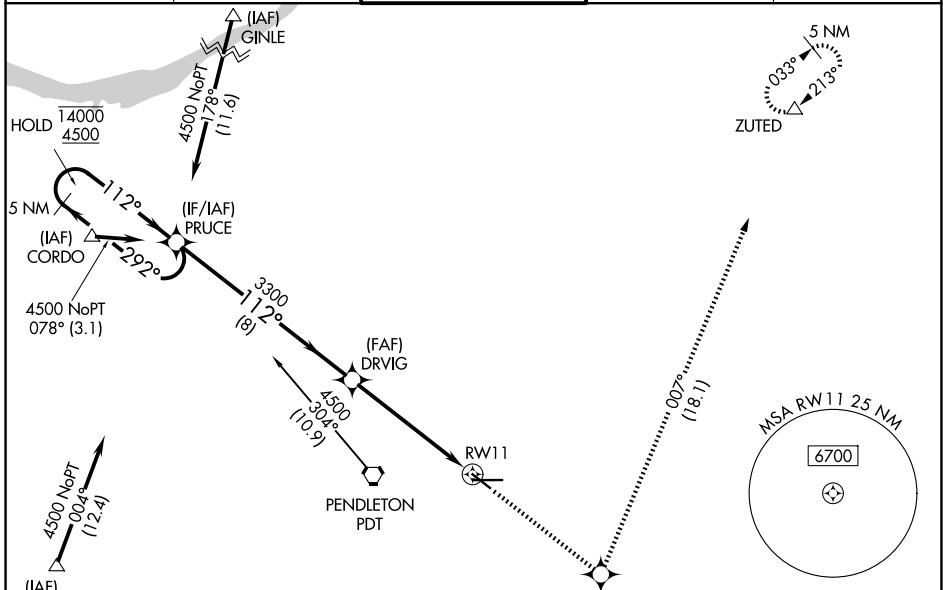
EASTERN OREGON RGNL AT PENDLETON (PDT)

RNP APCH.

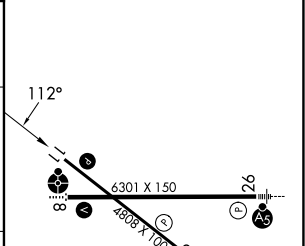
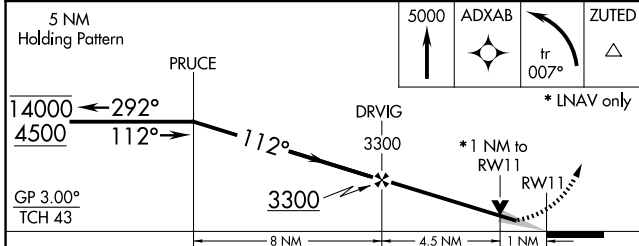
Baro-VNAV and VDP NA when using Walla Walla altimeter setting. For uncompensated Baro-VNAV systems, LNAV/VNAV NA below -17°C or above 54°C. When local altimeter setting not received, use Walla Walla altimeter setting and increase all DA/MDA 120 feet; VNAV all Cats visibility 1/8 SM, LNAV Cat C visibility 3/8 SM, and Cat D visibility 1/8 SM, Circling Cat C visibility 1/4 SM and Circling Cat D visibility 1/2 SM.

MISSED APPROACH: Climb to 5000 direct ADXAB and on track 007° to ZUTED and hold.

|                        |   |  |                               |                         |
|------------------------|---|--|-------------------------------|-------------------------|
| ASOS<br><b>118.325</b> | SPOKANE APP CON *<br><b>133.15 379.15</b> | PENDLETON TOWER *<br><b>119.7 (CTAF) 257.8</b> | GND CON<br><b>121.9 257.8</b> | UNICOM<br><b>122.95</b> |
|------------------------|---|--|-------------------------------|-------------------------|



|           |          |           |
|-----------|----------|-----------|
| ELEV 1497 | <b>D</b> | TDZE 1487 |
|-----------|----------|-----------|



| CATEGORY     | A                     | B                     | C                       | D                       |
|--------------|-----------------------|-----------------------|-------------------------|-------------------------|
| LPV DA       | 1737-1 250 (300-1)    |                       |                         |                         |
| LNAV/VNAV DA | 1850-1¼ 363 (400-1¼)  |                       |                         |                         |
| LNAV MDA     | 1860-1 373 (400-1)    |                       | 1860-1¼ 373 (400-1¼)    |                         |
| CIRCLING     | 1920-1<br>423 (500-1) | 1960-1<br>463 (500-1) | 1980-1½<br>483 (500-1½) | 2200-2¼<br>703 (800-2¼) |

REIL Rwy 11 and 29 **L**  
MIRL Rwy 11-29 **L**  
HIRL Rwy 8-26 **L**

NW-1, 14 MAY 2026 to 11 JUN 2026

NW-1, 14 MAY 2026 to 11 JUN 2026