

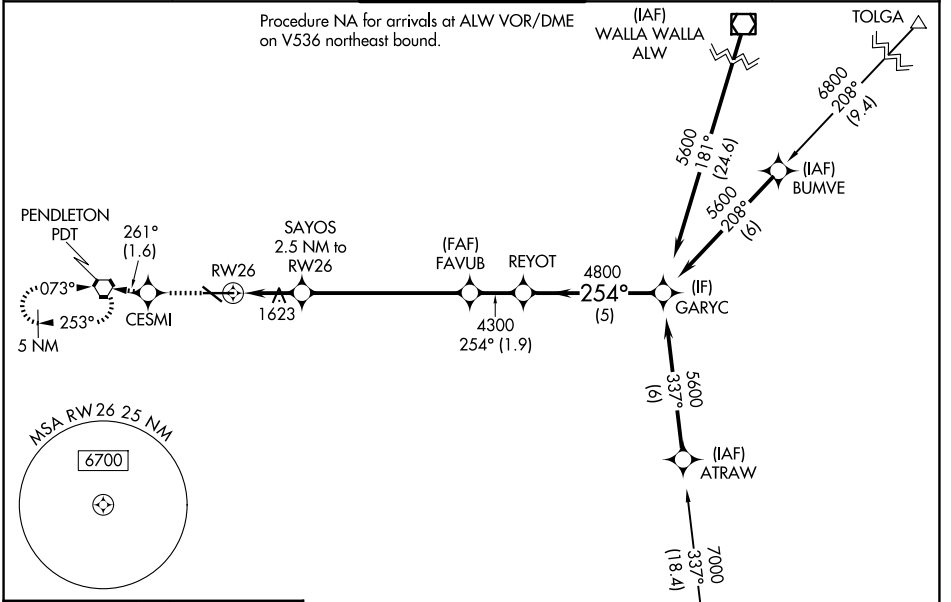
WAAS CH 78412 W26A	APP CRS 254°	Rwy Ldg TDZE Apt Elev	6301 1487 1497
---------------------------------	------------------------	-----------------------------	---

RNAV (GPS) RWY 26

EASTERN OREGON RGNL AT PENDLETON (PDT)

RNP APCH.	<p>⚠ Circling Rwy 11 NA at night. For uncompensated Baro-VNAV systems, LNAV/VNAV NA below -17°C or above 54°C. For inop ALS, increase LNAV/VNAV all Cats visibility to RVR 4500. #RVR 1800 authorized with the use of FD or AP or HUD to DA.</p>	MALSR 	MISSED APPROACH: Climb to 4300 direct CESMI and on track 261° to PDT VORTAC and hold, continue climb-in-hold to 4300.
-----------	---	-----------	---

ASOS 118.325	SPOKANE APP CON * 133.15 379.15	PENDLETON TOWER * 119.7 (CTAF) 257.8	GND CON 121.9 257.8	UNICOM 122.95
------------------------	---	--	-------------------------------	-------------------------

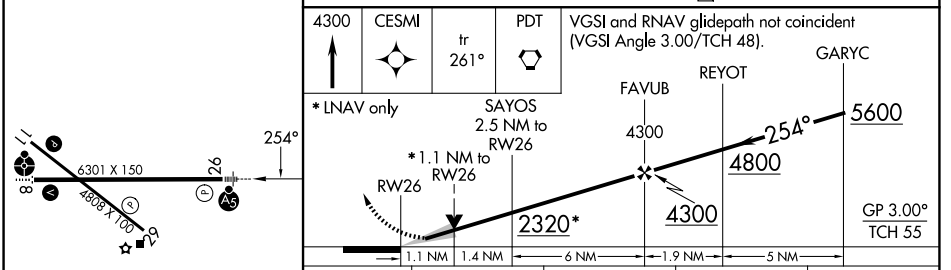


NW-1, 14 MAY 2026 to 11 JUN 2026

NW-1, 14 MAY 2026 to 11 JUN 2026

ELEV 1497	D	TDZE 1487
-----------	----------	-----------

Procedure NA for arrivals at LACED on V4 southeast bound.



CATEGORY	A	B	C	D
LPV DA#		1687/24	200 (200-½)	
LNAV/VNAV DA		1800/24	313 (400-½)	
LNAV MDA	1880/24	393 (400-½)	1880/40	393 (400-¾)
CIRCLING	1920-1 423 (500-1)	1960-1 463 (500-1)	1980-1½ 483 (500-1½)	2200-2¼ 703 (800-2¼)

- REIL Rwy 11 and 29 **Ⓛ**
- MIRL Rwy 11-29 **Ⓛ**
- HIRL Rwy 8-26 **Ⓛ**